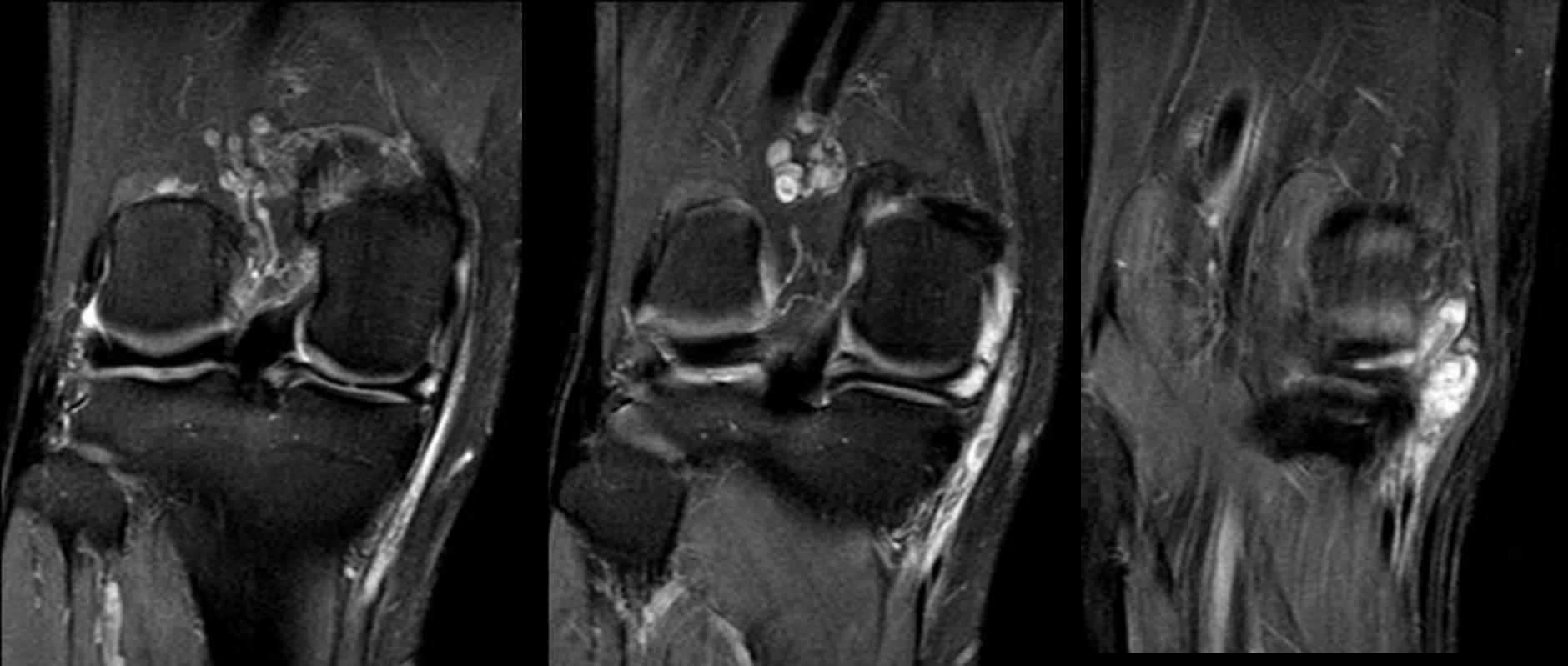
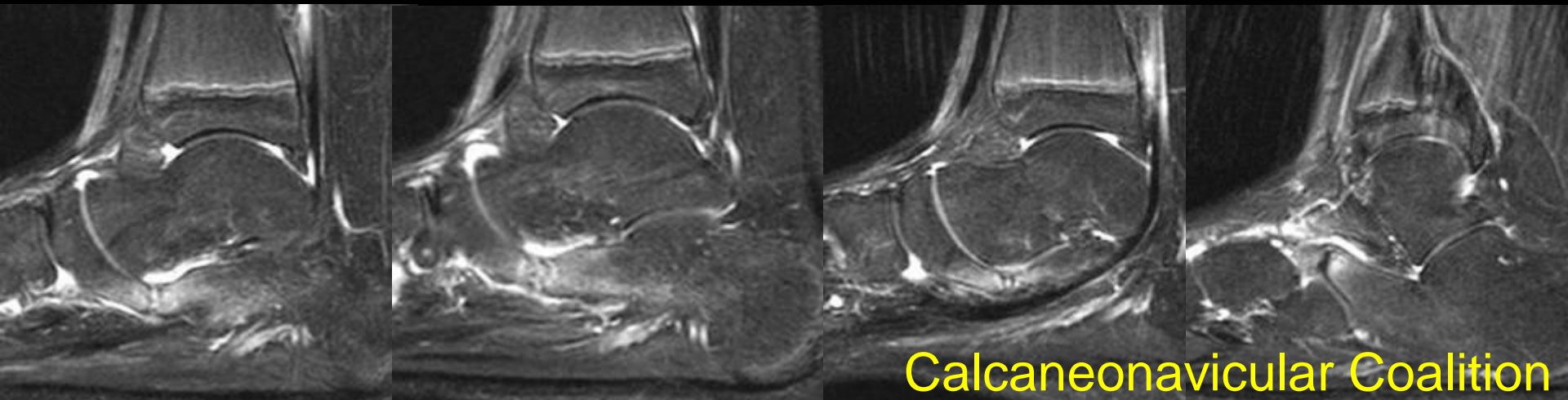
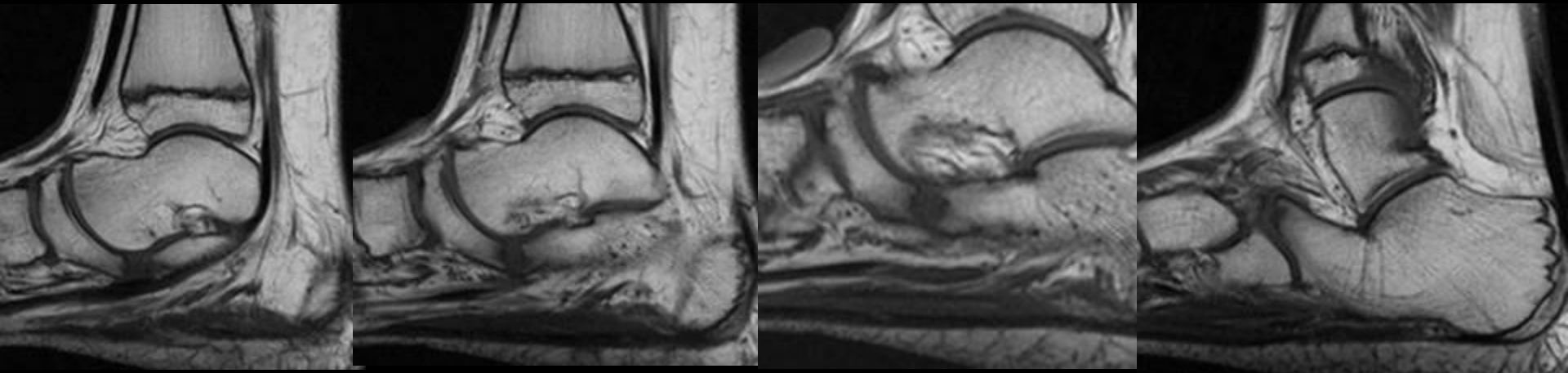

JULY 28, 2005

59 year old male with chronic right knee pain



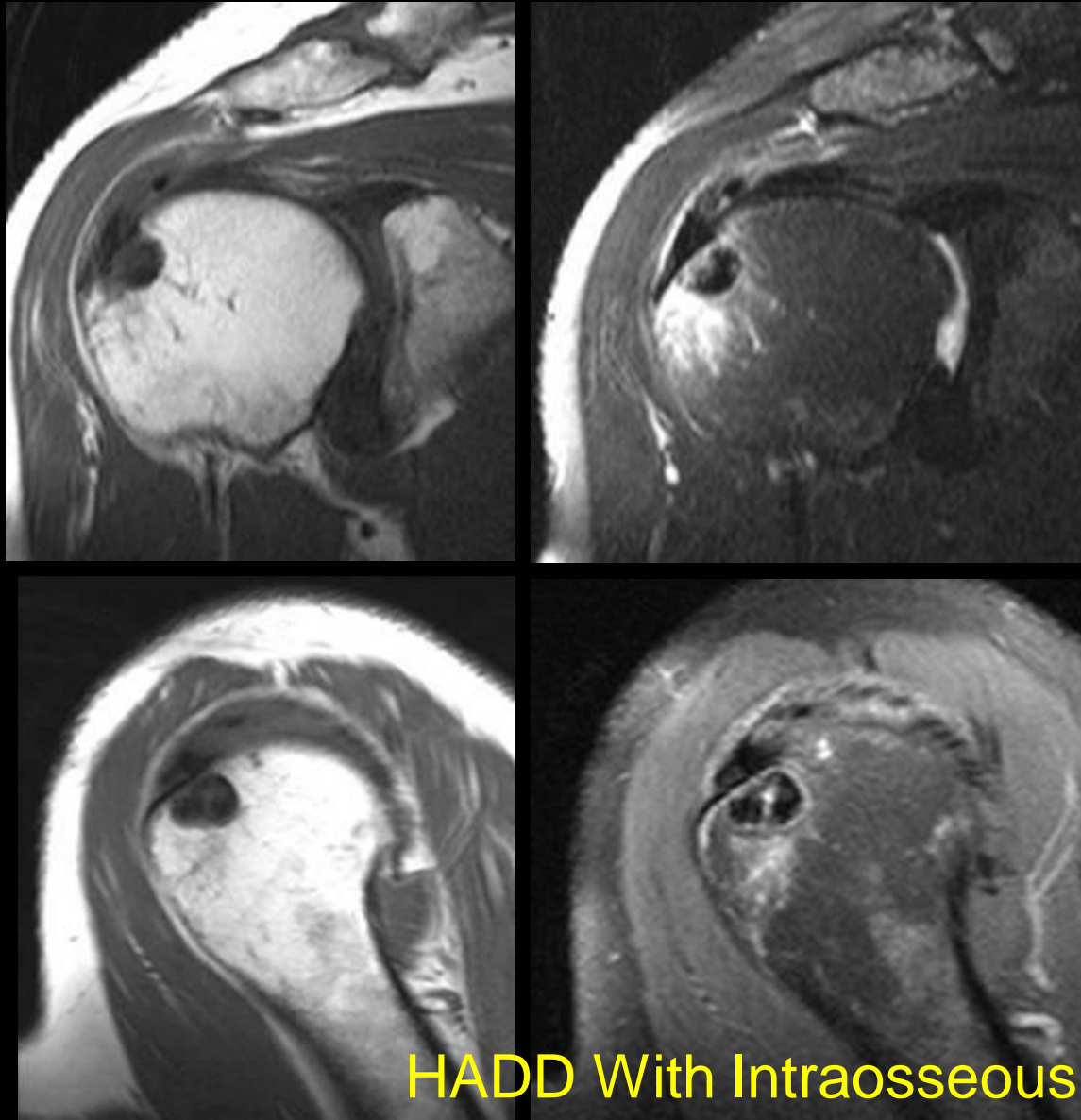
Meniscal Cyst

12 year old male with chronic foot pain



Calcaneonavicular Coalition

40 year old man - rule out rotator cuff tear

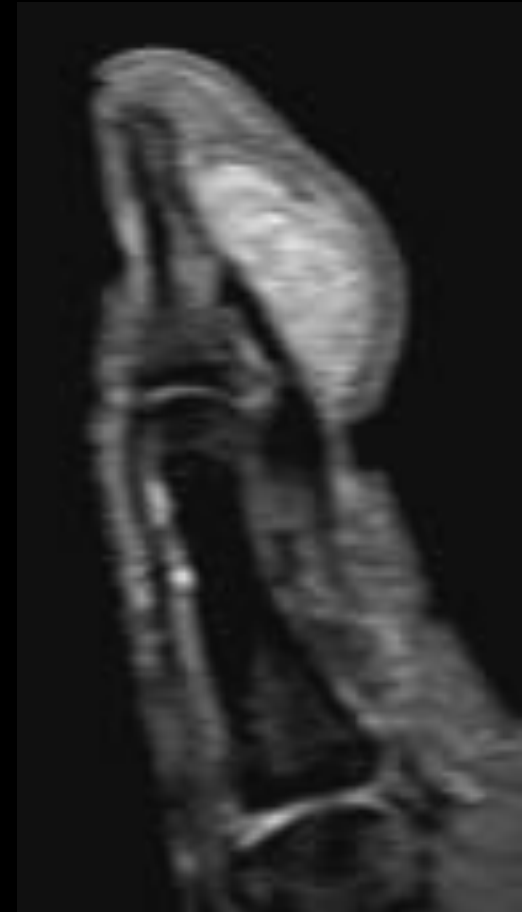


HADD With Intraosseous Penetration

36 year-old man



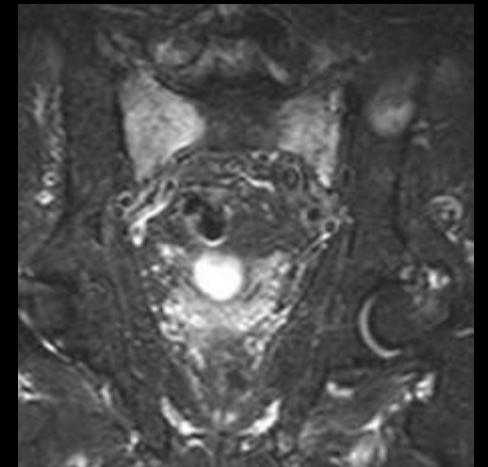
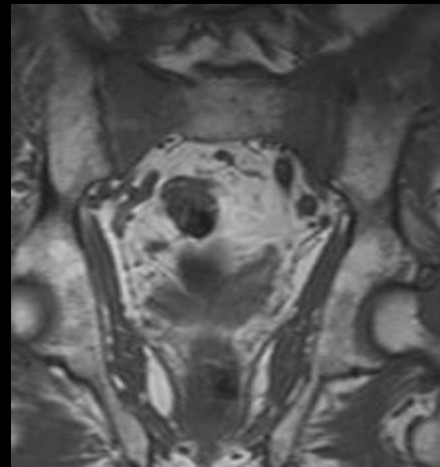
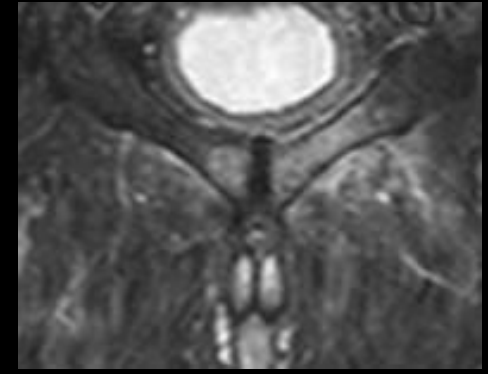
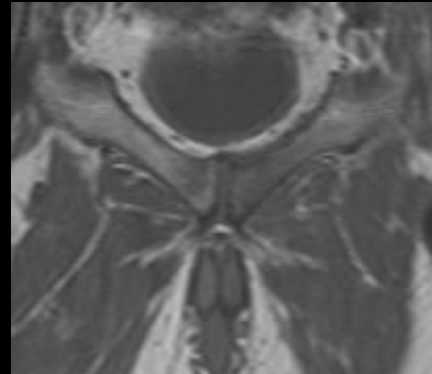
T1



PD FS FSE

? Giant Cell Tumor

84M LEFT HIP PAIN ? OCCULT STRESS FRACTURE, LEFT HIP

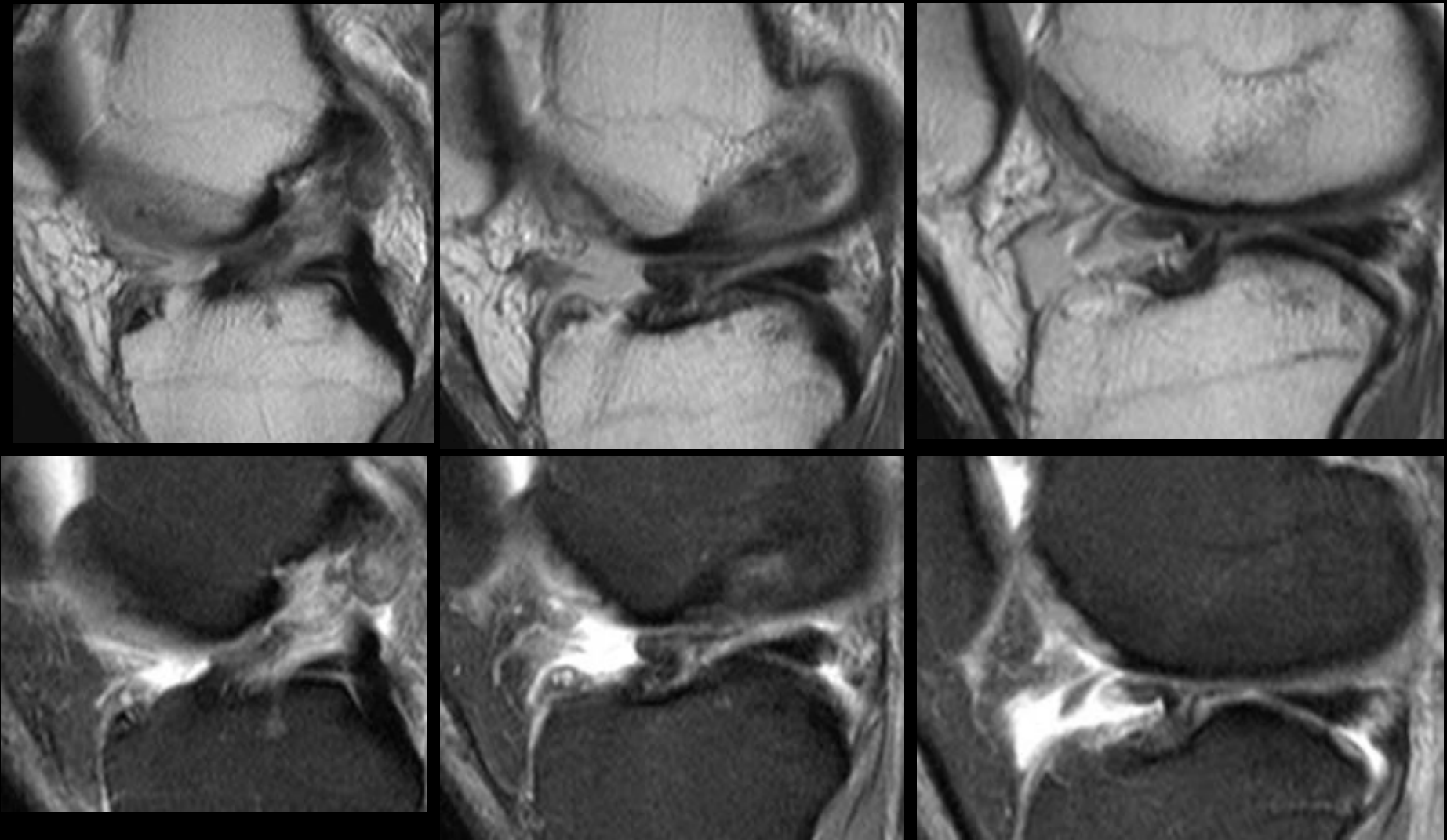


Ax T1

PDFS

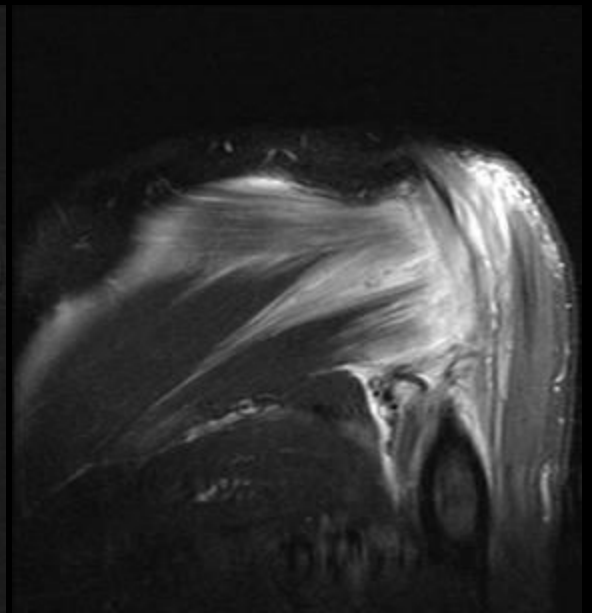
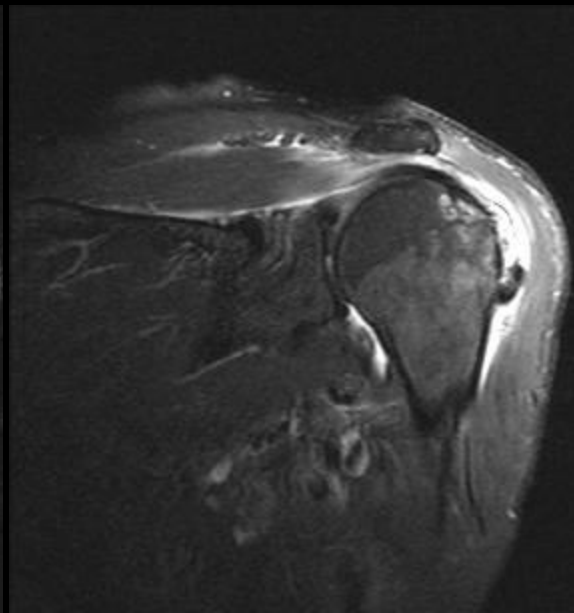
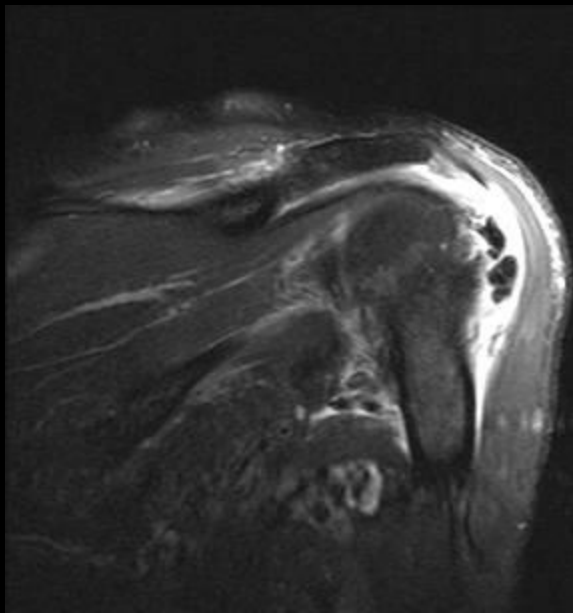
Insufficiency Fractures

47M Medial pain and popping. Tennis injury. Evaluation for medial meniscal tear



ACL Stump Entrapment

Adult man with shoulder pain



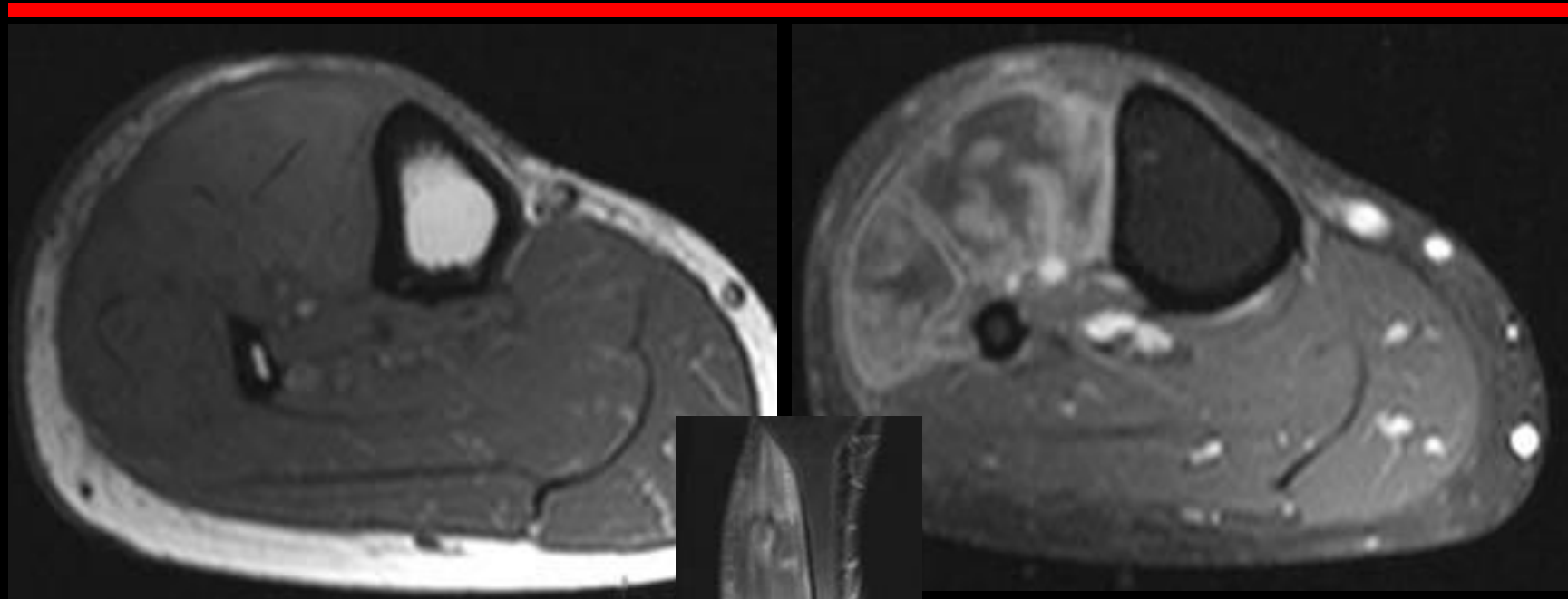
Elbow Injury



UCL Injury

33 y.o f s/p fall one month ago with immediate swelling and pain. XR neg at that time.

Now with foot drop and pain. No fever white count or erythema

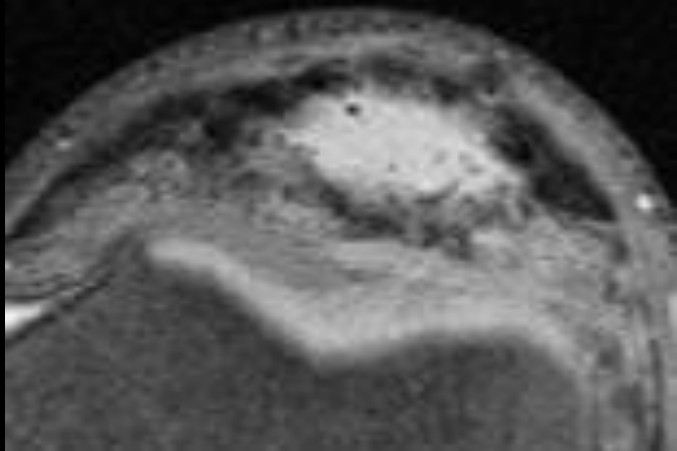
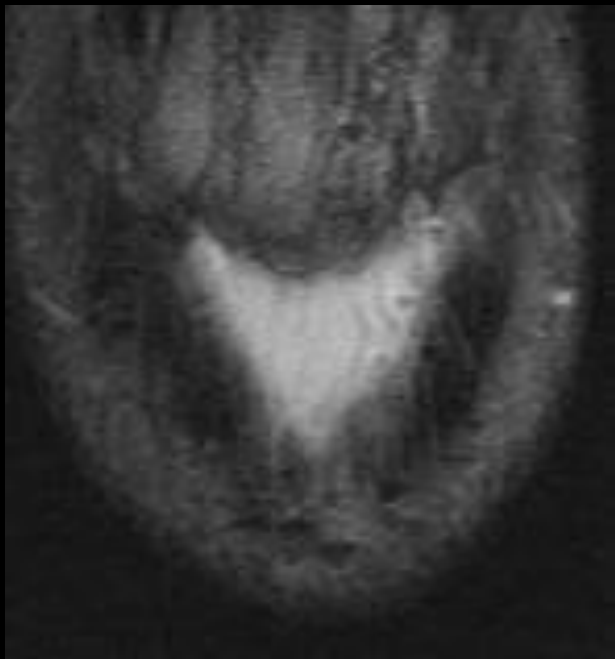


Ax T1

Ax T1 FS IV Gd

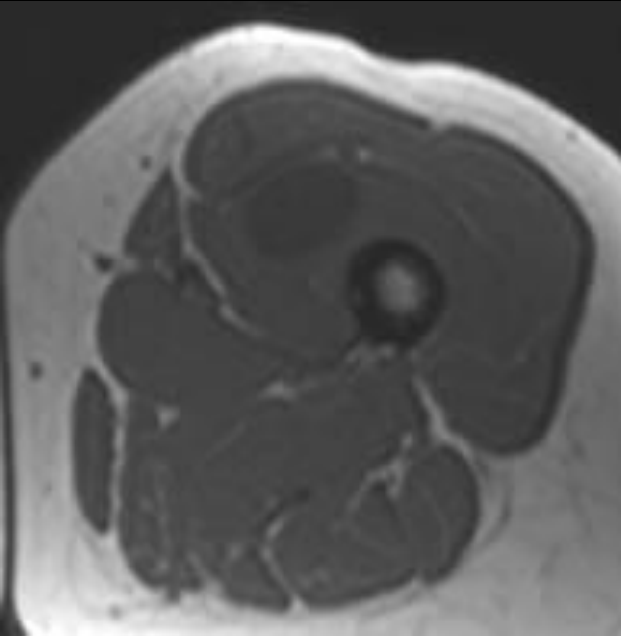
Cor STIR

Myonecrosis with Compartment Syndrome

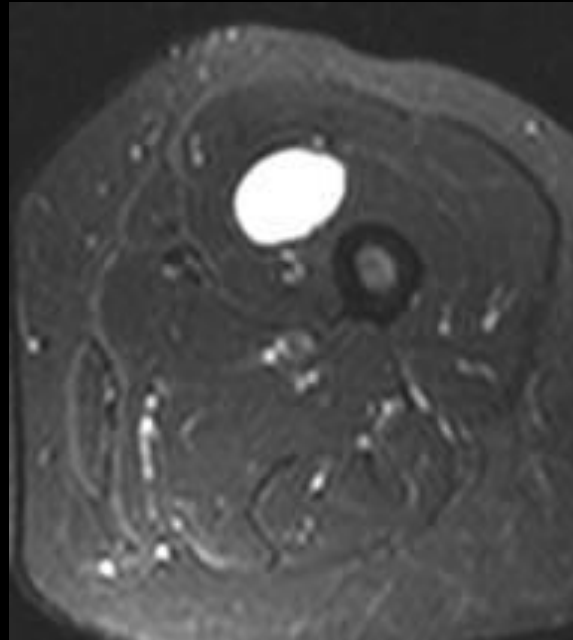


Patellar Tendon Tear

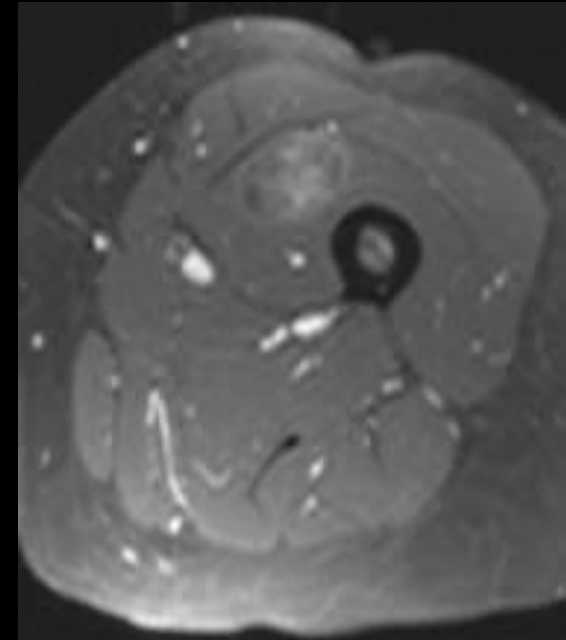
41F Left thigh mass



T1



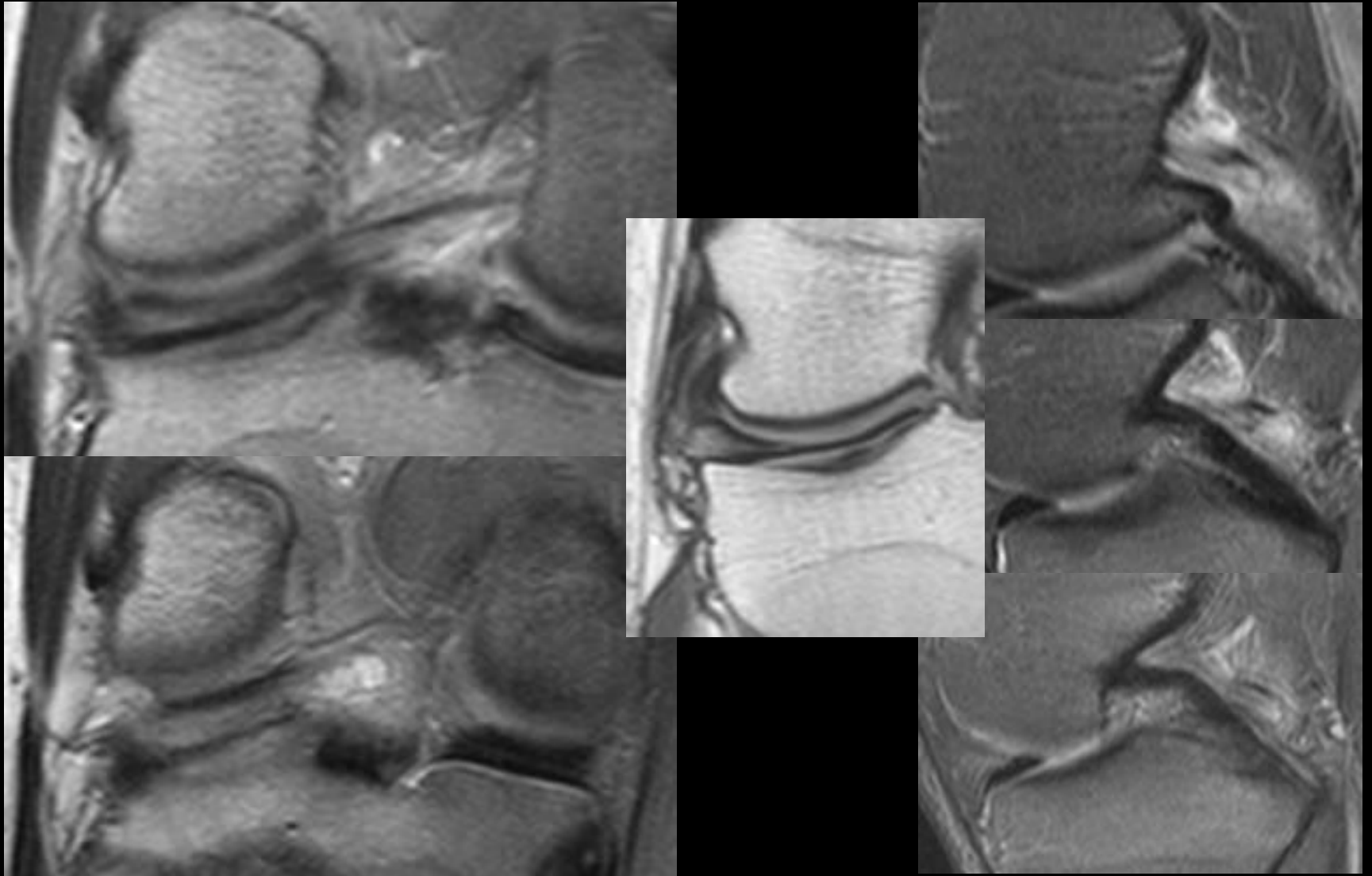
PDFS



T1 FS IV Gd

? Myxoma

33M



Torn Discoid Lateral Meniscus with Extension Into Lig of Wrisberg

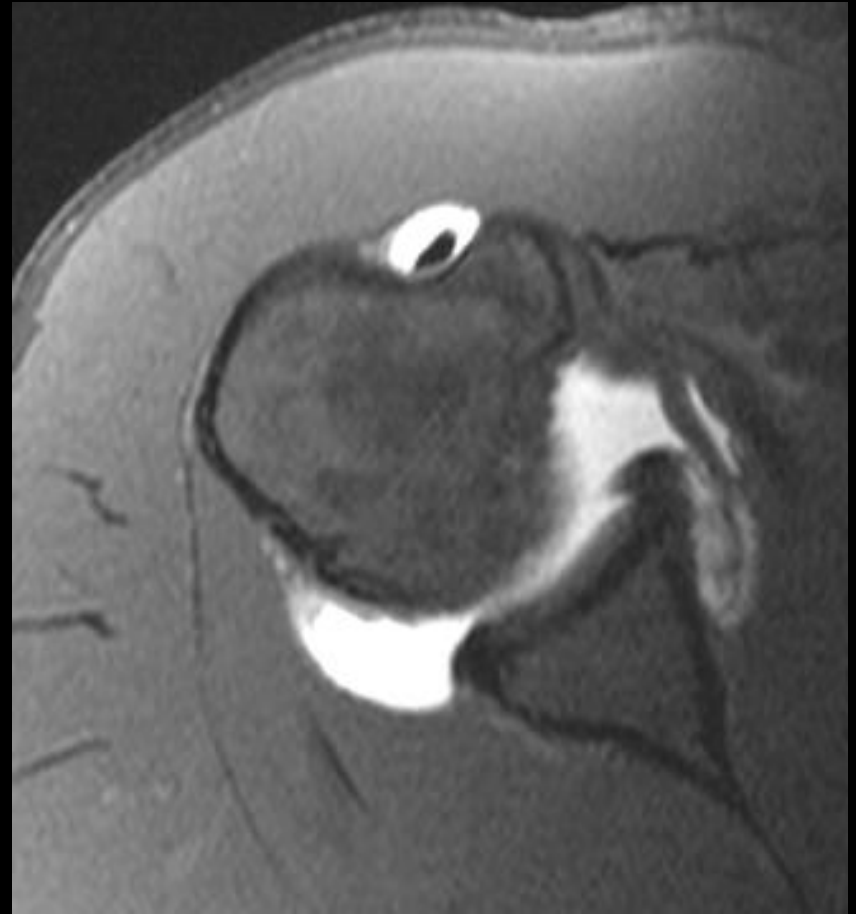
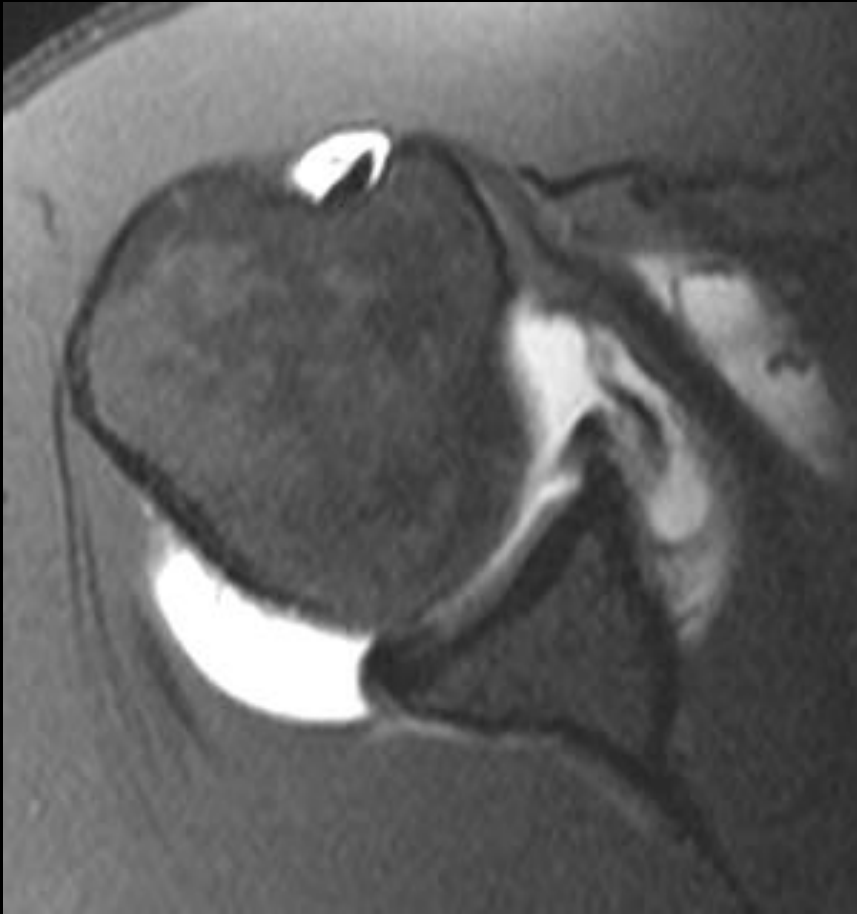
33M

- 1. Central cavitating tear of the entire lateral meniscus with extension to the anterior root ligament and to the ligament of Wrisberg. The ligament of Wrisberg has a bifid appearance and may be torn. There is an associated small ganglion cyst.
- 2. At least two meniscal cysts are seen associated with the lateral meniscal tear.
- 3. Posterior root ligament of the lateral meniscus is difficult to visualize and this raises possibility of a Wrisberg-type lateral meniscus.

Man with known condition



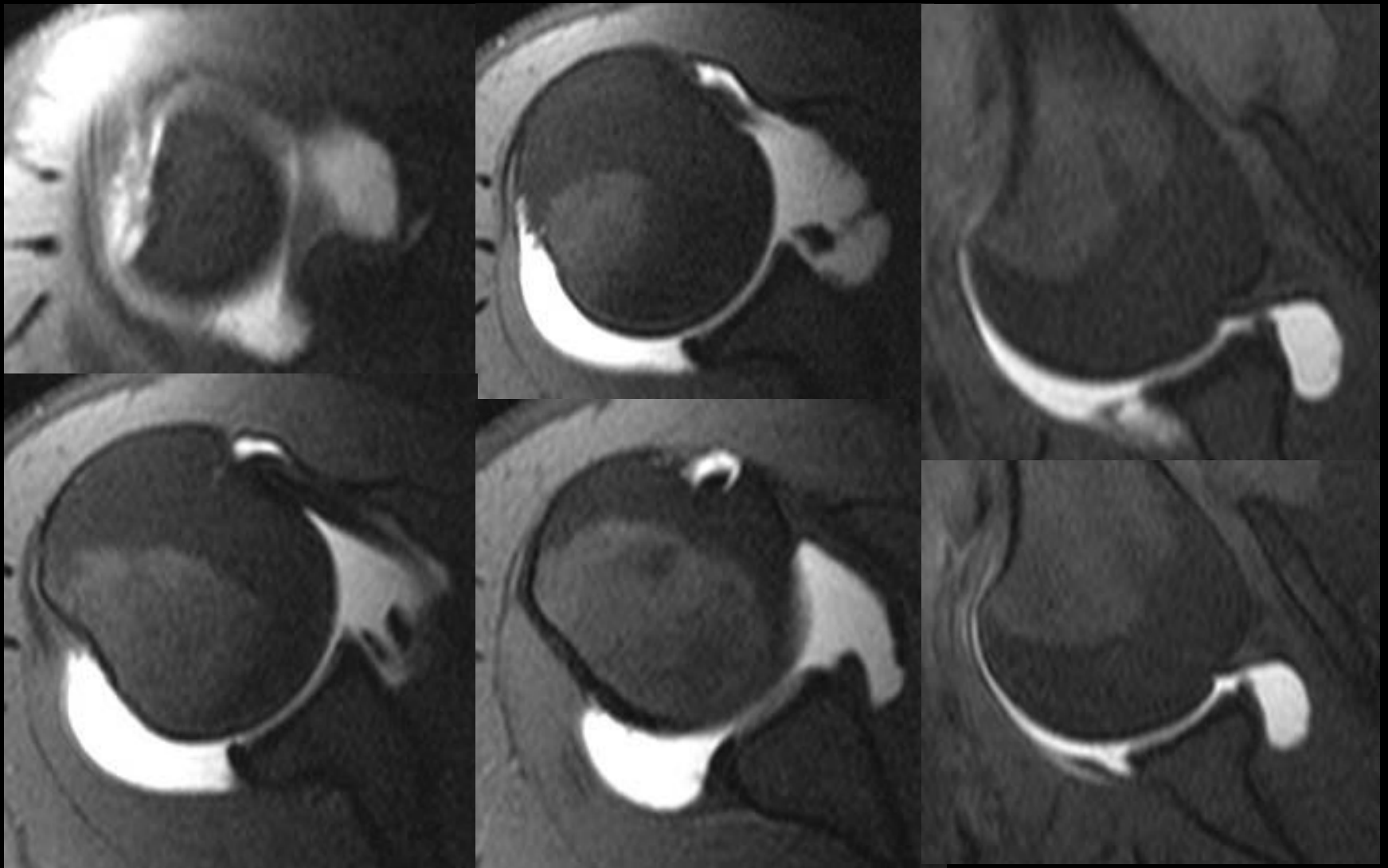
Man with multiple dislocations



ALPSA and GLAD Lesion

18 year old female with a history of right shoulder dislocation.

MRI arthrogram was performed.

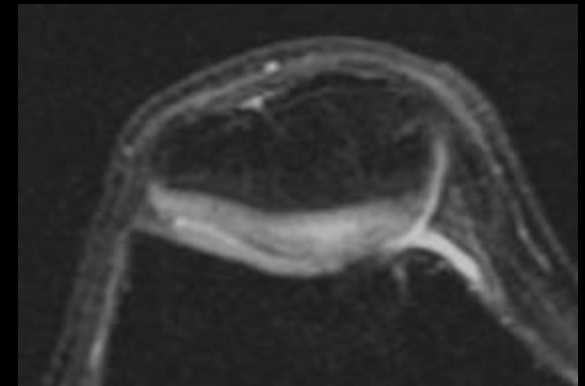
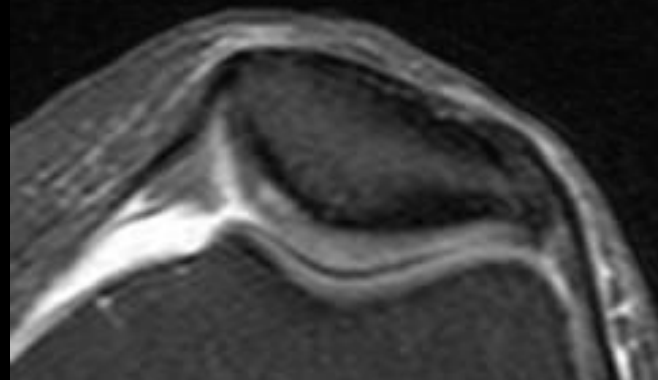
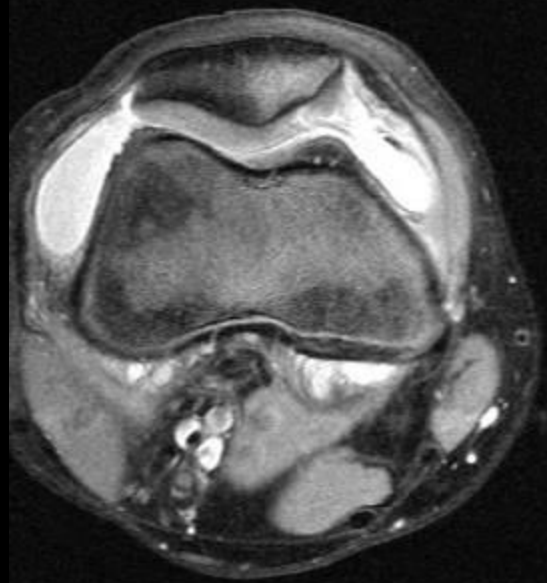


? SLAP V, Bankart, ALPSA, Perthes

73 year old presenting with hand pain



? Gout, CPPD disease, RA



Cartilage delamination