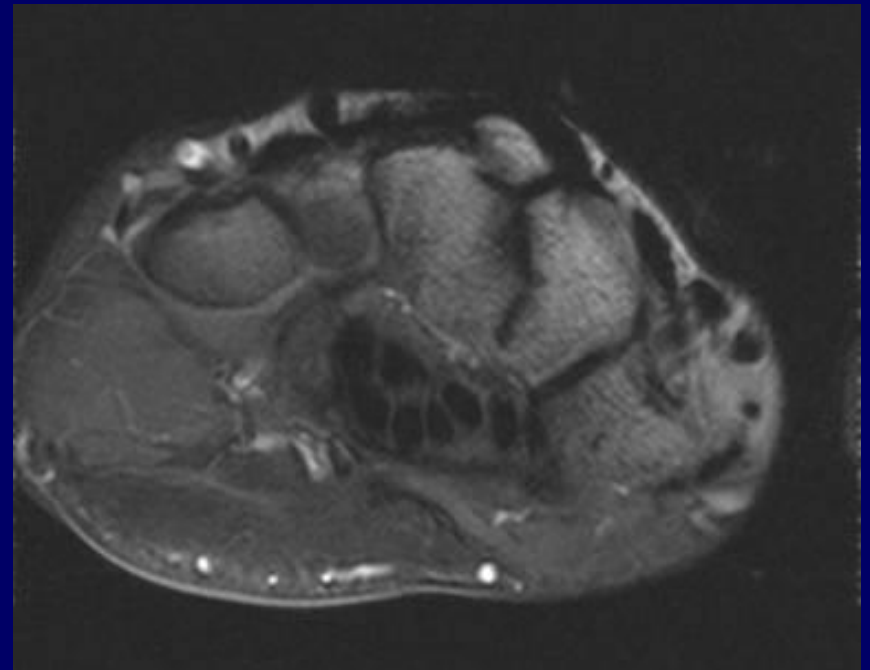
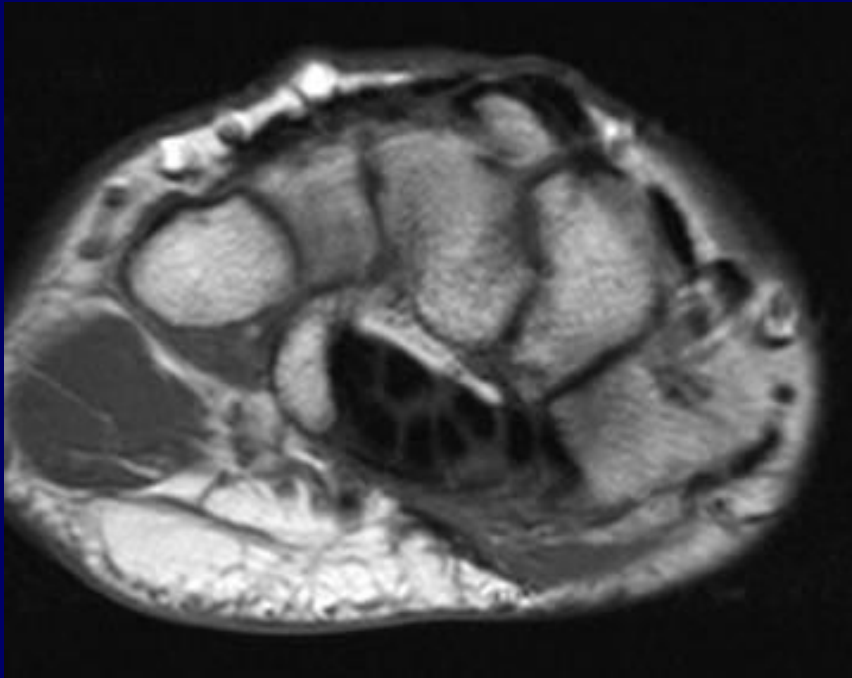


January 18, 2007

CASE

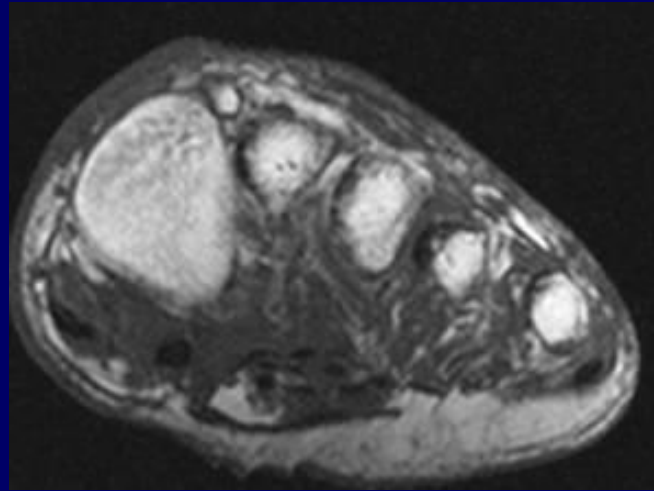
40 YEARS OLD PAIN IN HAND



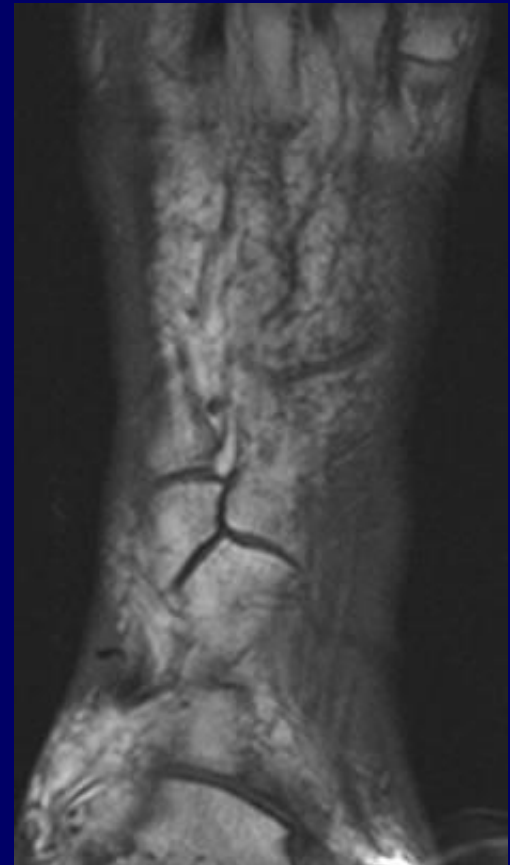
Carpal boss

CASE

91 YEARS OLD PAIN ON THE DORSAL
ASPECT OF FOOT



Os
intermetarseum



CASE

Navicular-cuneiform
coalition



CASE

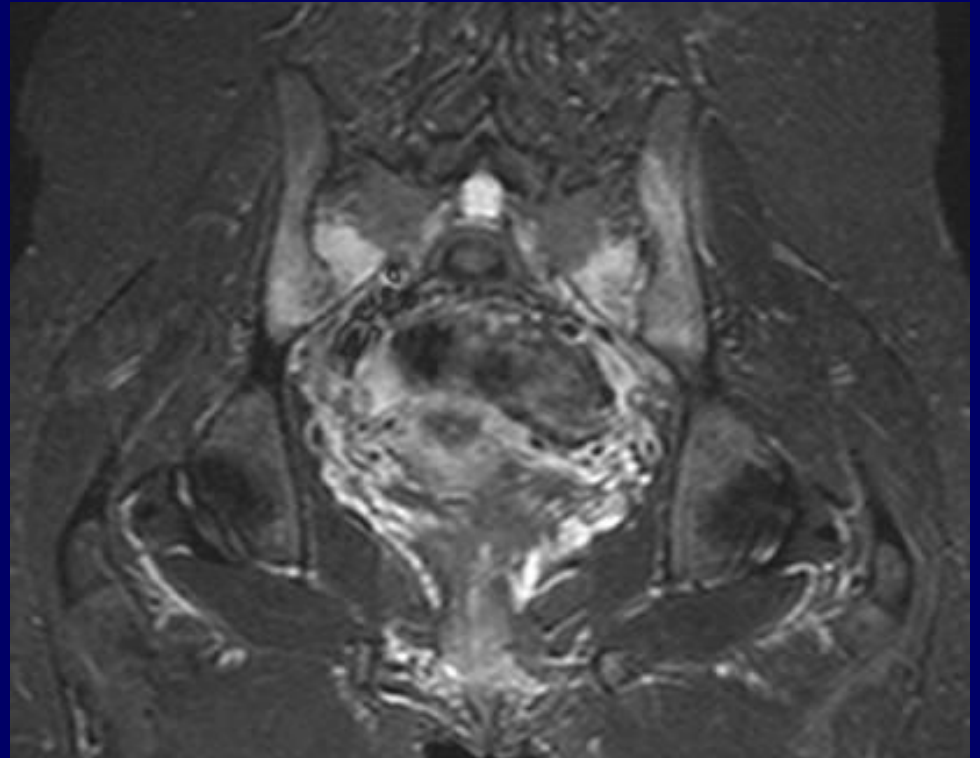
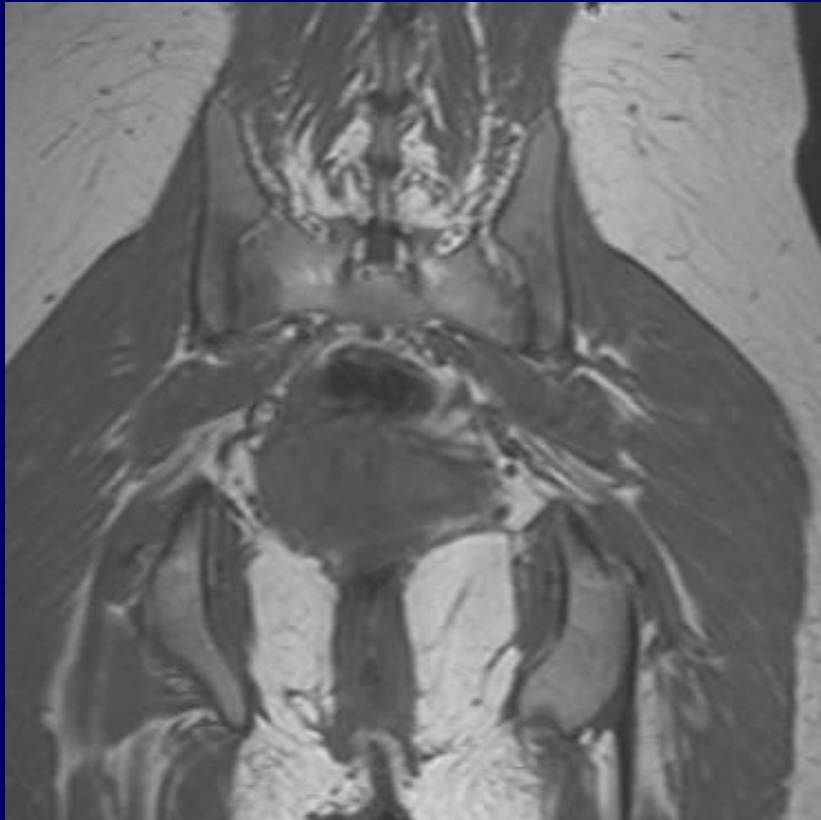
73 year old woman with knee pain



Insufficiency Fracture (SONC)

Case

- 29 yo female with h/o chronic lower back pain, r/o ankylosing spondylitis



Case

17 year old tennis player with medial elbow pain.
Subjective sensation of locking.



Prominent posterior synovial fringe.

CASE

Weightbearing foot radiographs in a patient with foot alignment abnormalities.

LEFT

RIGHT

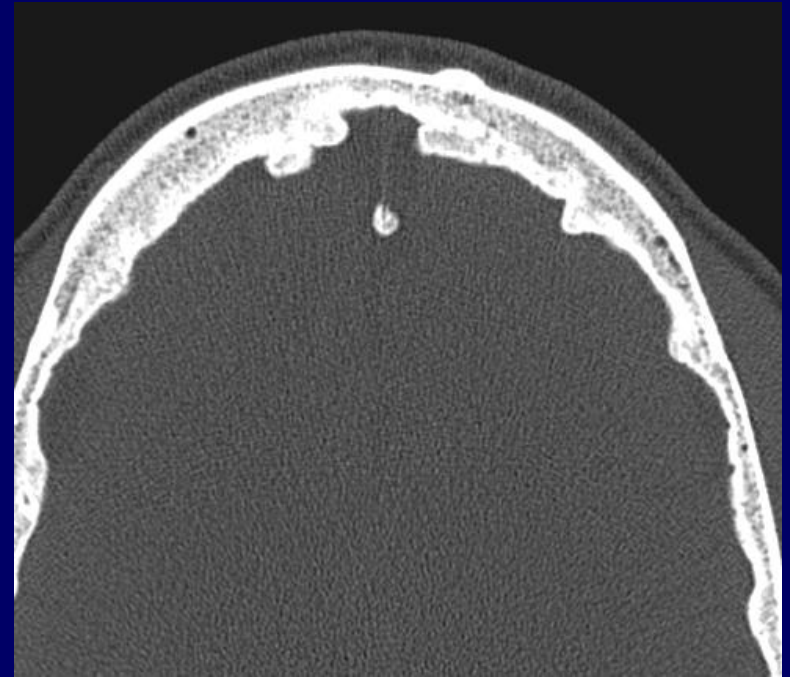
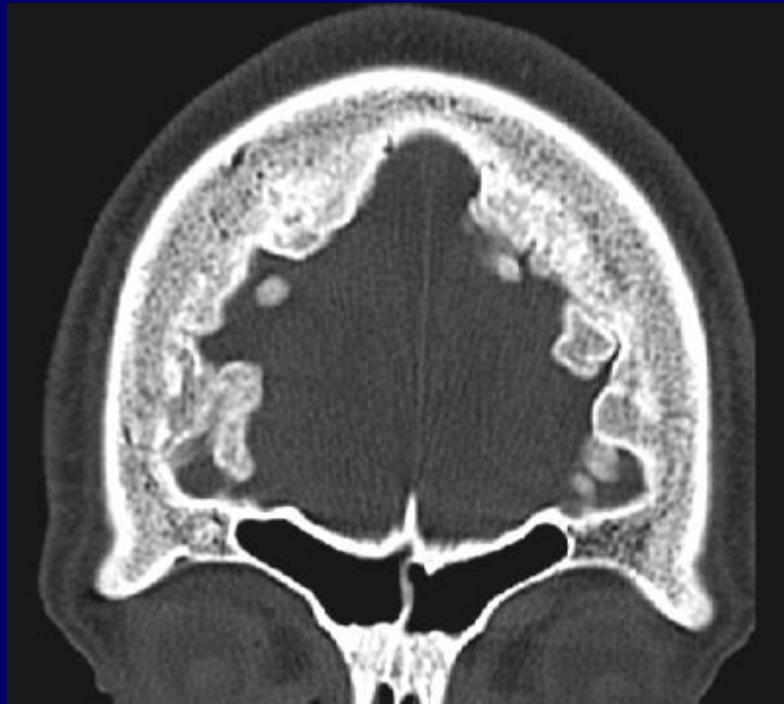


Metatarsus adductus with stress fractures

CASE

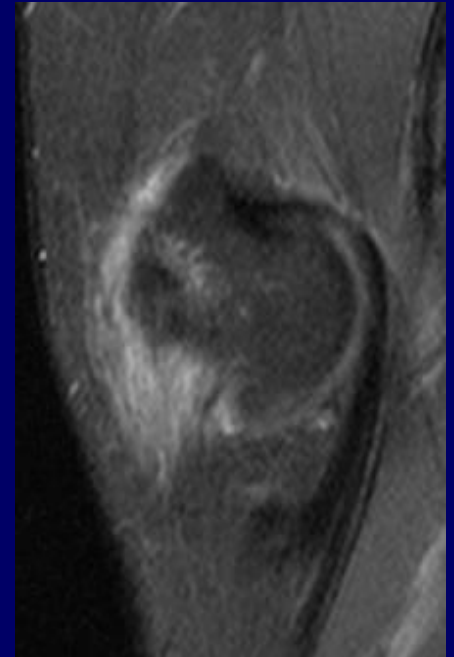
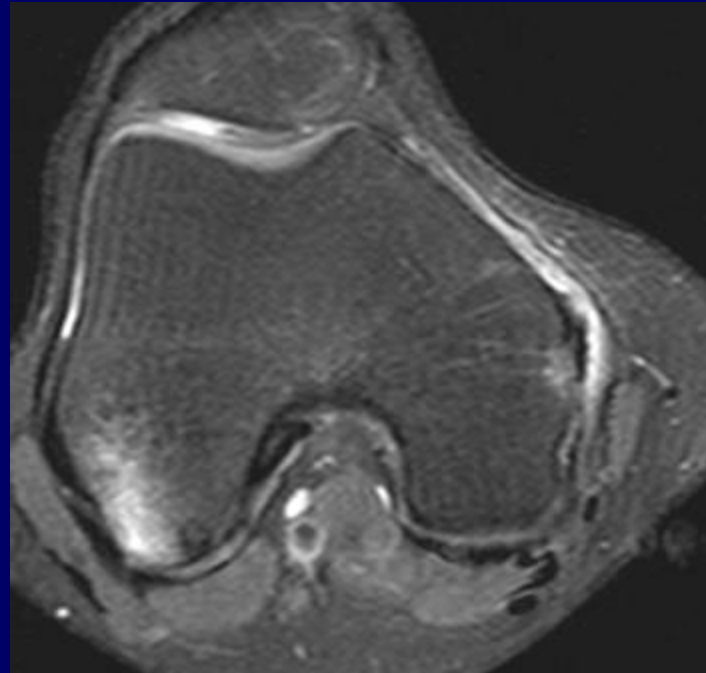


CASE



CASE

20 yr old ATV accident, medial knee pain

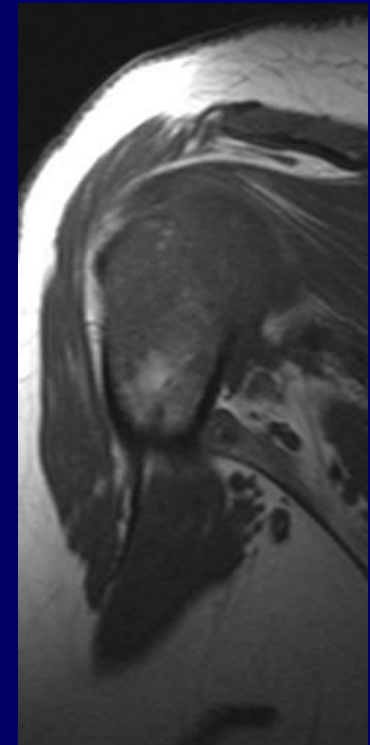
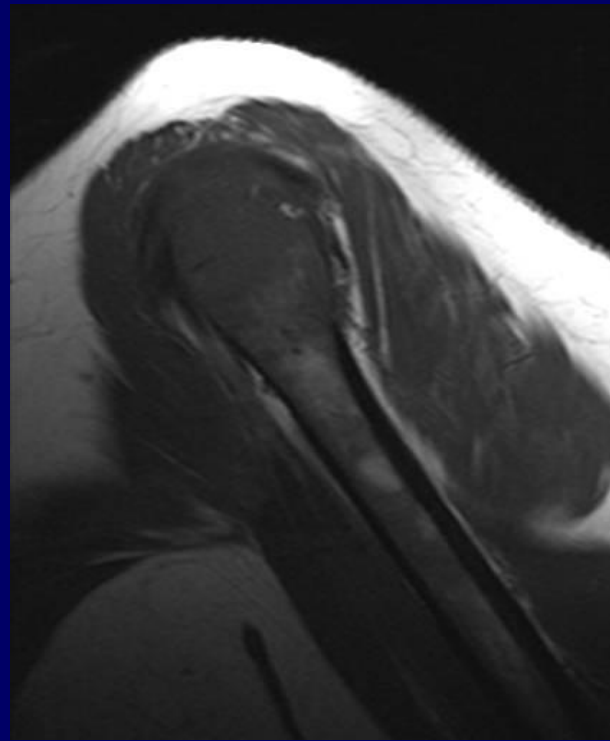
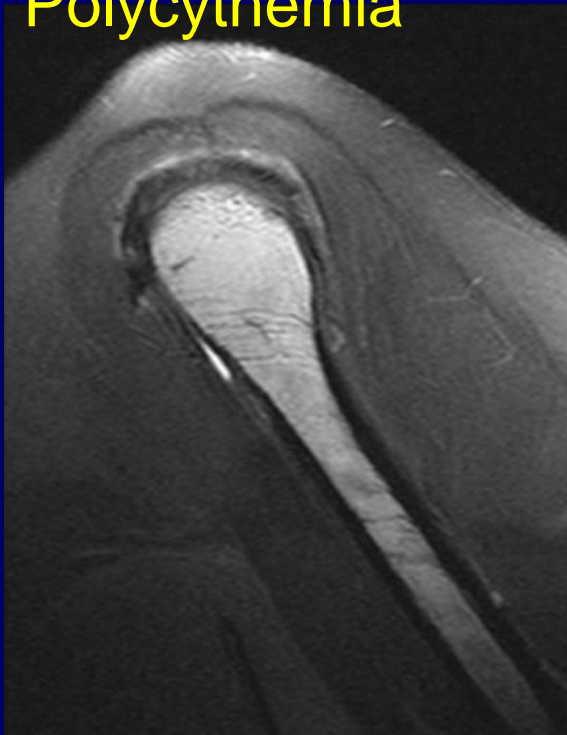


Pure valgus stress related to external blow to lateral aspect of the knee

CASE

75 year old female with right shoulder pain

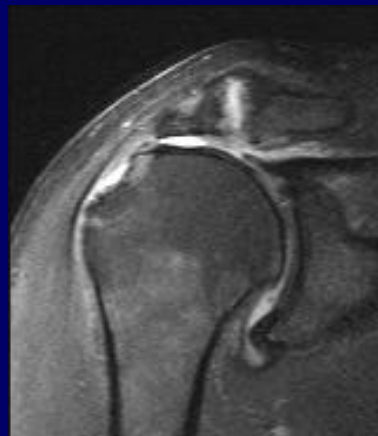
Polycythemia



CASE

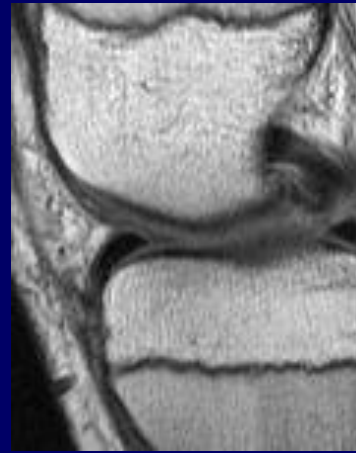
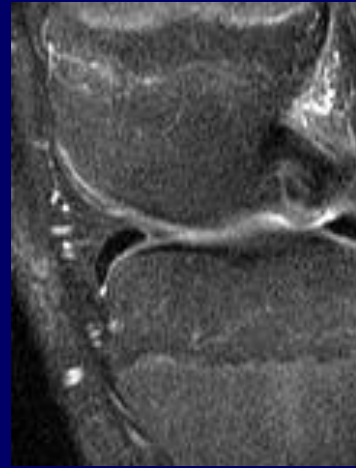
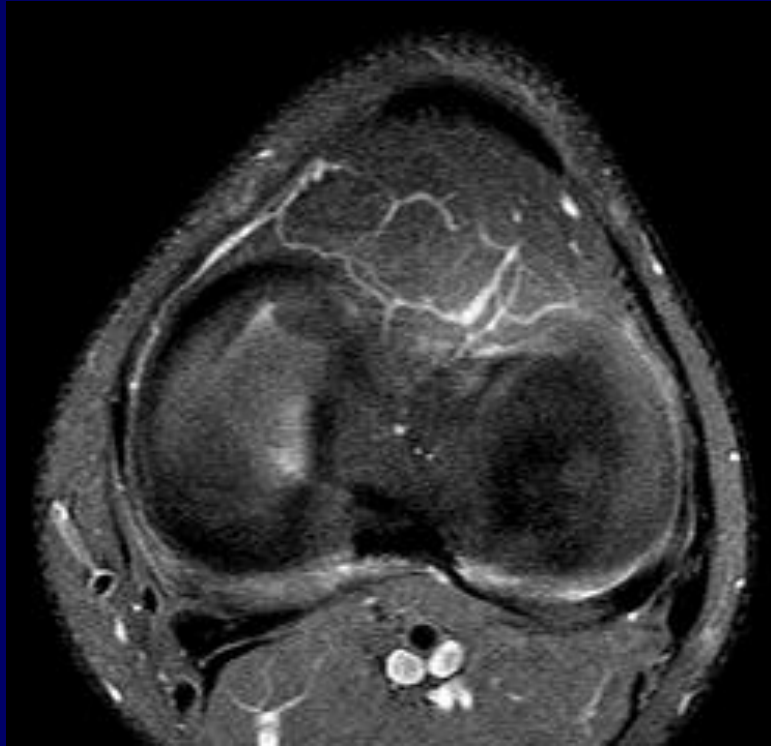
79 yo male with shoulder pain

- Large subacromial enthesophyte
- Sarotuberous and iliolumbar ligament calcification
- May represent DISH



CASE

16 YO WITH HX OF INJURY 2 YRS AGO
DURING WRESTLING WITH
CONTINUED PAIN



Small Radial Tear