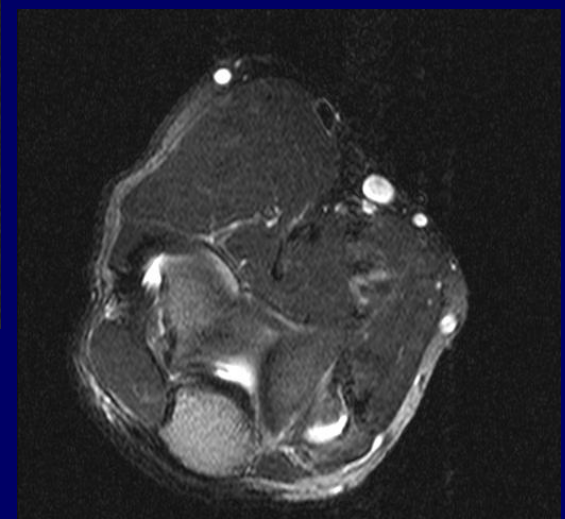
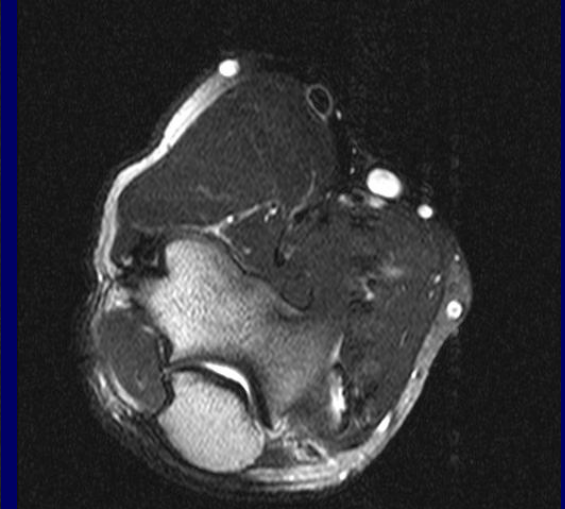
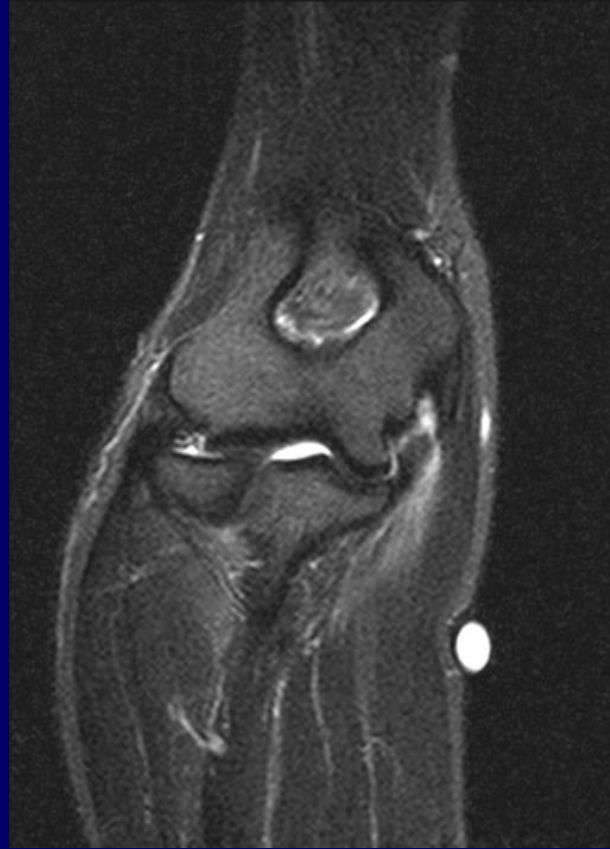
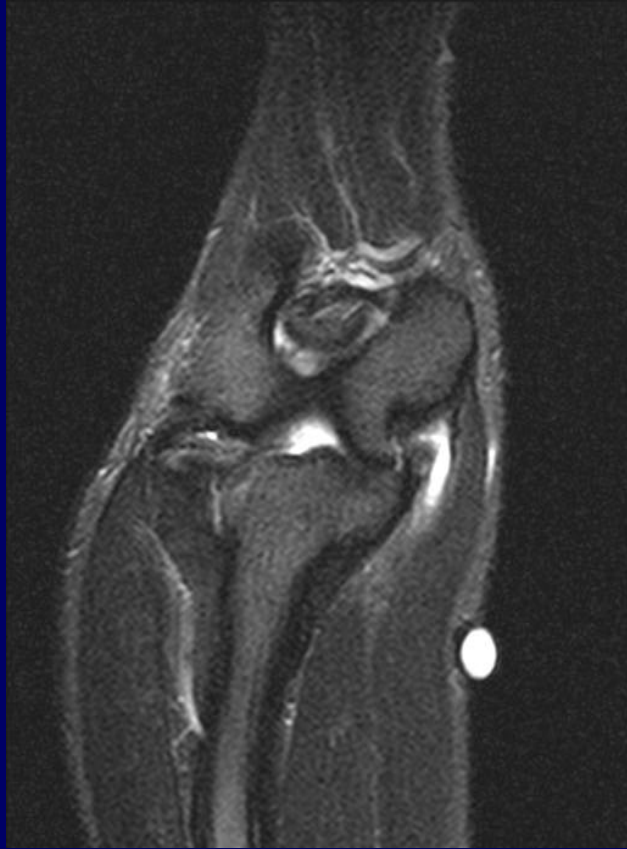


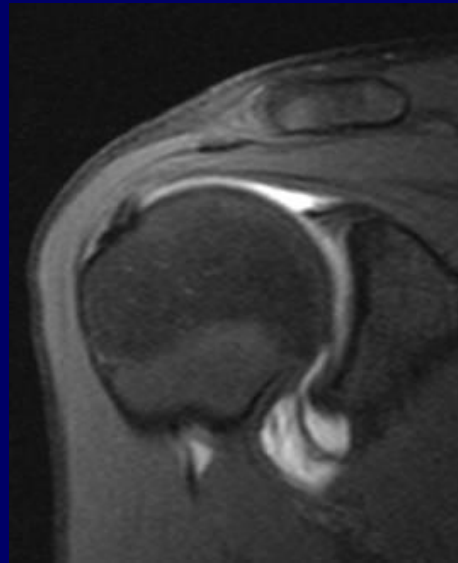
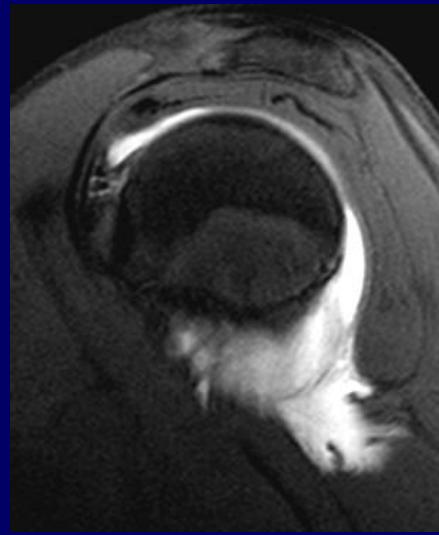
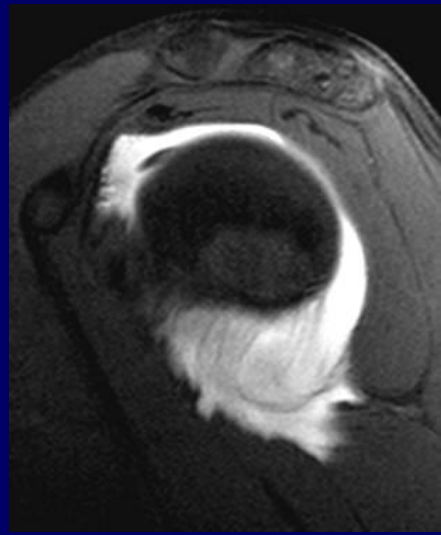
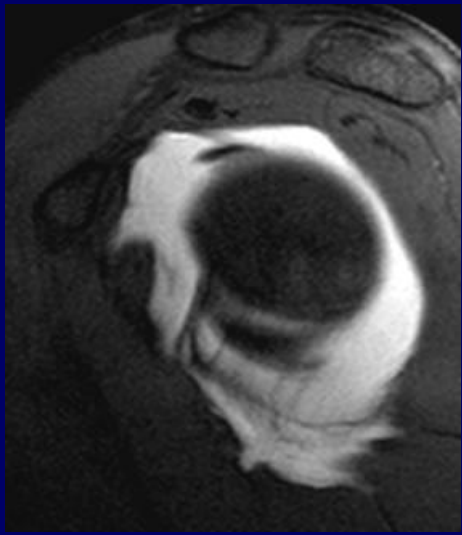
March 2, 2006

34 yo M pitcher w/ pain and
“pop” after throwing hard



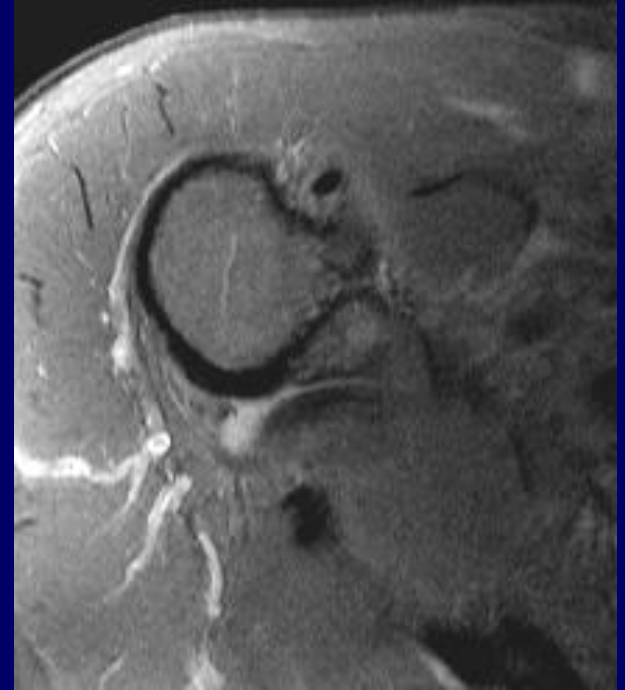
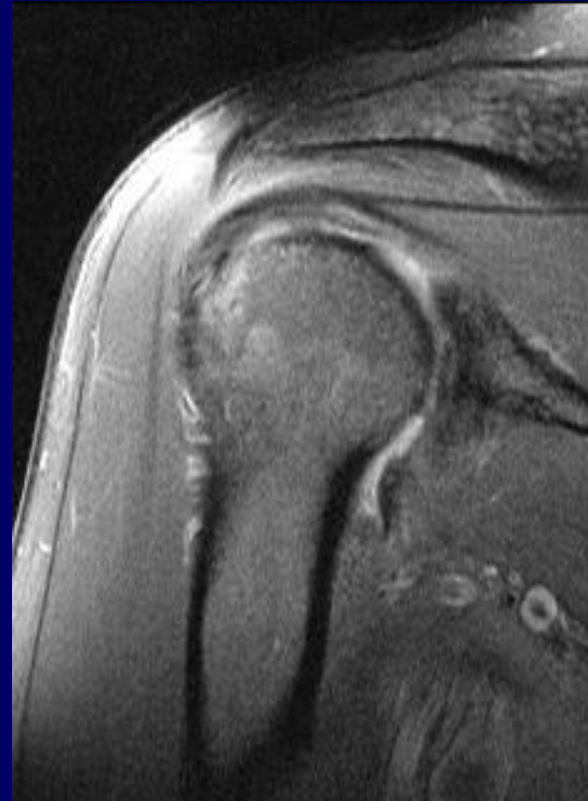
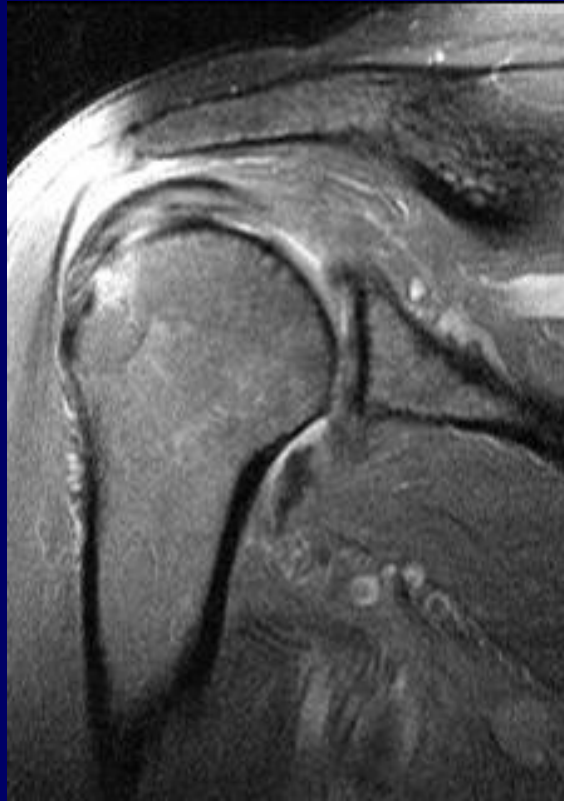
- Acute rupture of anterior band of UCL in background of chronically thickened UCL

19 yo M w/ “popping” in shoulder
after MVA and airbag deployment
4 months ago

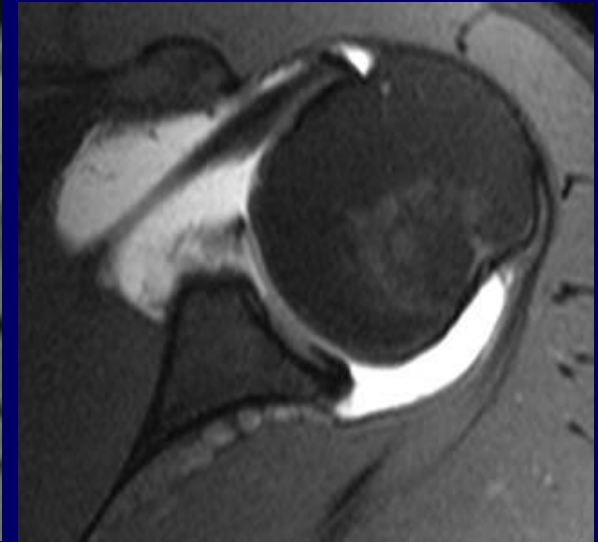
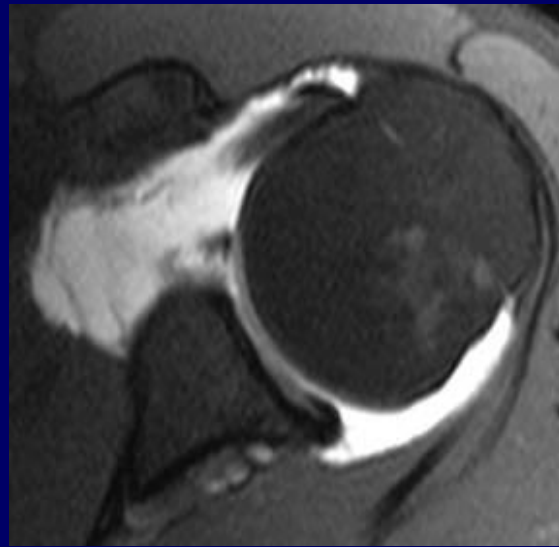
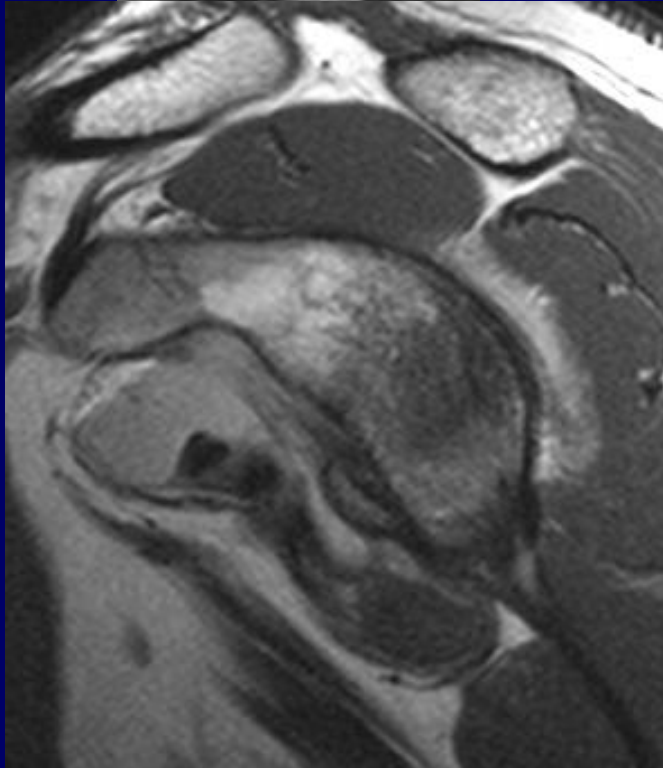
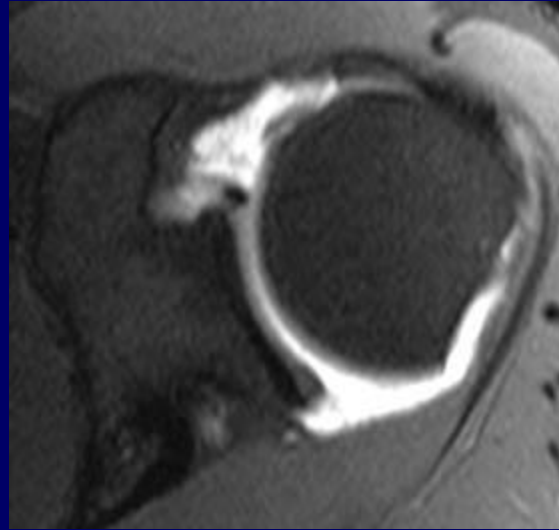
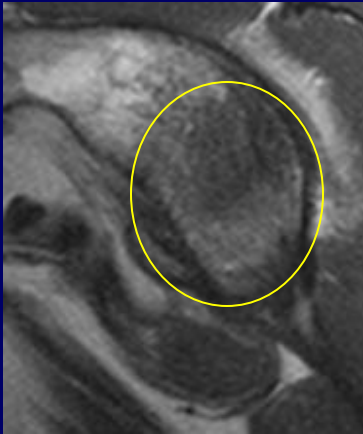


Axillary Pouch,
PIGHL Injury

Suspected PHAGL in a patient with posterior instability and hx of possible remote post. Disloc.



Hx mult prior disloc. With bony bankhart and hill sachs.



64 yo F h/o multifocal
degenerative OA, w/ chronic feet
pain

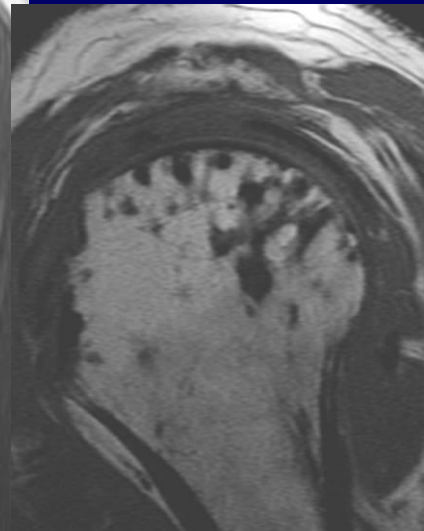
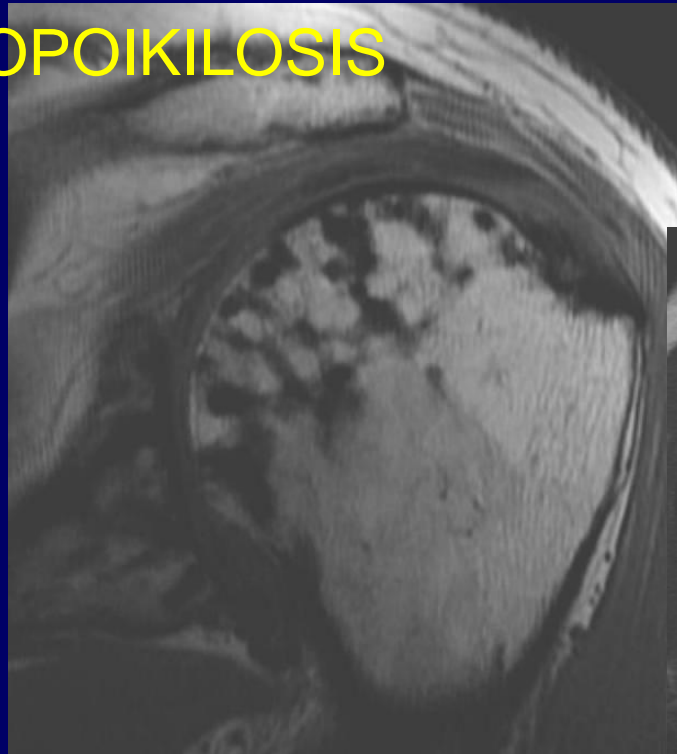
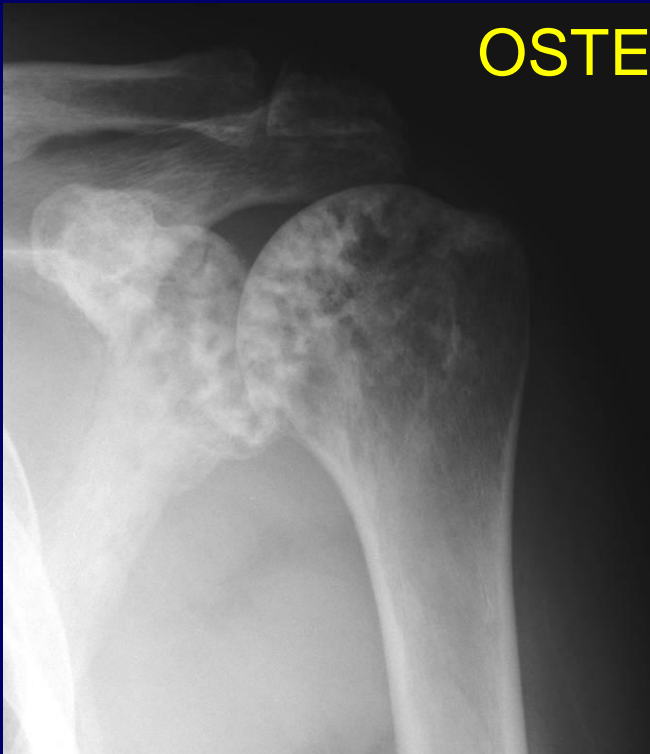


OA VERSUS GOUT



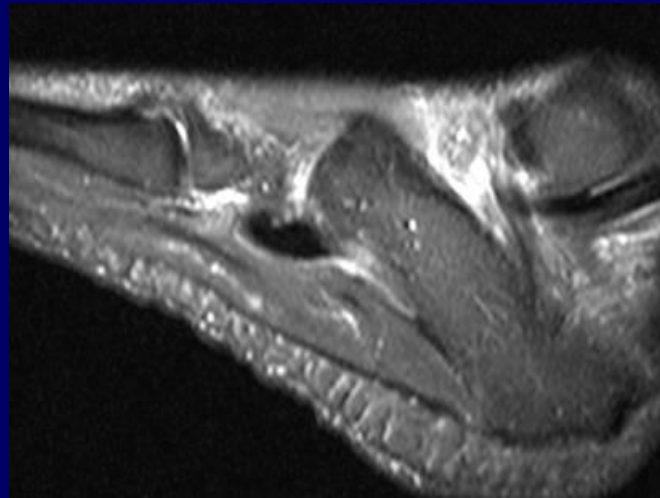
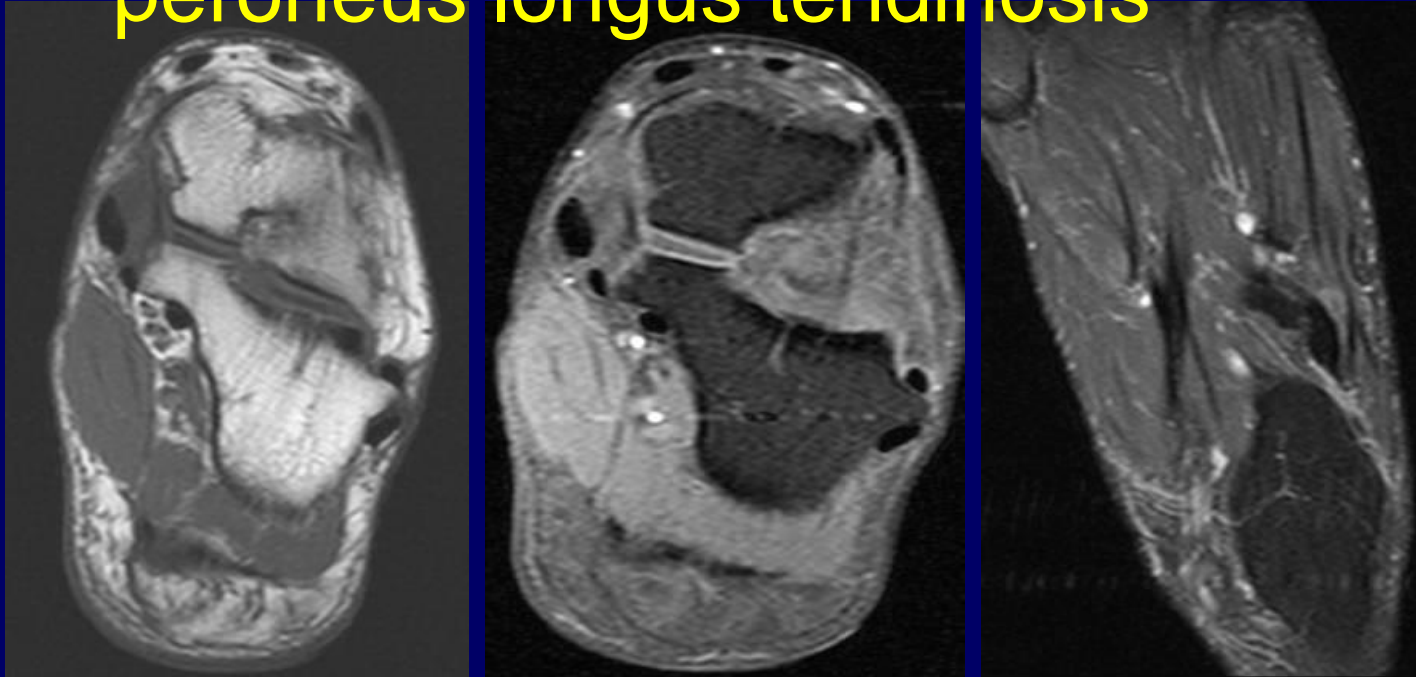


OSTEOPOIKILOSIS



48 year old female with dorsolateral foot pain for 2 years. No trauma

- Peroneal tubercle hypertrophy and severe peroneus longus tendinosis



- 49 year old woman with hand pain. No history in clinical chart



- DDX- Nonerosive arthropathy- SLE, Jacouds arthropathy, less likely sclerodema

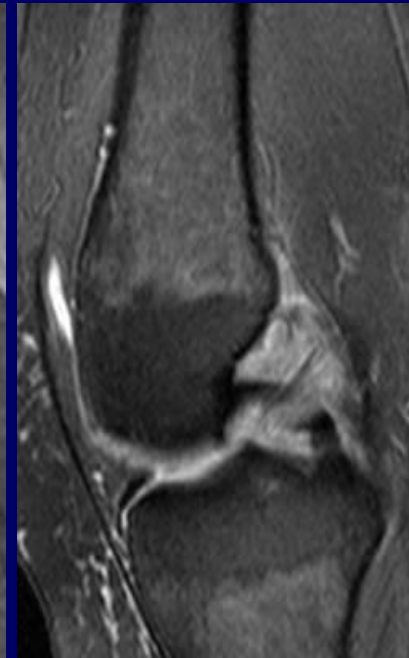
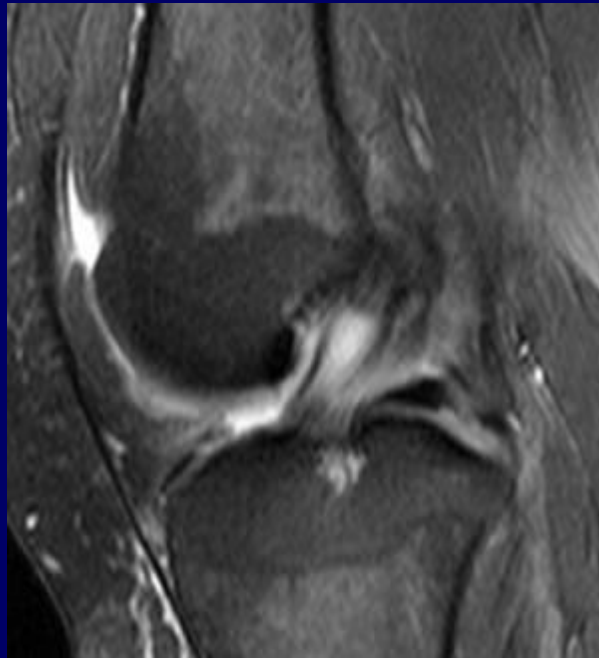
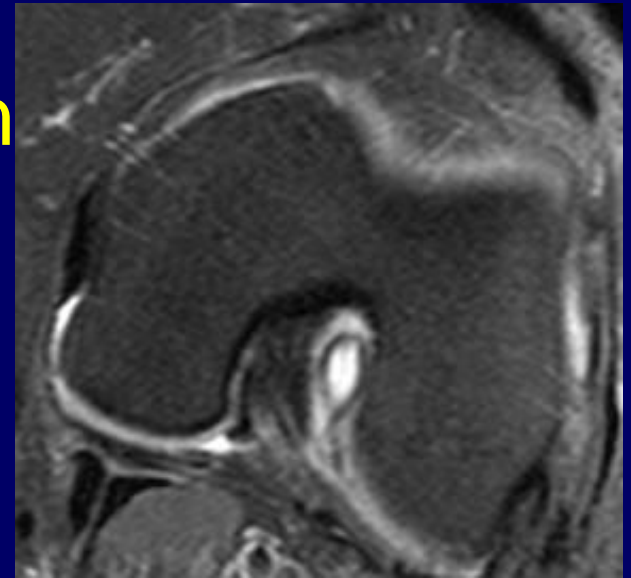
71 with knee pain over 2 years now with recent worsening over last 6 weeks. No trauma.

- Lateral tibial plateau SONC
- Lateral meniscal complex tear and extrusion as well as medial meniscus



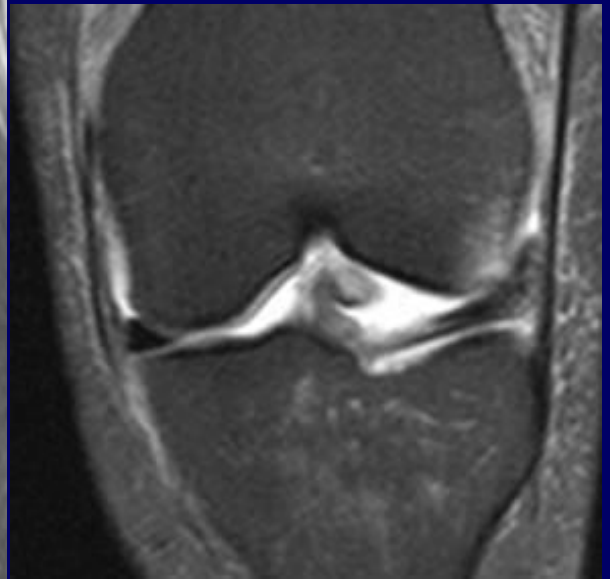
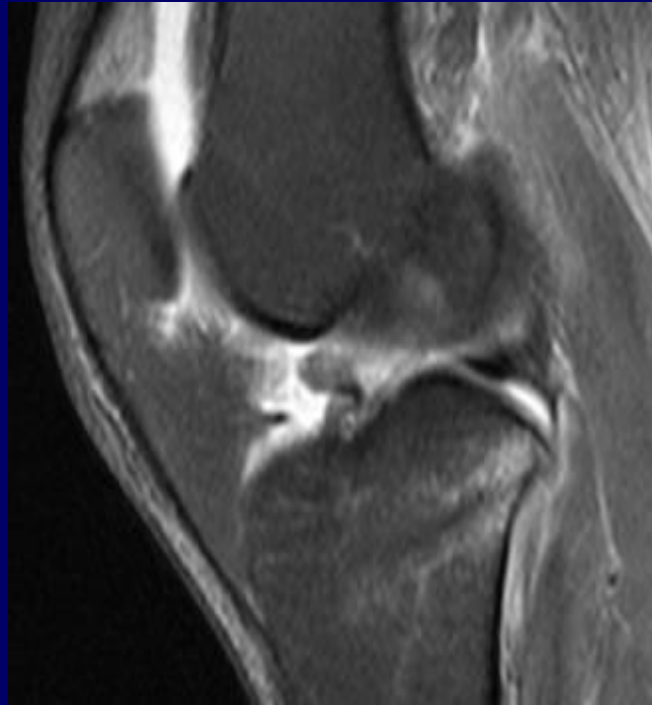
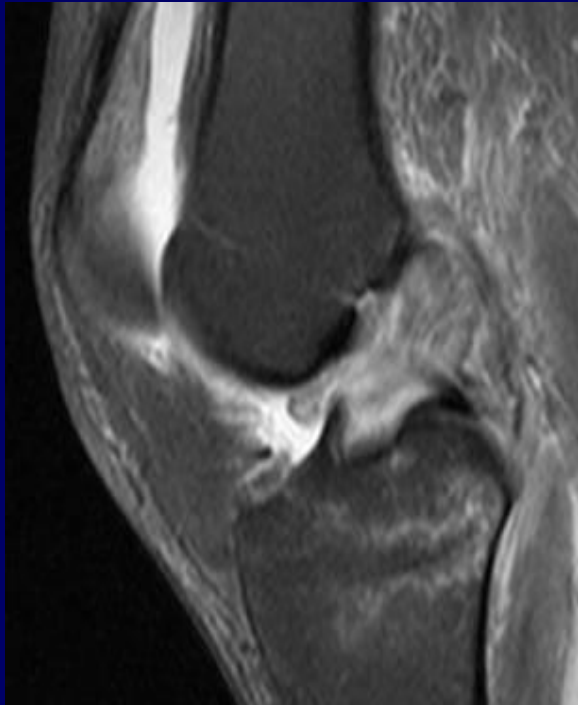
36 year old female with knee pain on
weightbearing and joint stiffness

Mucinous cystic degeneration
of ACL with Intraosseous
and paracruciate ganglion
cysts at tibial attachment



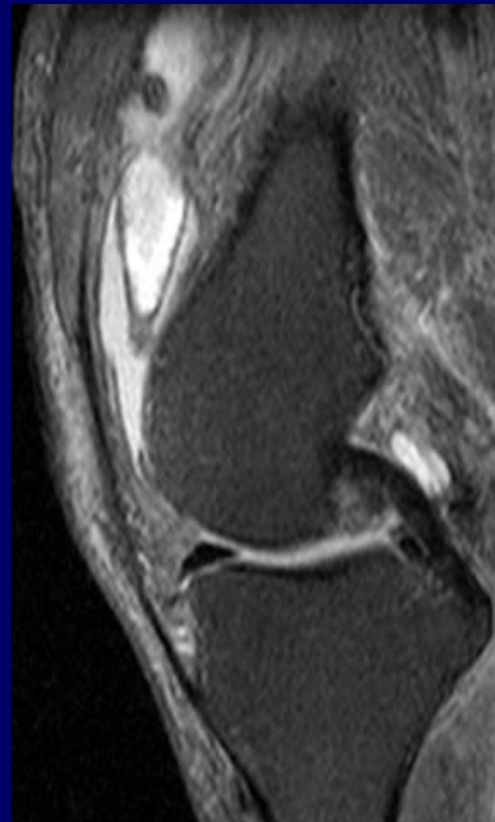
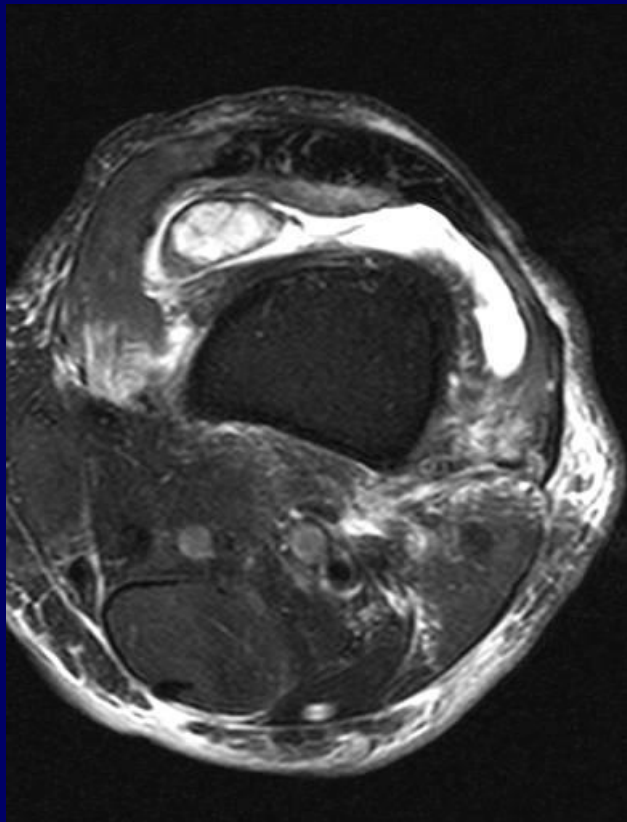
38 year old female with left knee injury

Complete mid substance ACL tear with
entrapment of tibial stump which is
displaced anterocentrally into intercondylar
notch



80 year old with knee pain after round of golf. Had bloody joint aspiration but no crystals. Please evaluate for inflammatory process, PVNS, internal derangement.

Findings: suggestive of a suprapatellar syndrome, manifested by thickened synovium and plicae consistent with hemosiderin correlating with bloody aspiration.

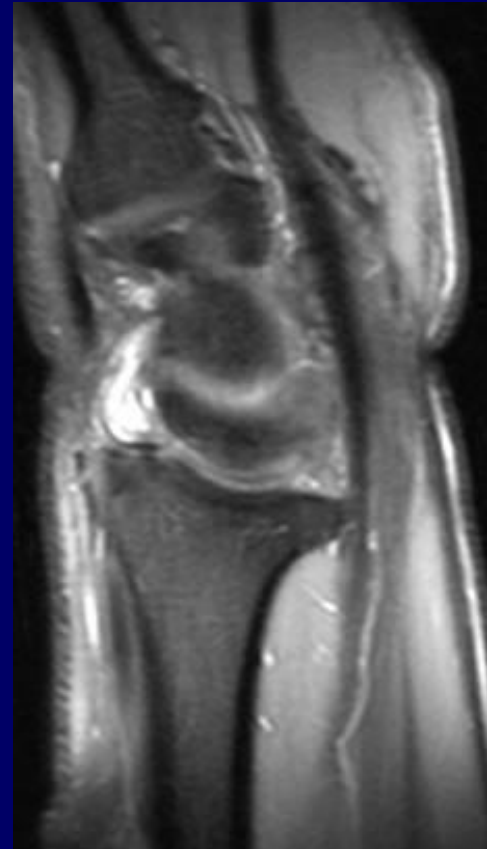
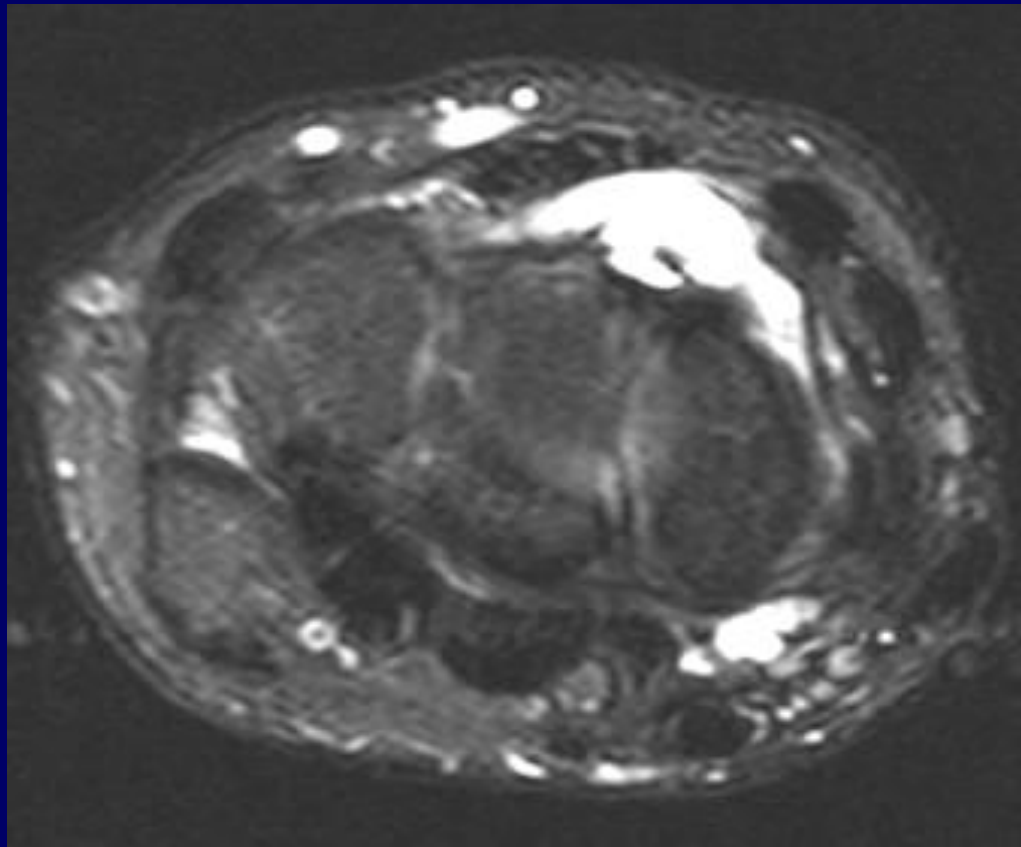


23 YEAR OLD BASEBALL PLAYER FOR
THE MARLINS.

IN 2002 HAD A GANGLION CYST
ASPIRATED.

PLEASE EVALUATE FOR RECURRENCE
OF CYST.

Recurrent ganglion cyst



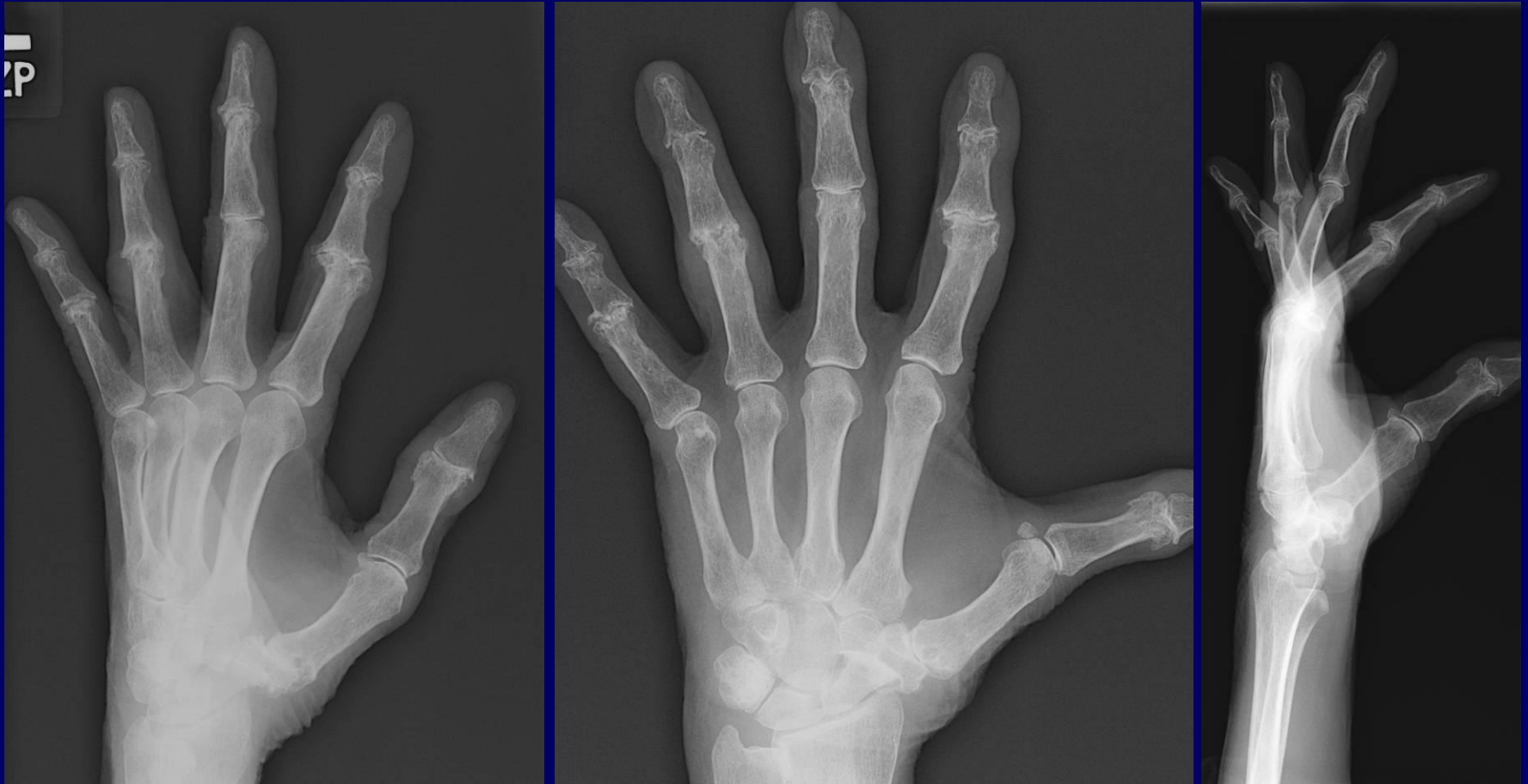
47 YEAR OLD WITH
SESSILE
OSTEOCHONDROMA
OF DISTAL FEMUR



Erosive Osteoarthritis

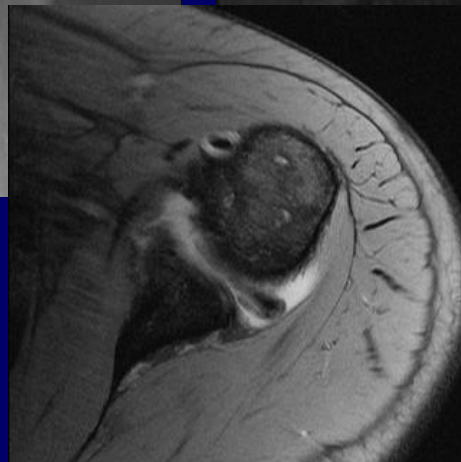
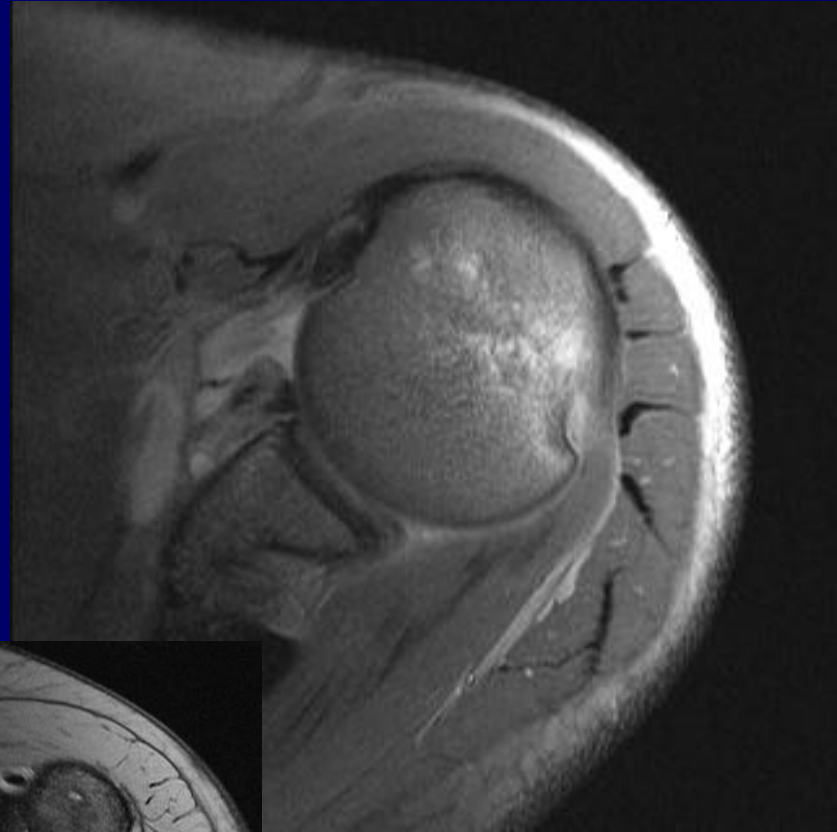


80 yo female with hand pain



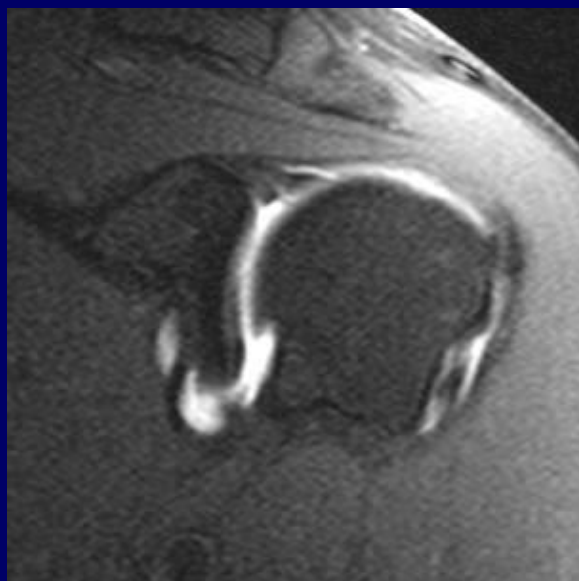
Marked central erosions in PIP and DIP joints with seagull appearance representing erosive OA

36 yo M with h/o dislocation



Hill-Sachs's and Bone
Bankart Lesion

65 yo female rule out rotator cuff tear

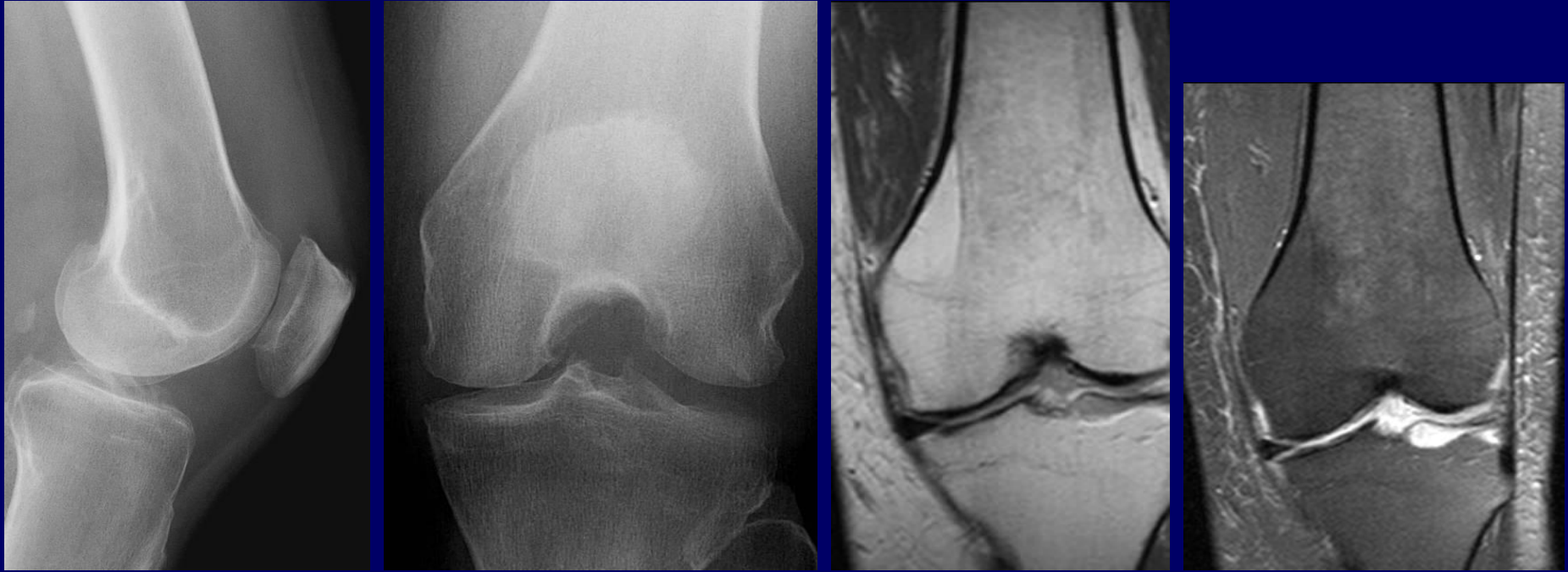


Delaminated Tear

Knee pain.

TC/MP

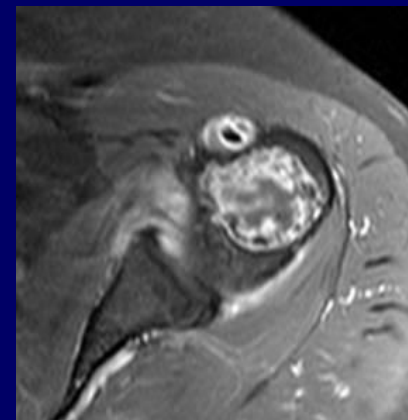
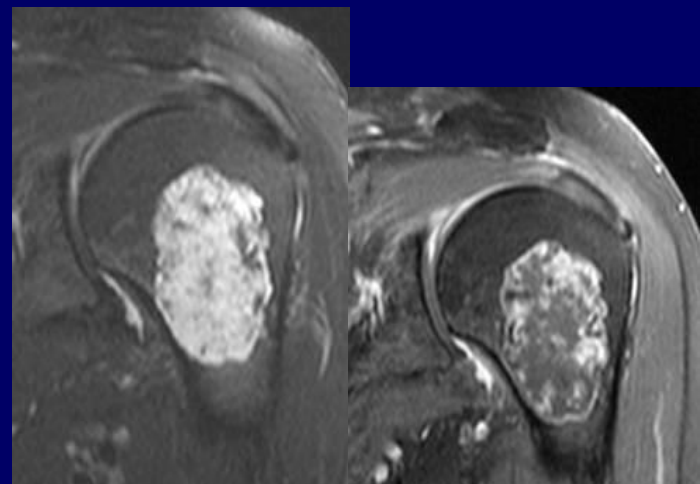
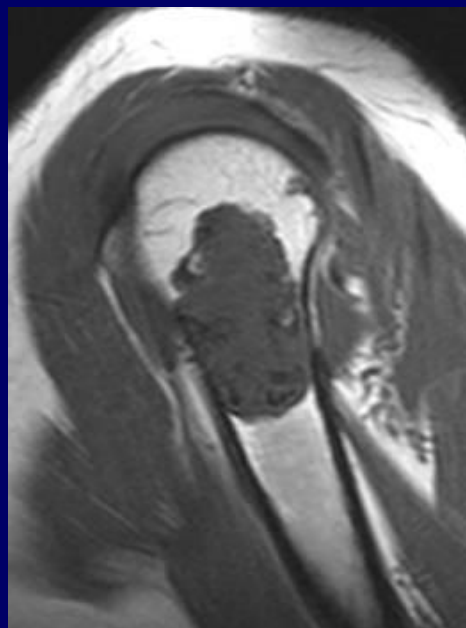
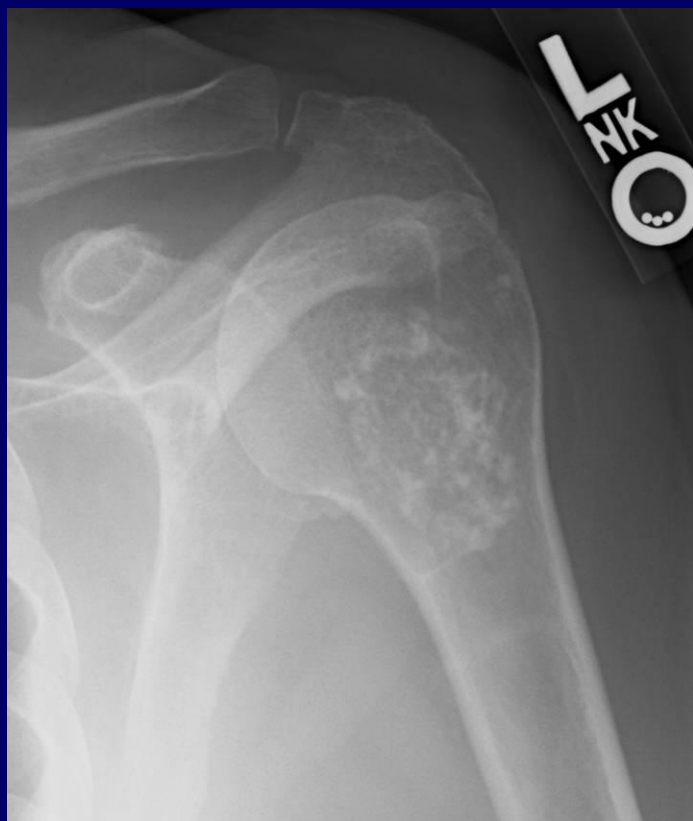
YE 700280350



Intraosseous lipoma

55 yo woman with left shoulder pain.

TC/AG

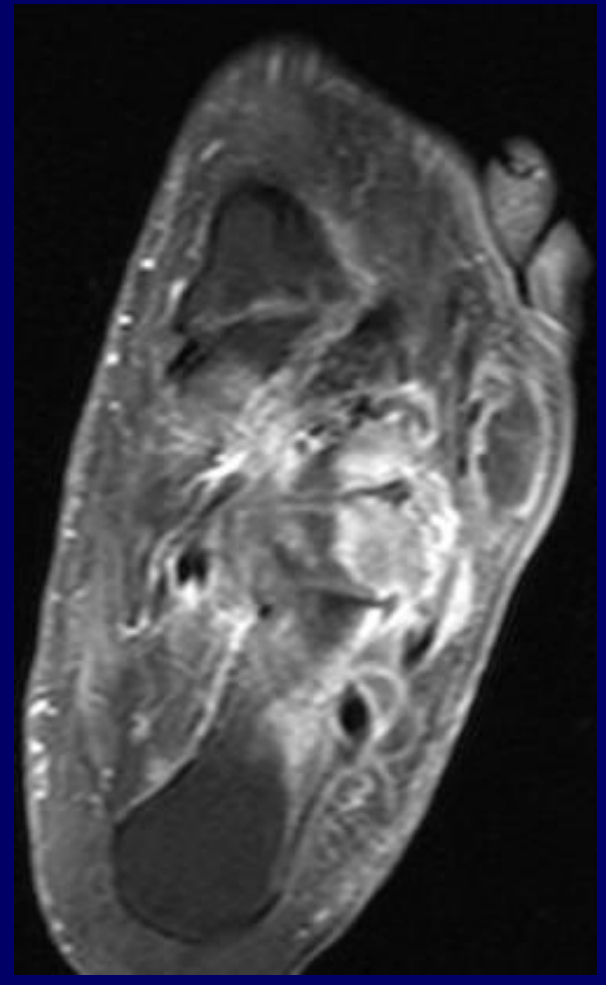
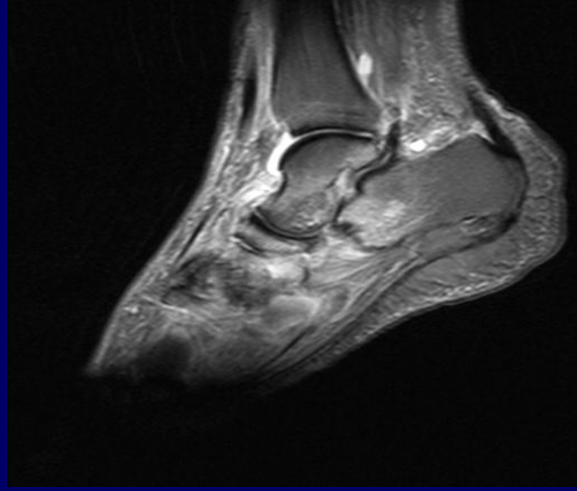
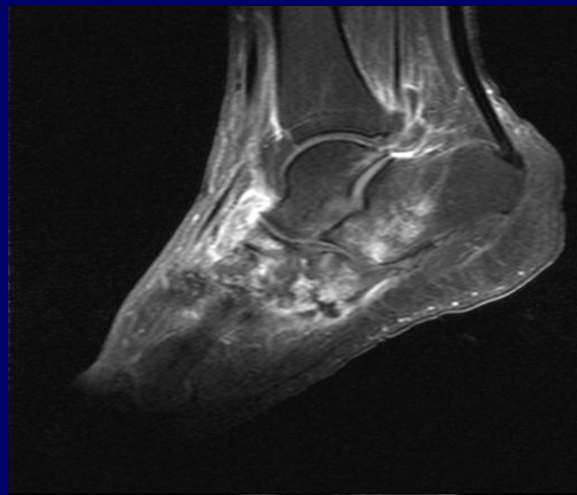


Low grade chondral lesion. Biopsy recommended.

History of osteomyelitis

TC/TH

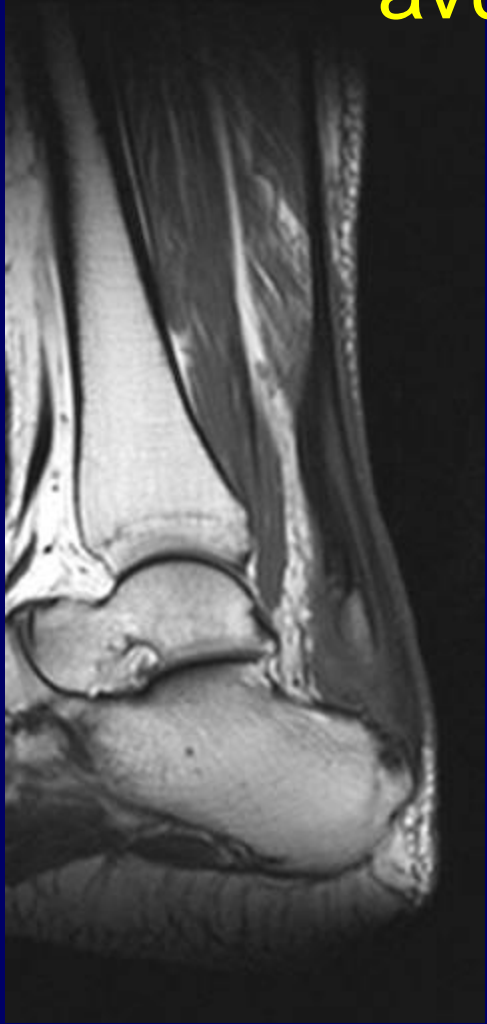
LM607261926



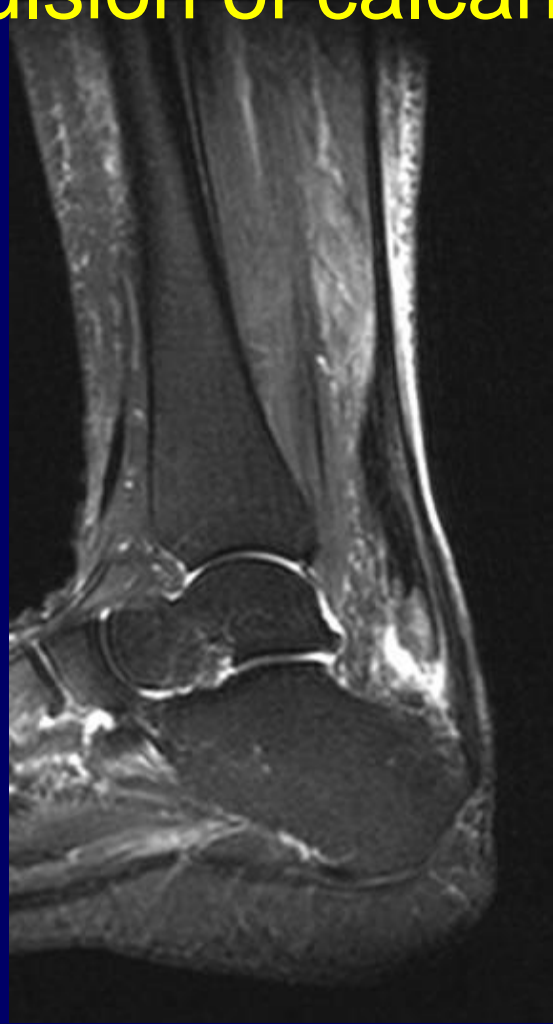
Infected Charcot joint

55 year old non diabetic female with ankle injury while walking upstairs 5 days ago

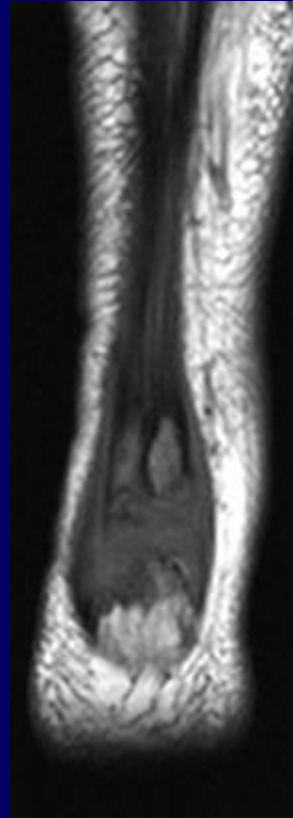
Partial tear of deep fibers of Achilles tendon with avulsion of calcaneal tuberosity



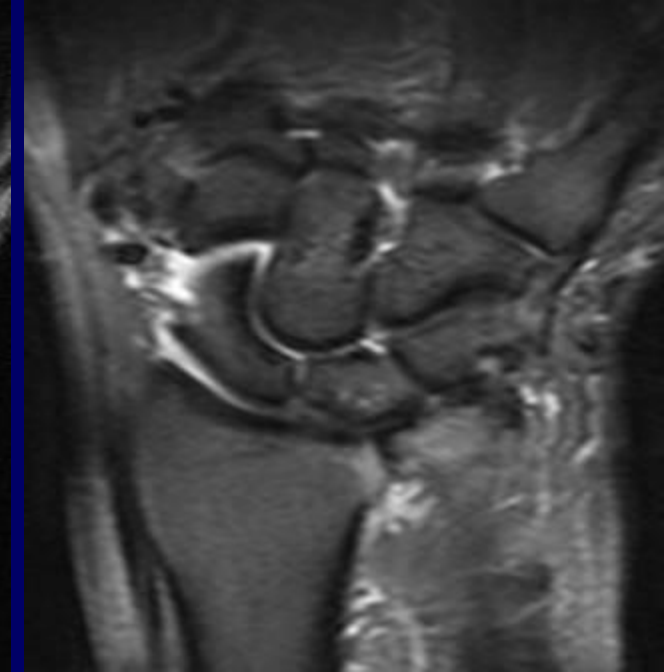
Sag T1



Sag T2 FS



56 year old male with right wrist pain.
Occupation is construction engineer.



Ulnocarpal abutment

CASE

Snuff box tenderness

Scaphoid waist fracture non-union with
Humpback morphology



CASE

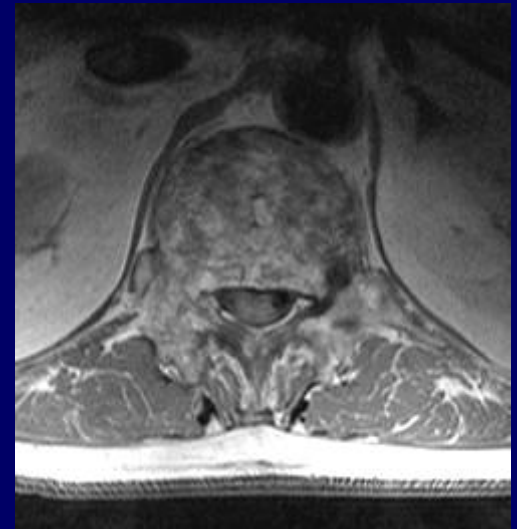
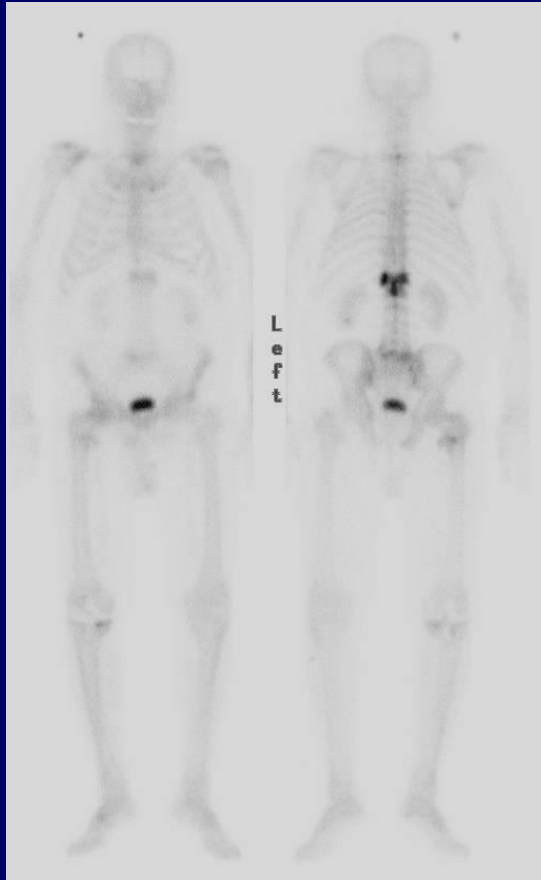
TRAUMA





CASE

65 y/o with back pain. No plain films unfortunately.



Paget's disease

CASE

Weightbearing foot radiographs in a patient with foot alignment abnormalities.

LEFT



RIGHT

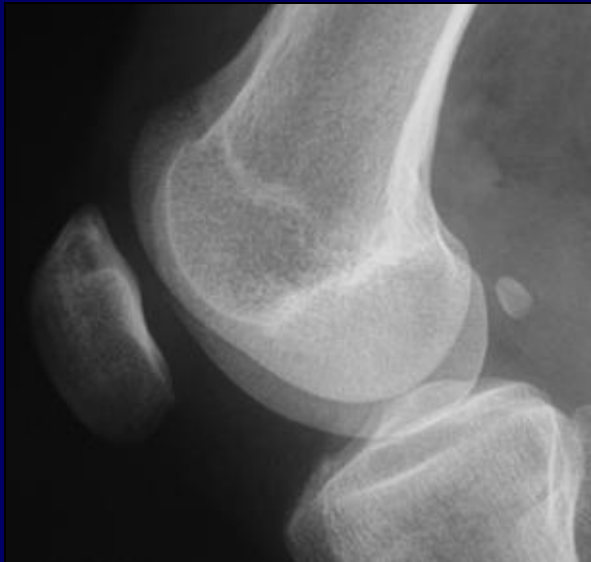


Metatarsus adductus with stress fractures

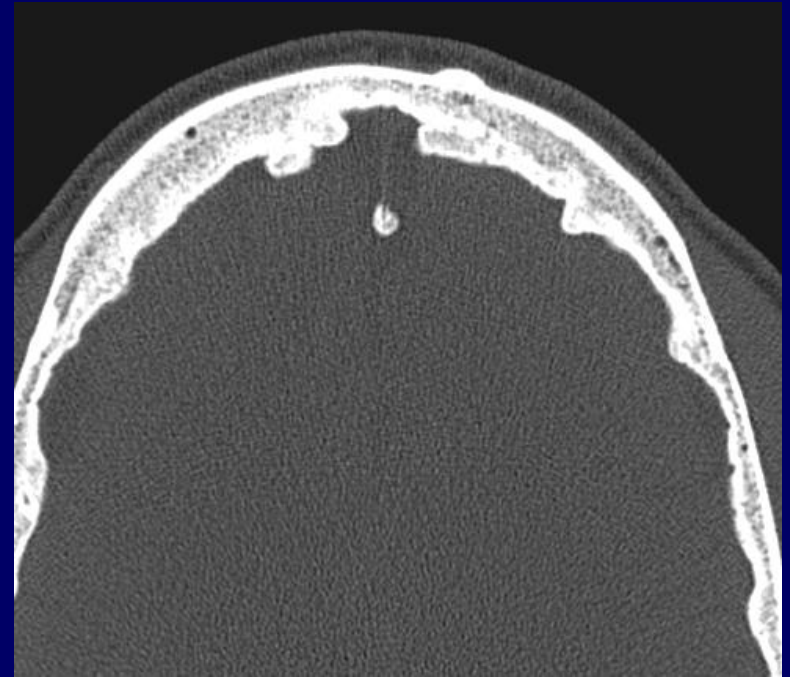
CASE



CASE

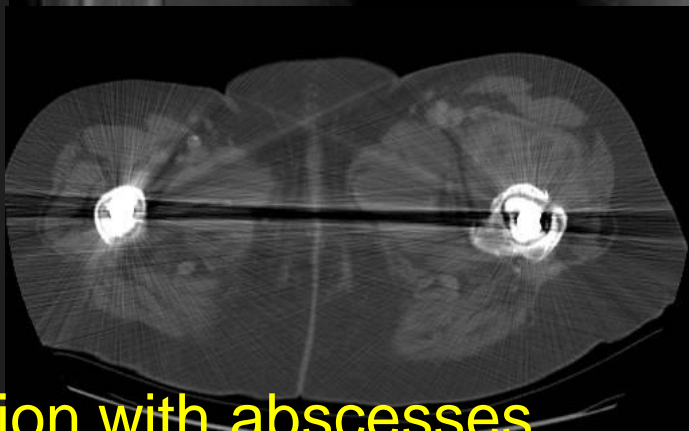
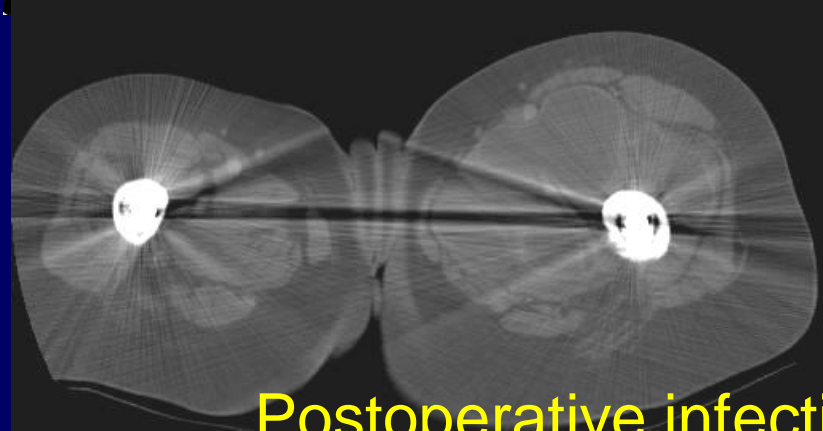


CASE



CASE

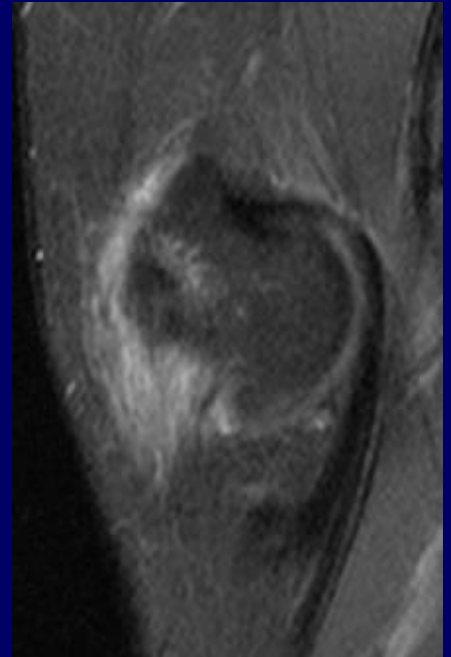
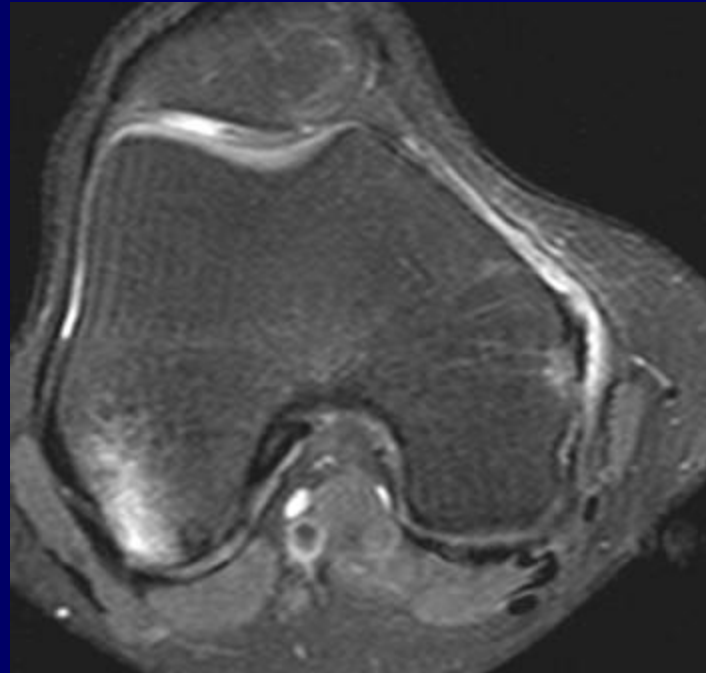
81 y/o female with chronic THA staph infection
on suppressive ABX



Postoperative infection with abscesses

CASE

20 yr old ATV accident, medial knee pain



Pure valgus stress related to external blow to lateral aspect of the knee