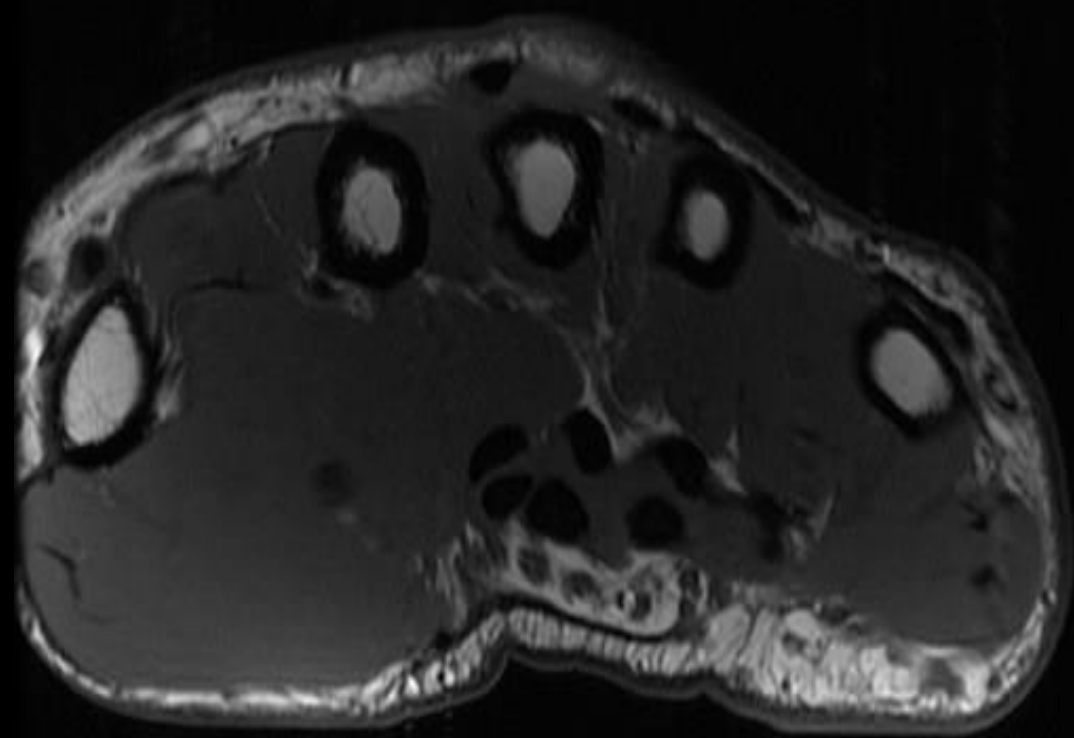
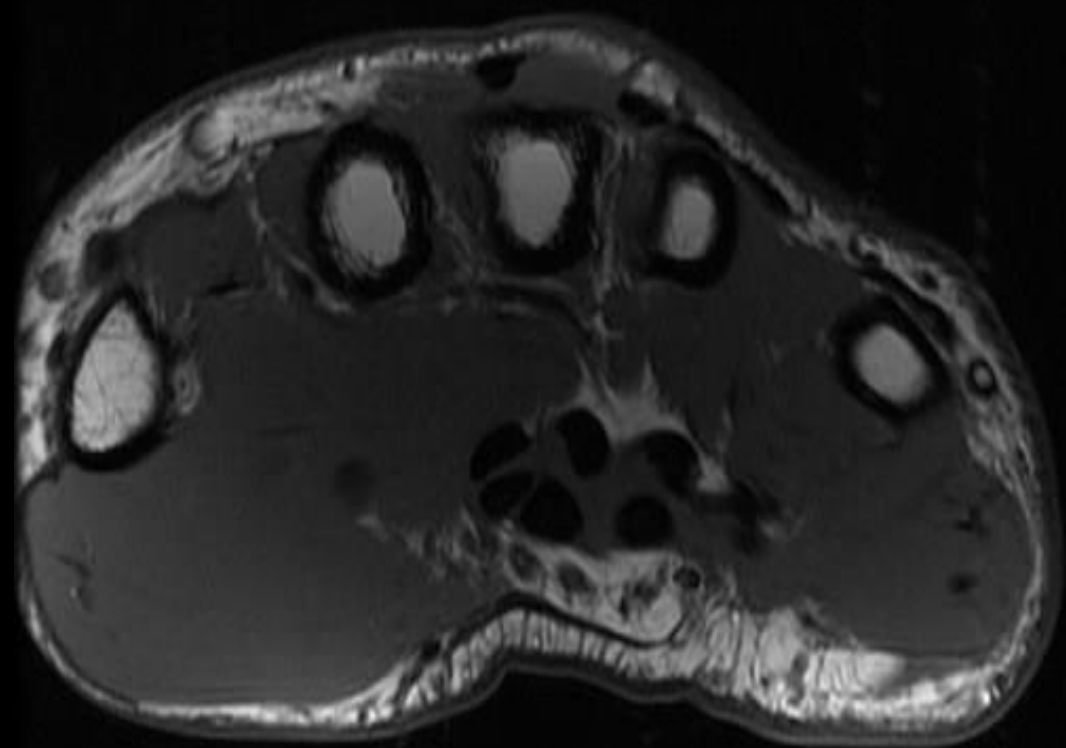
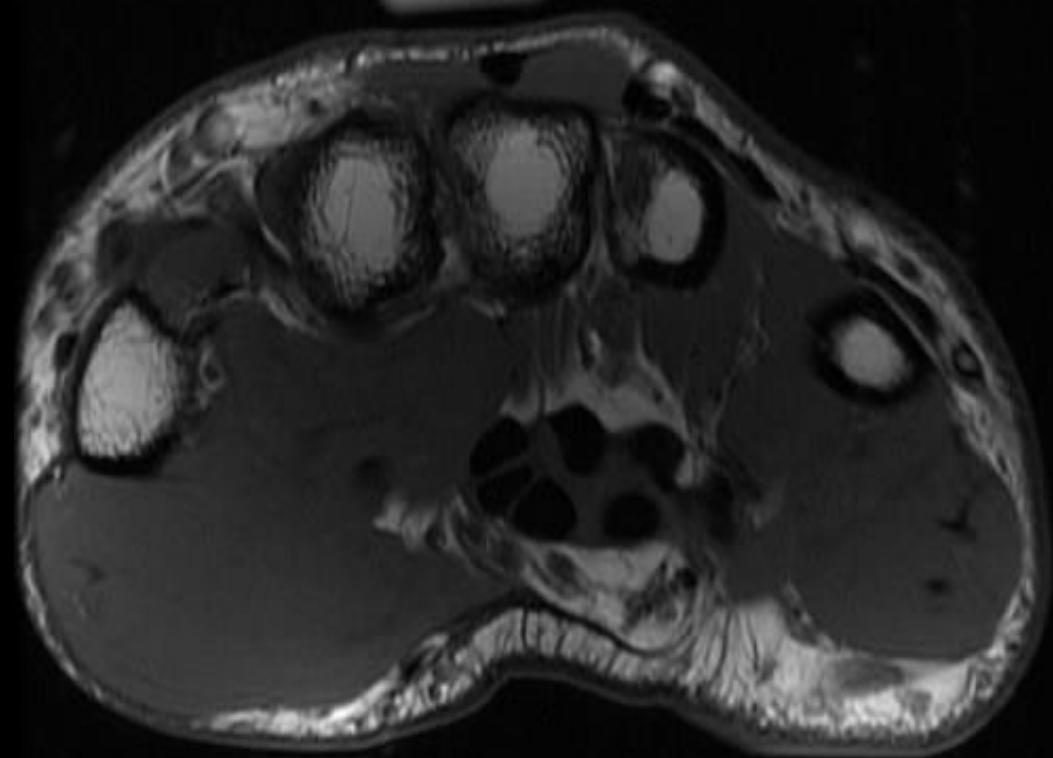


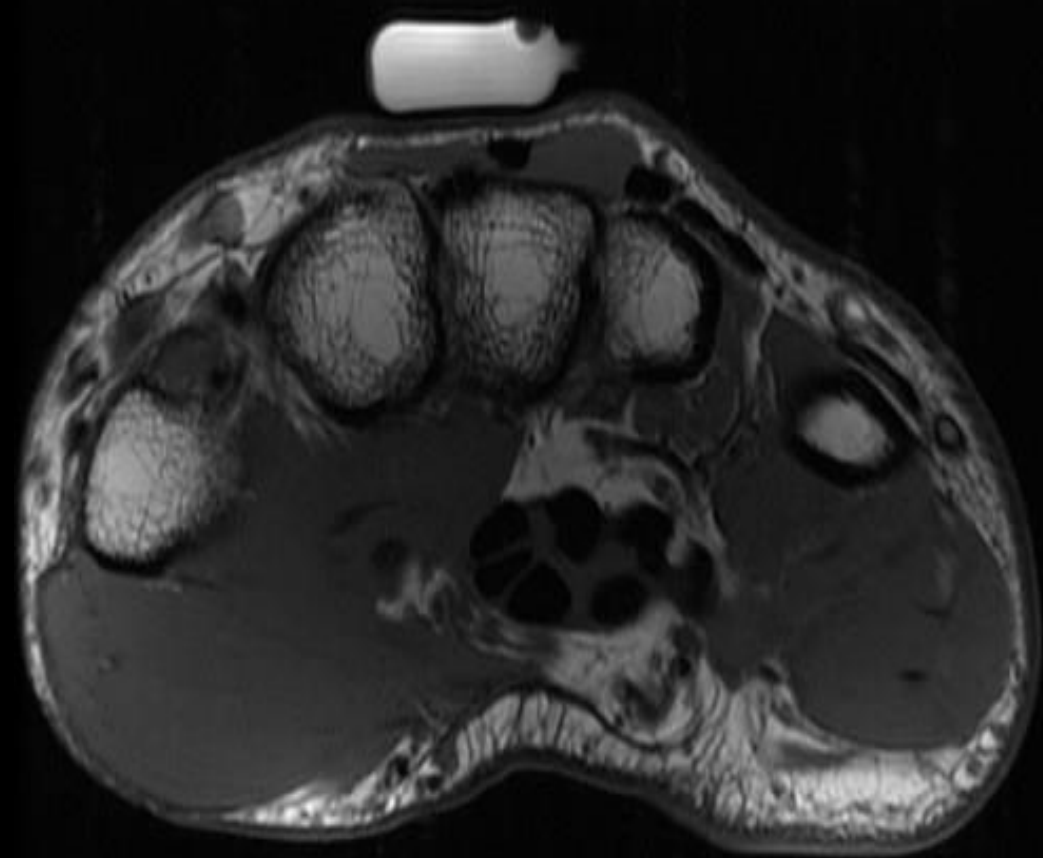
Presentation

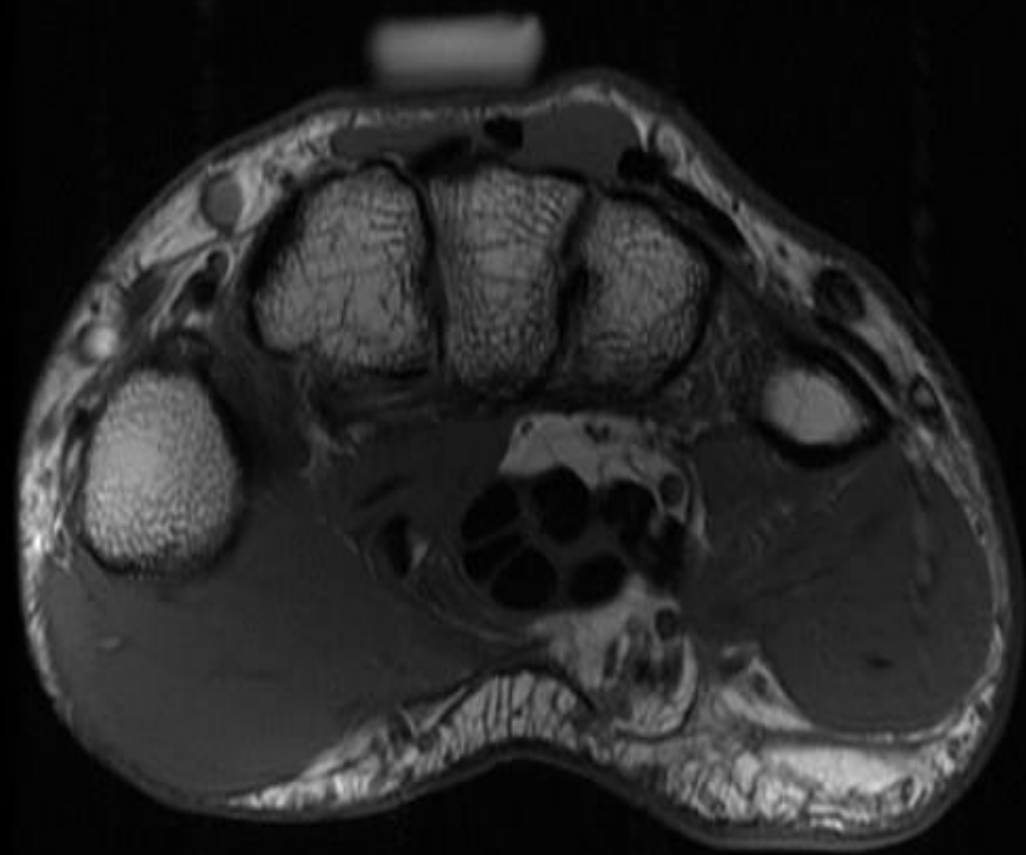
- 48 y/o M with mild stiffness/discomfort in b/l hands , worse in mornings. Note to have dorsal wrist mass b/l.

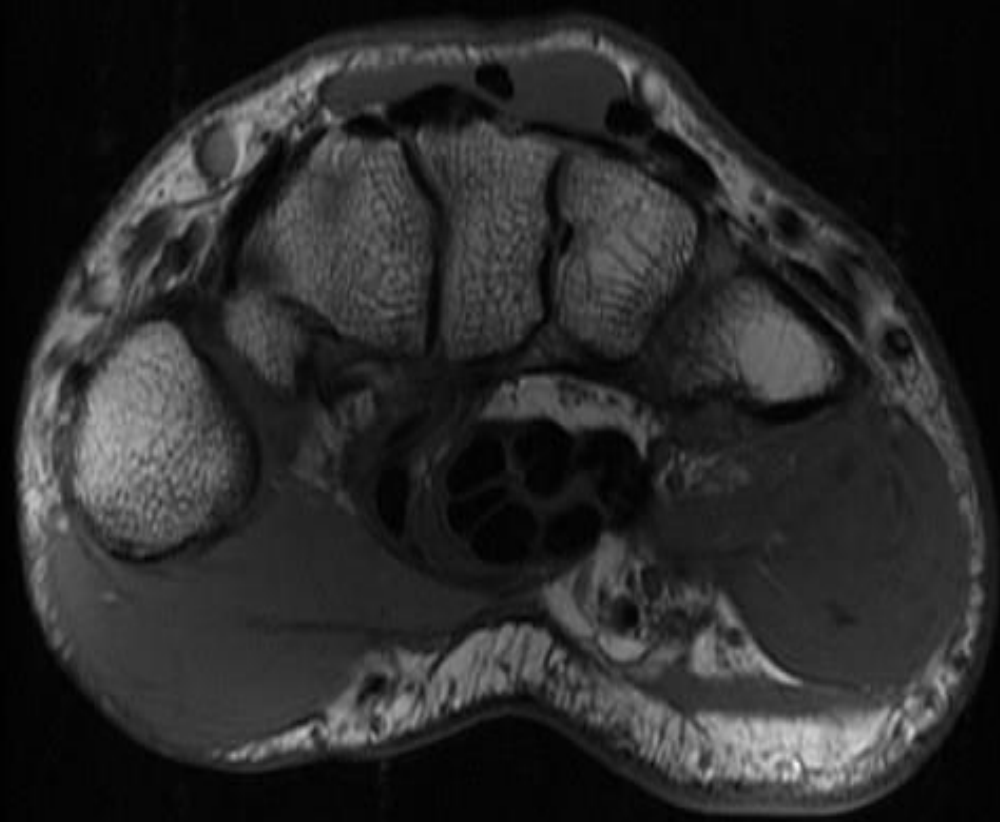


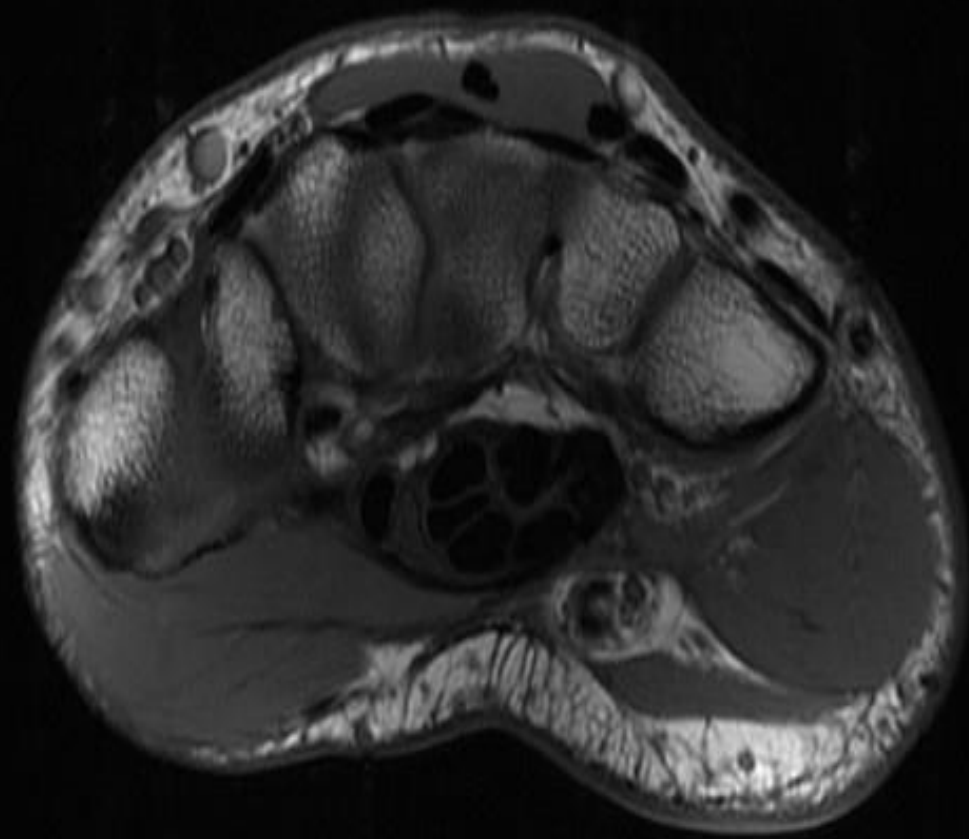


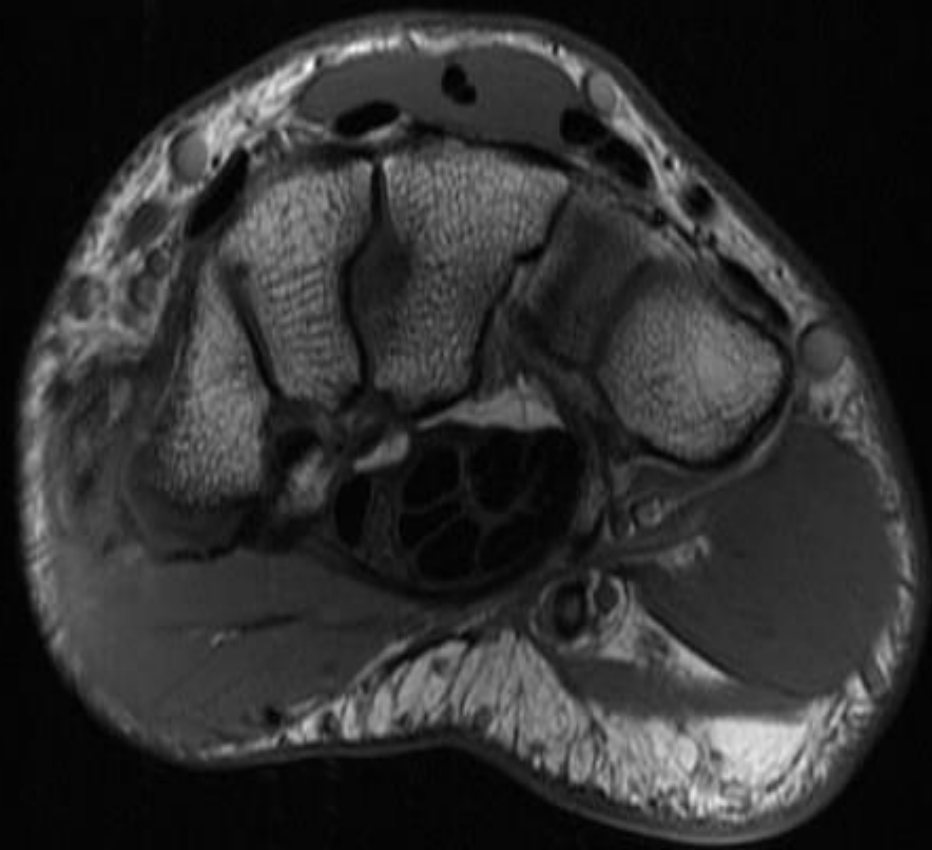


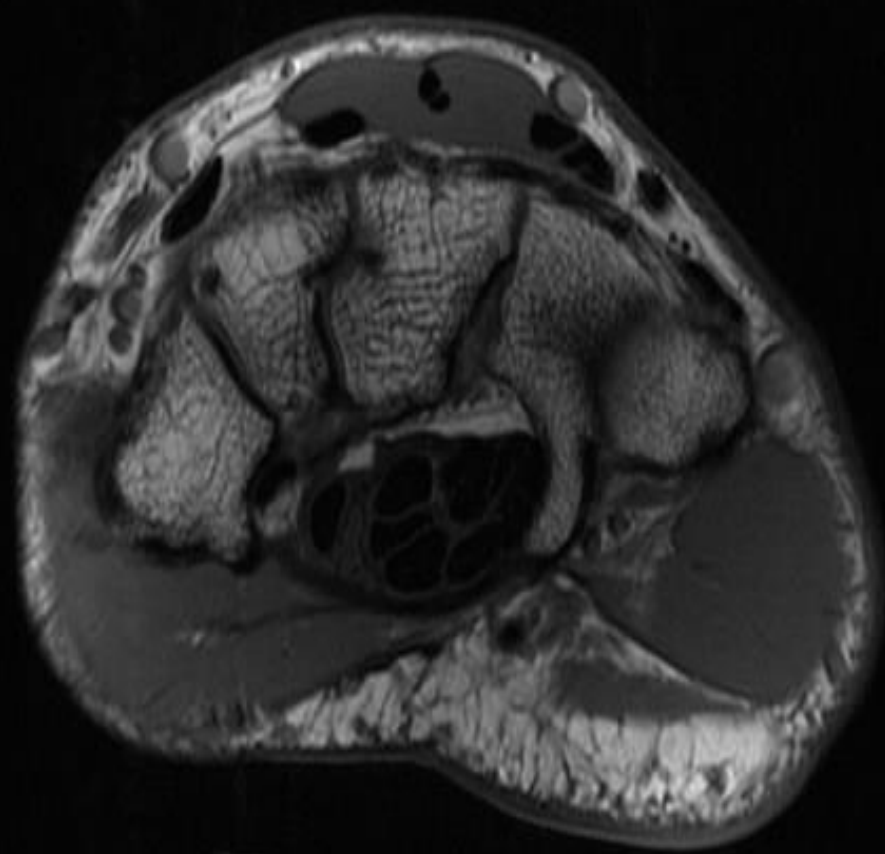


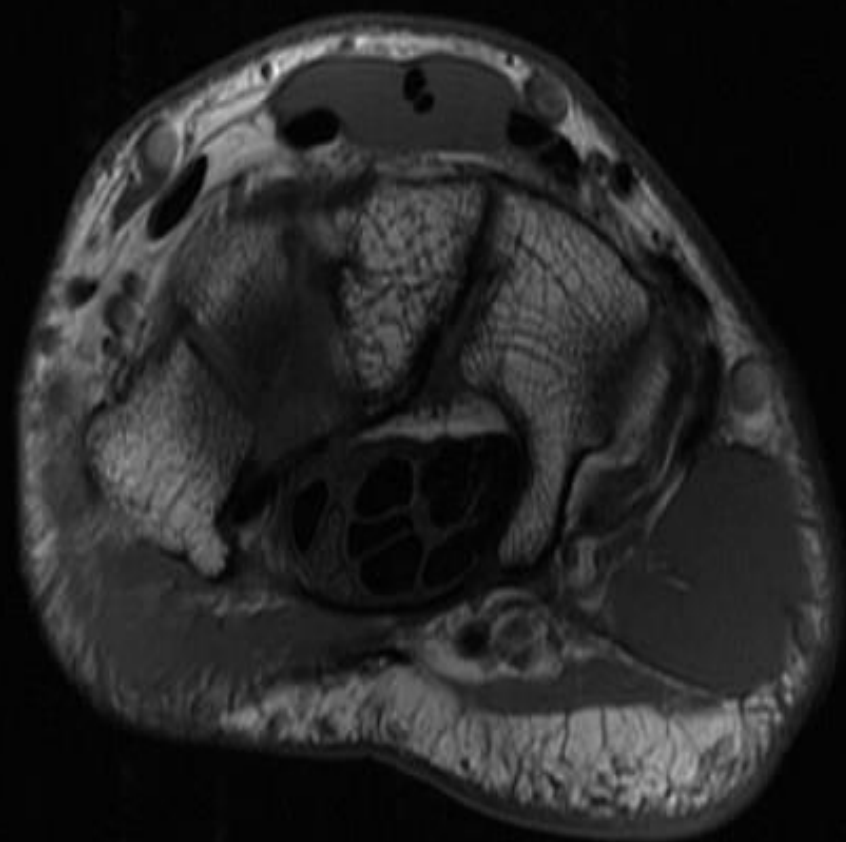


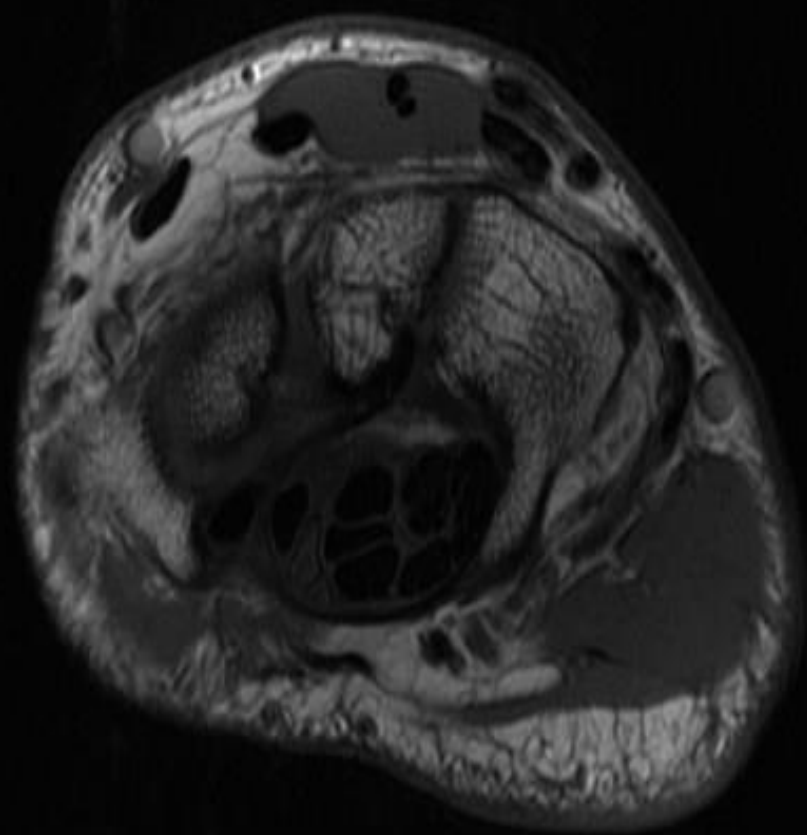


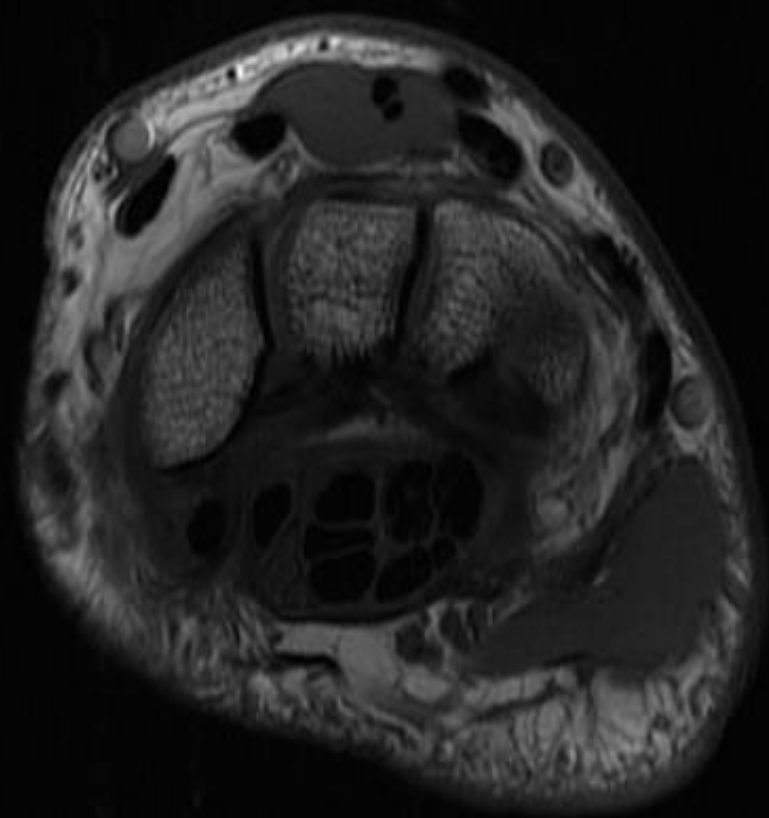


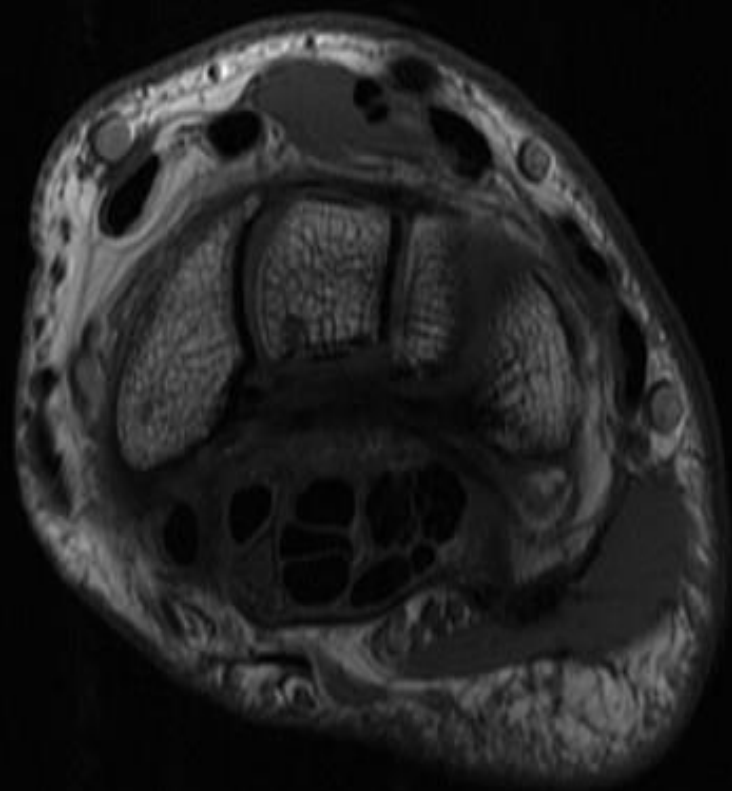


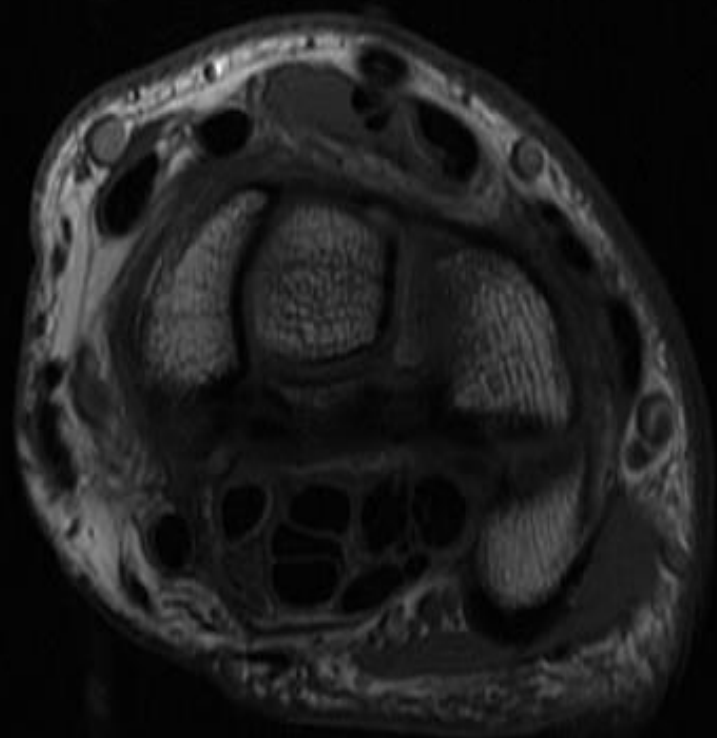


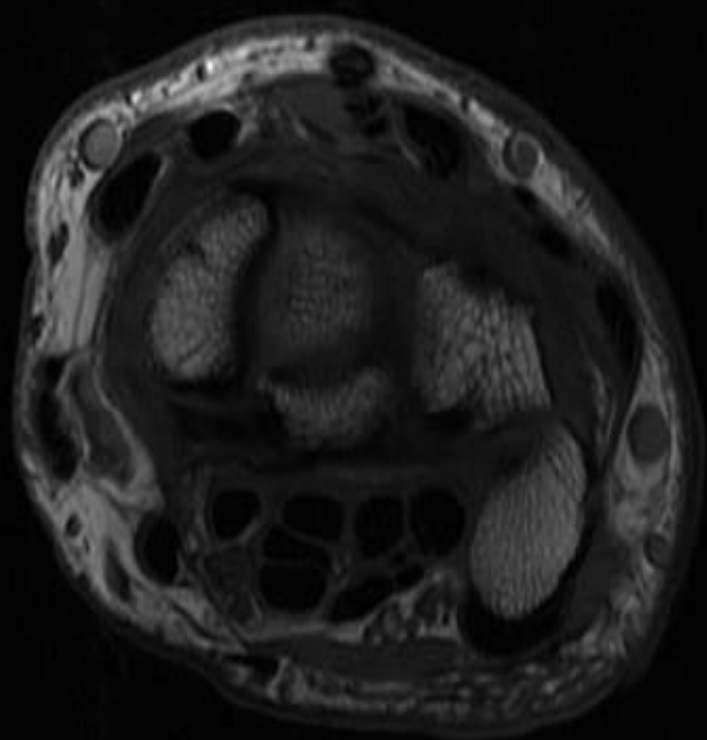


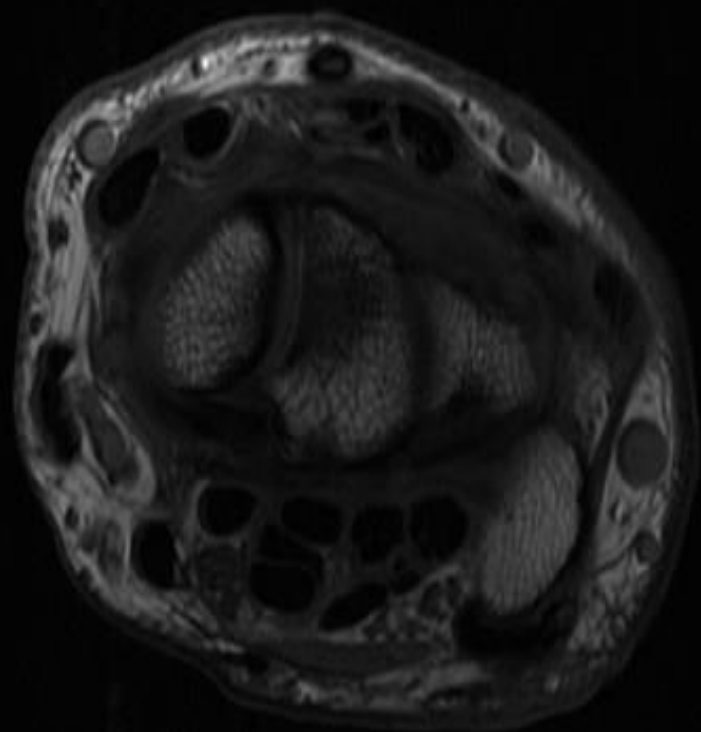


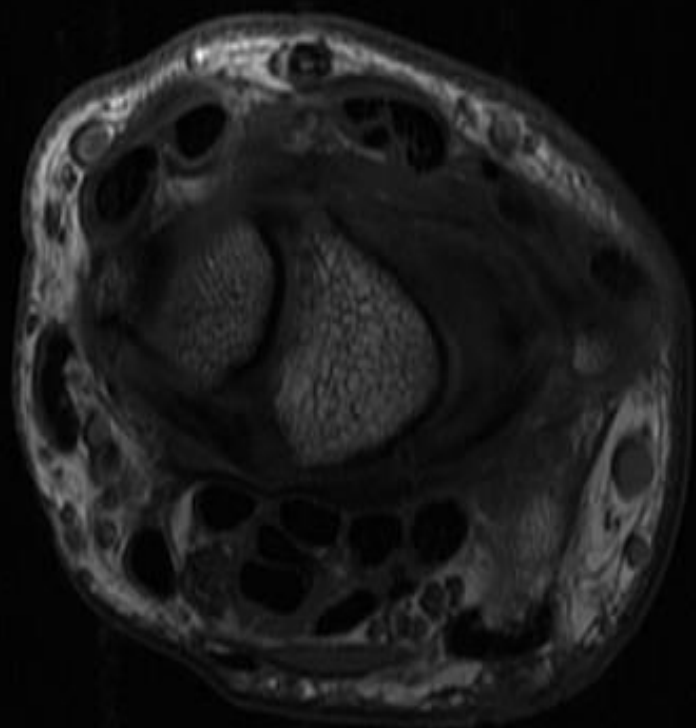


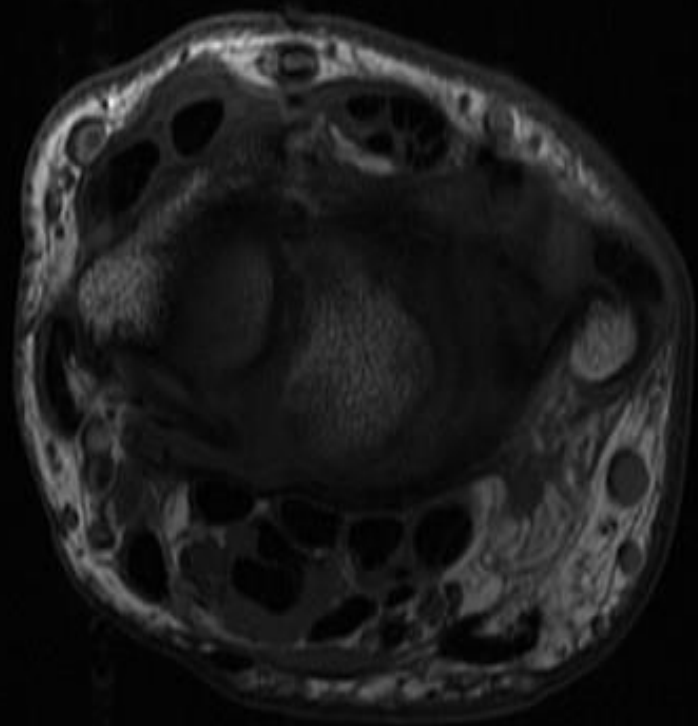


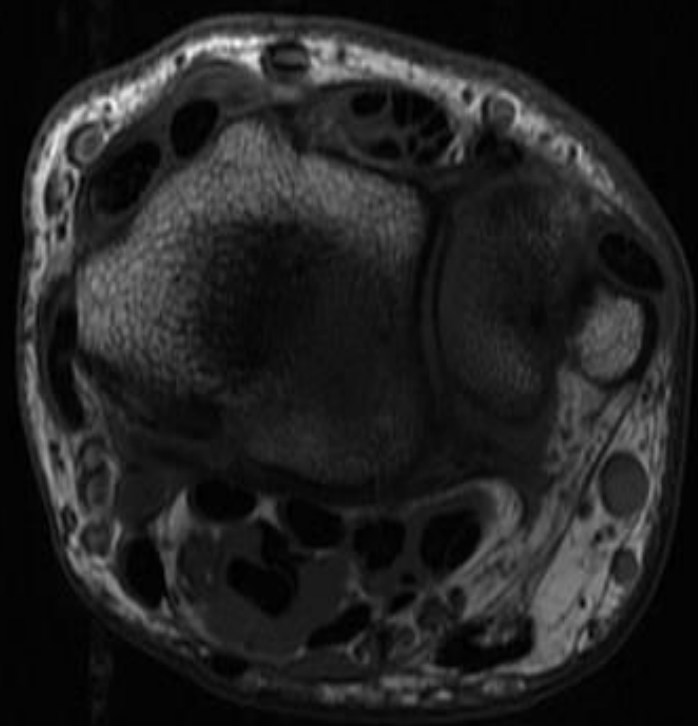


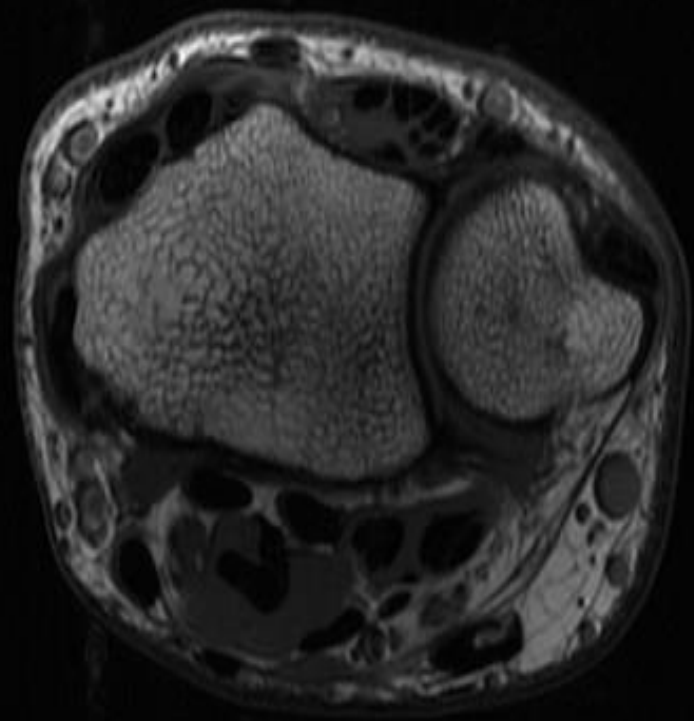


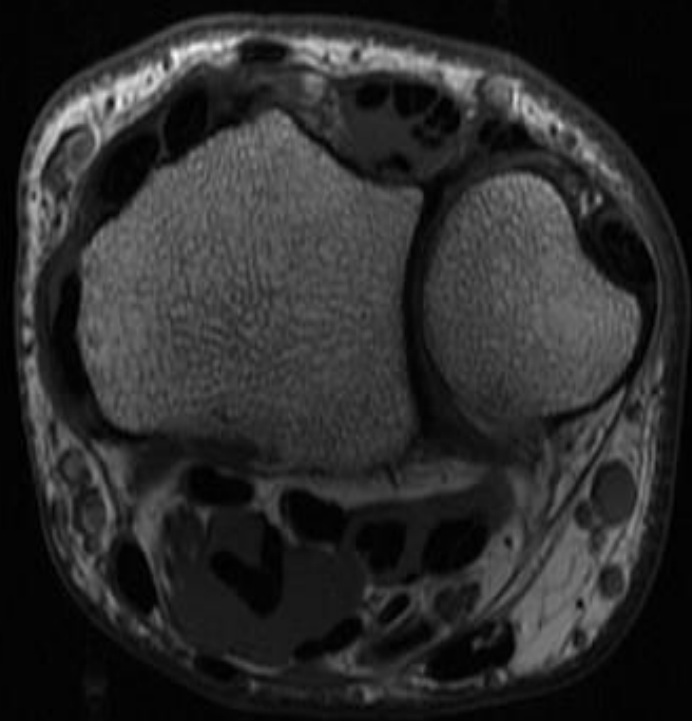


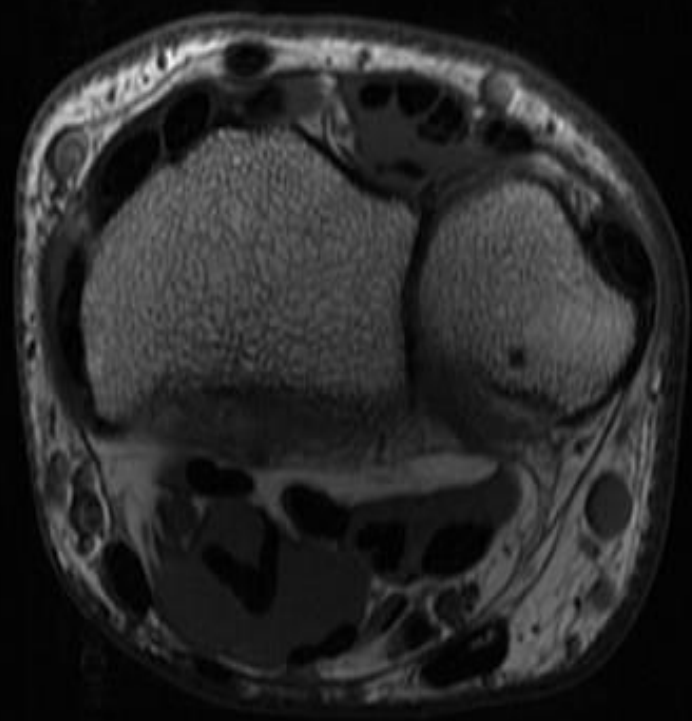


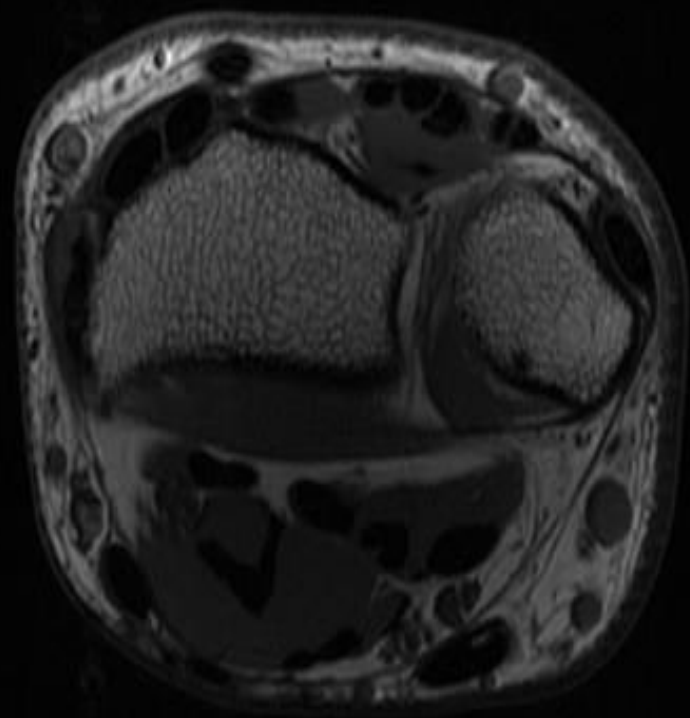


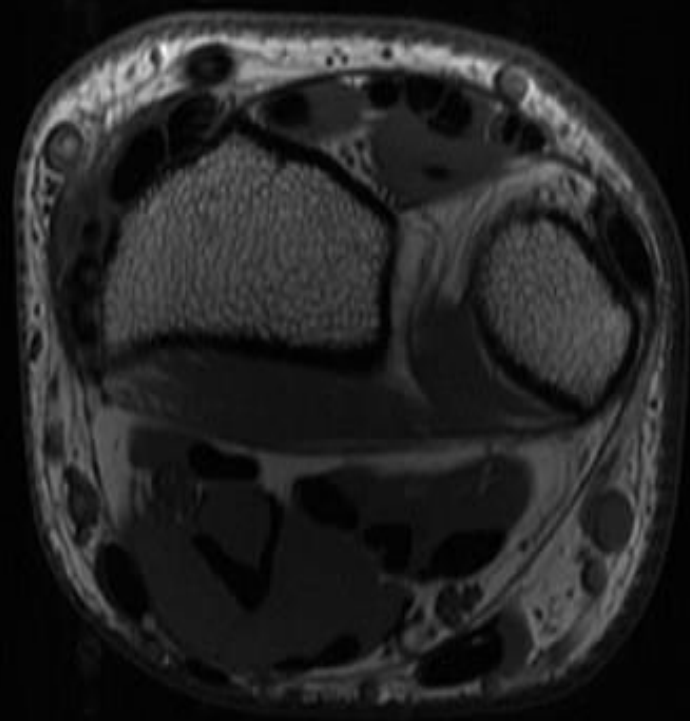


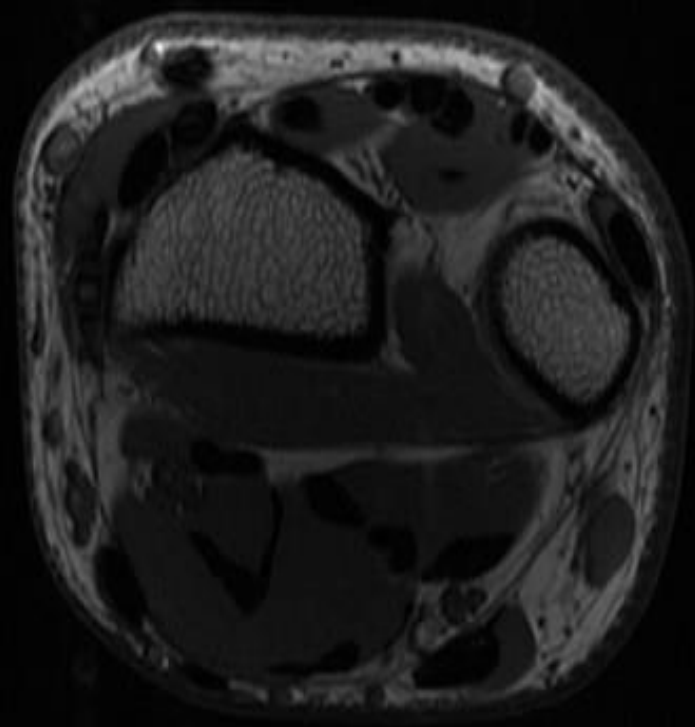


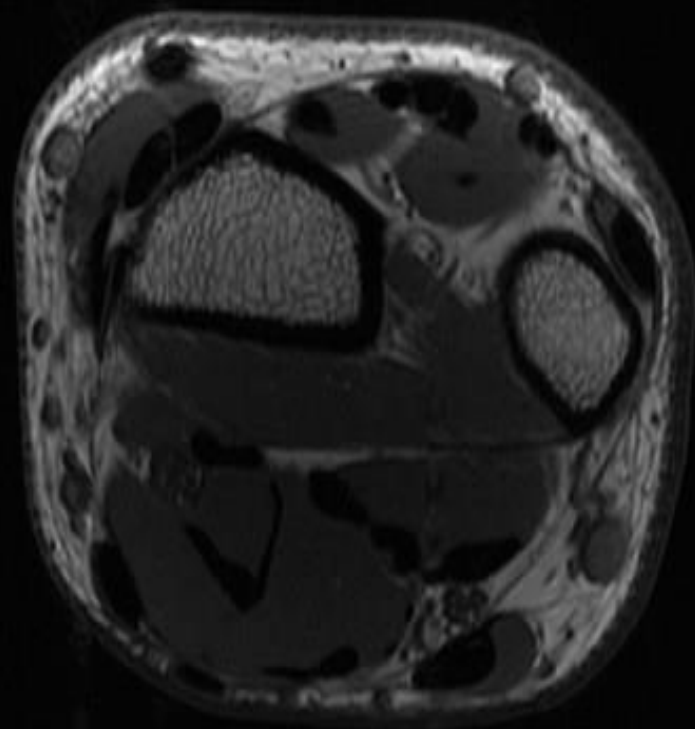


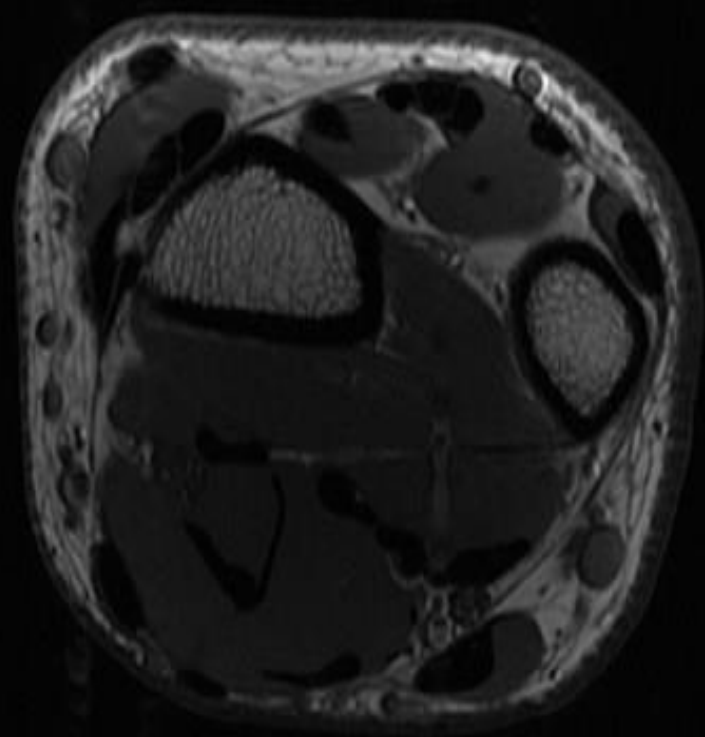


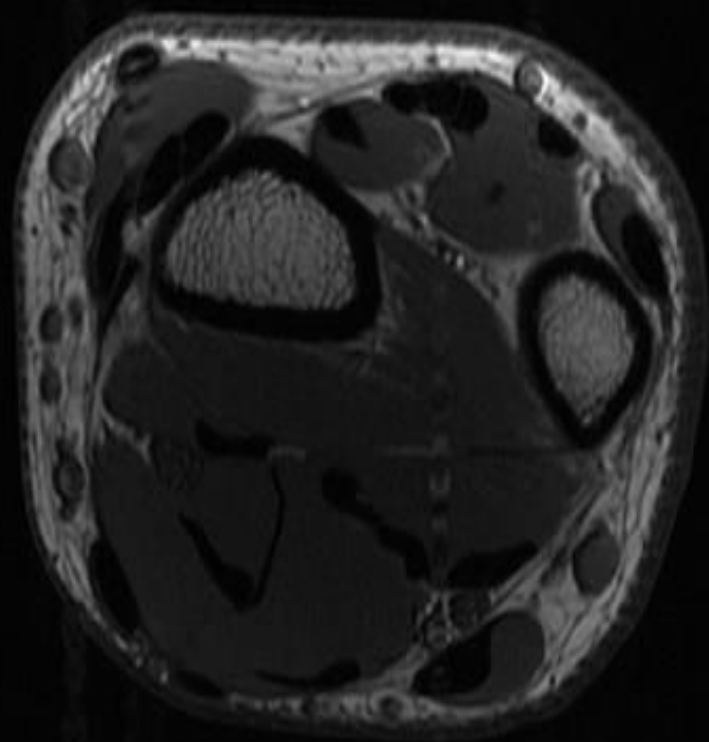


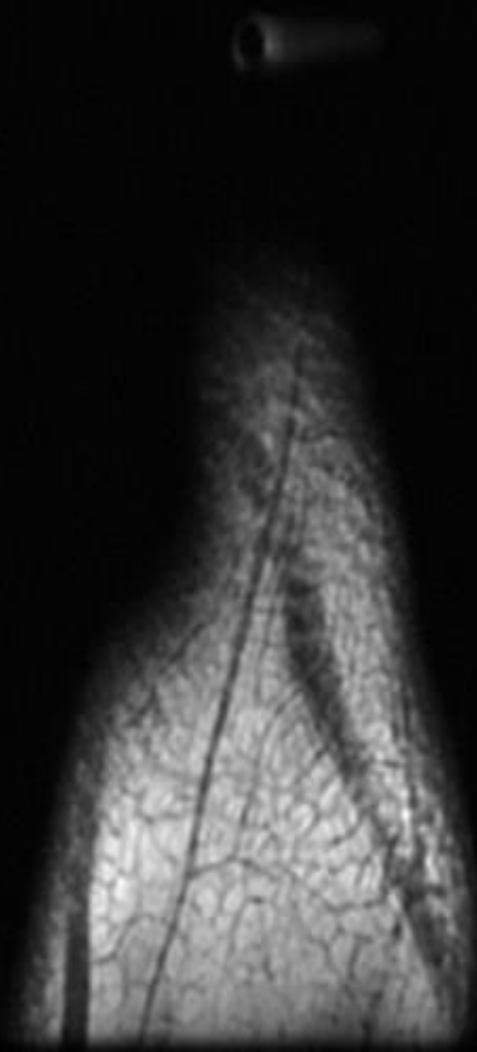


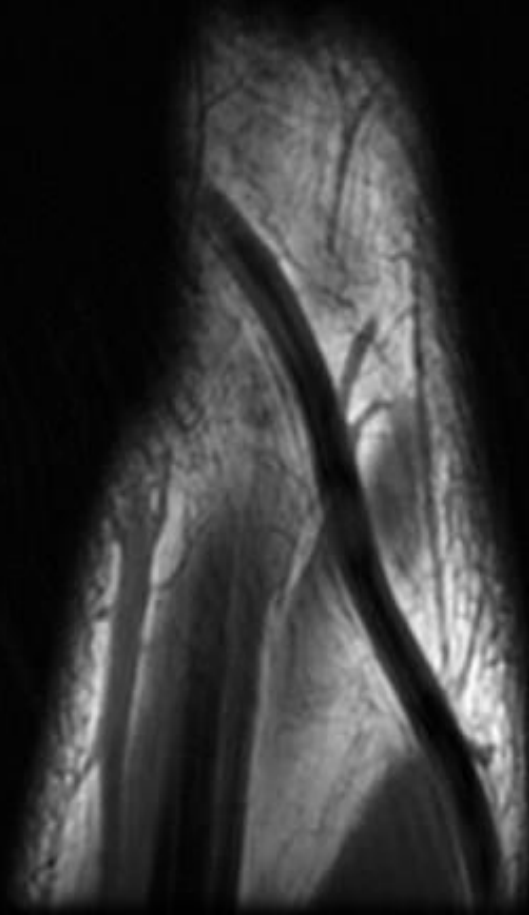


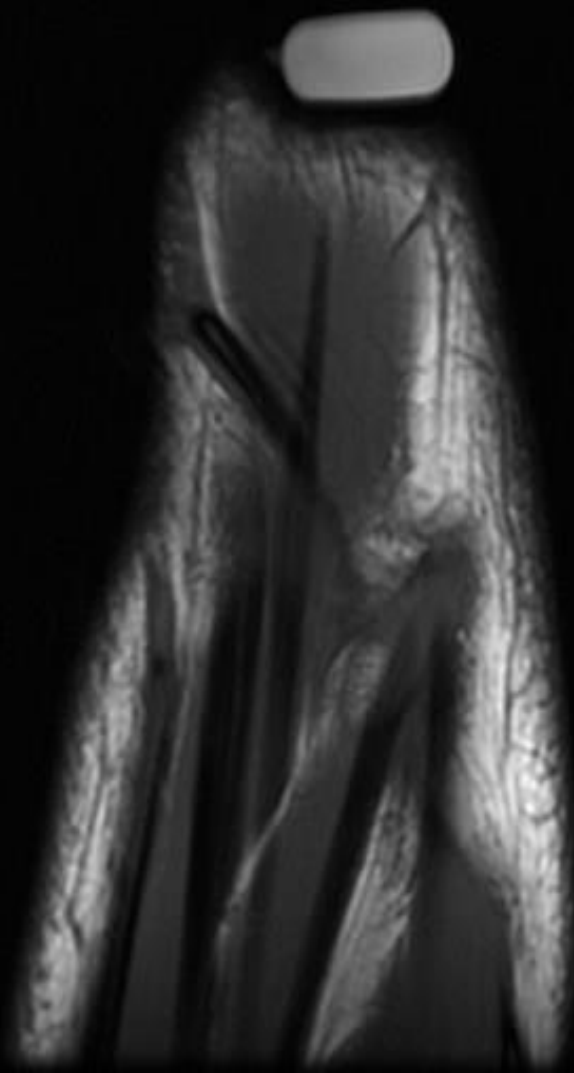


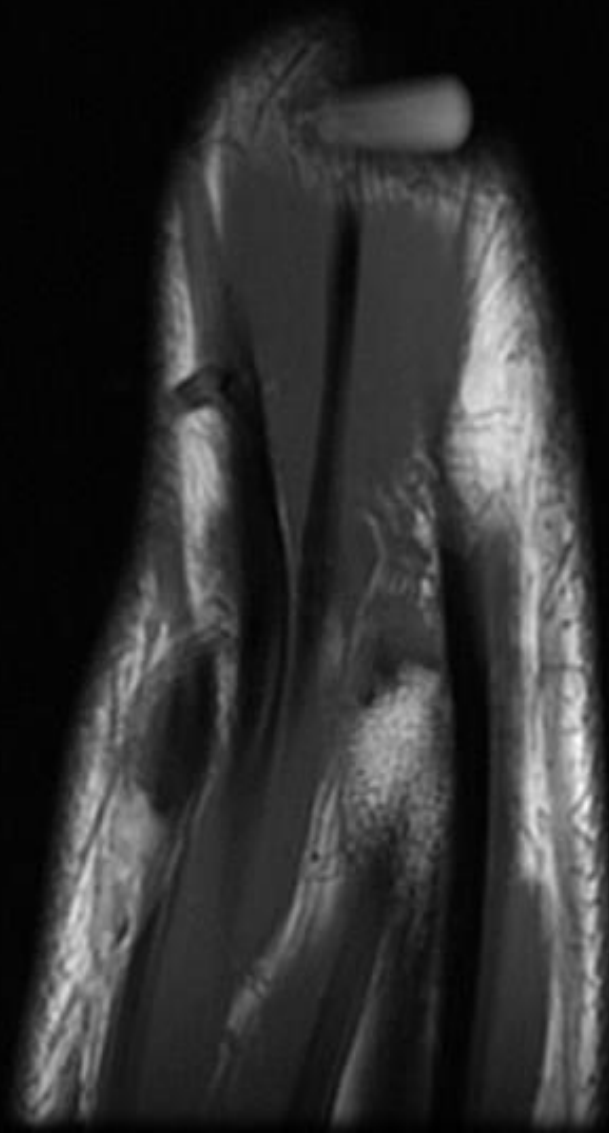


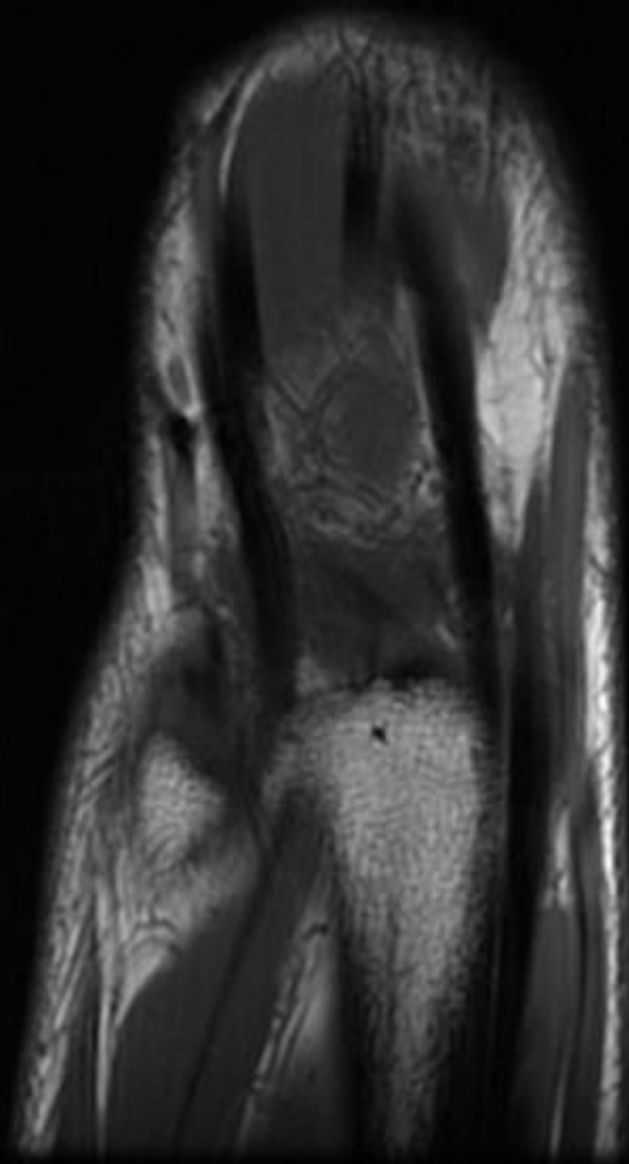








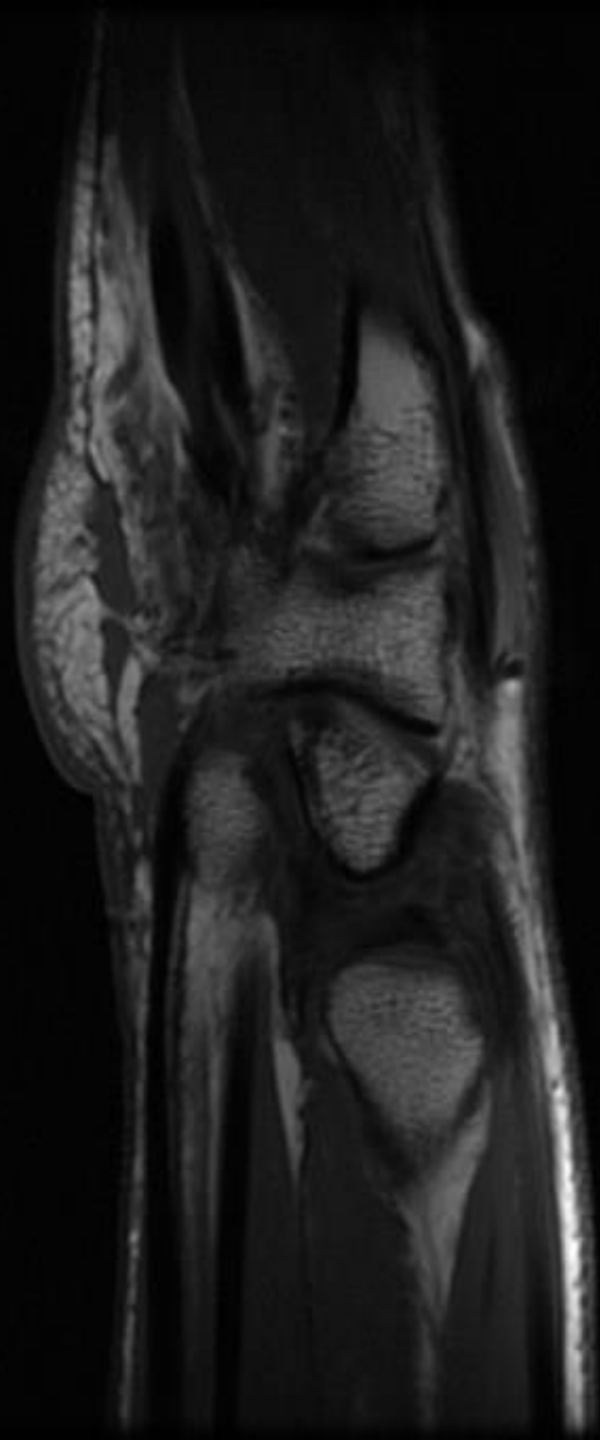


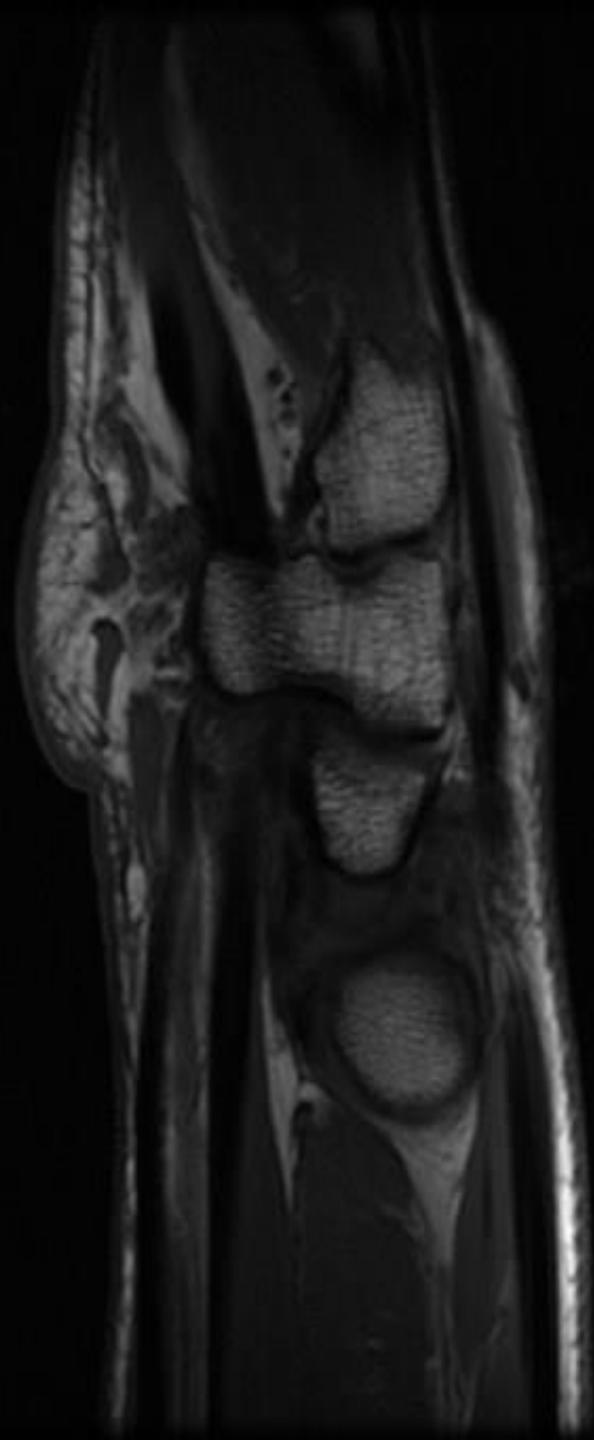


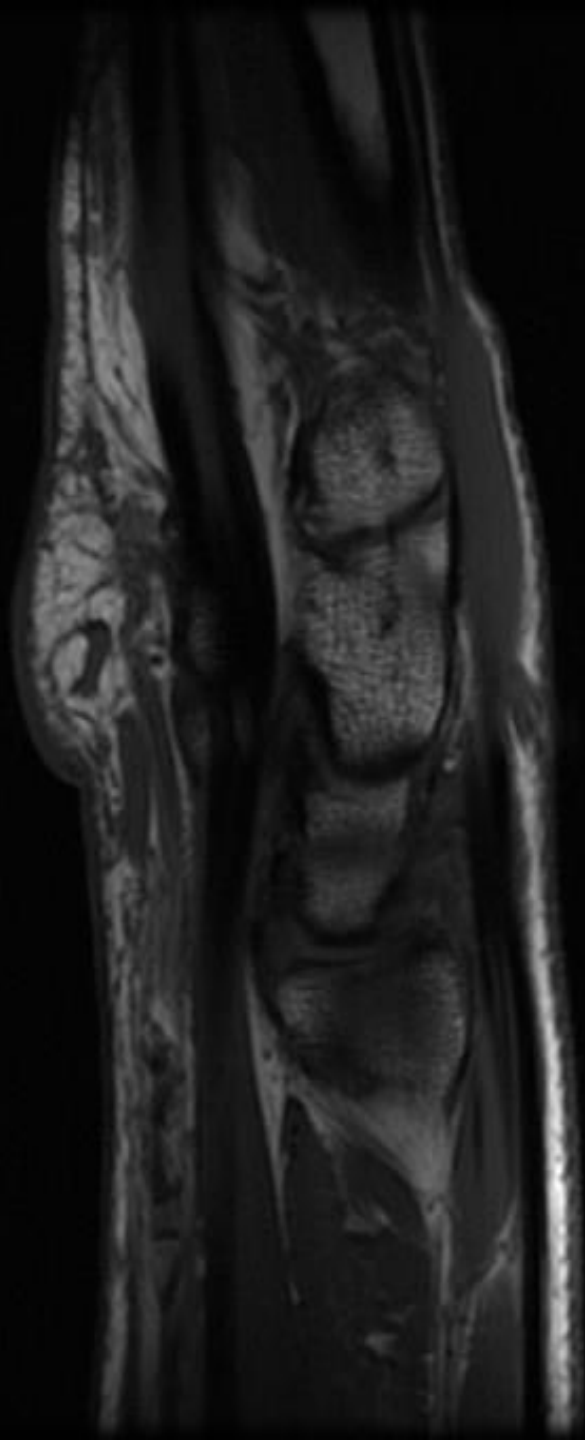


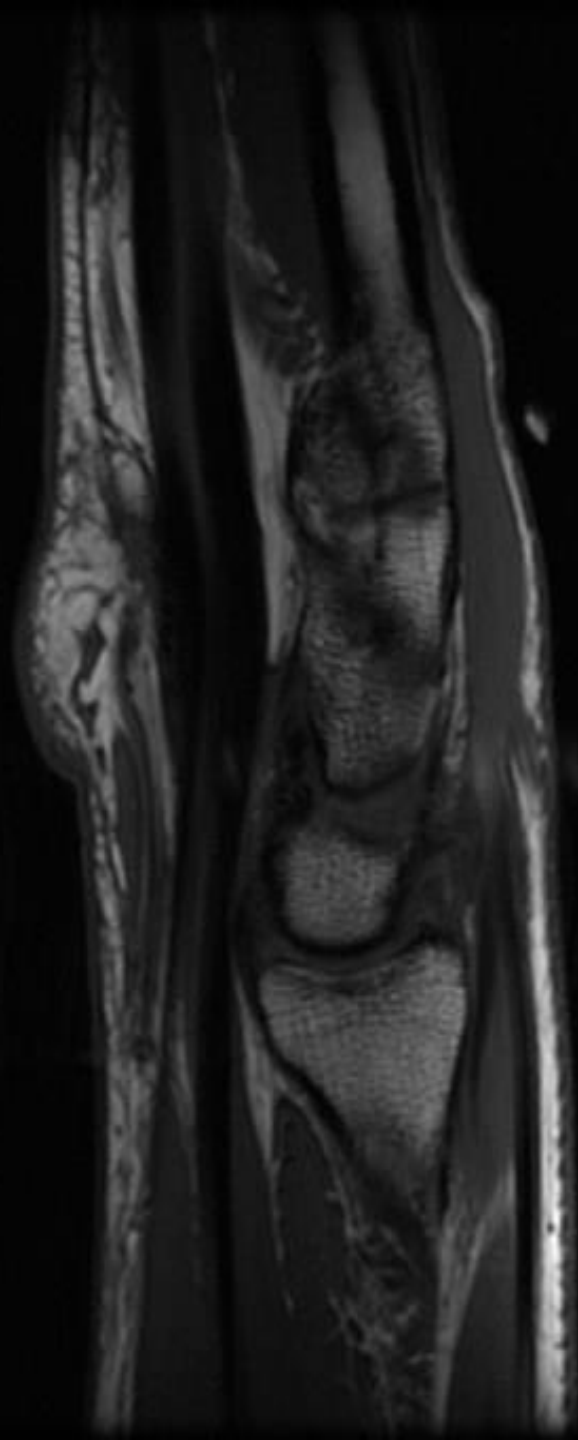


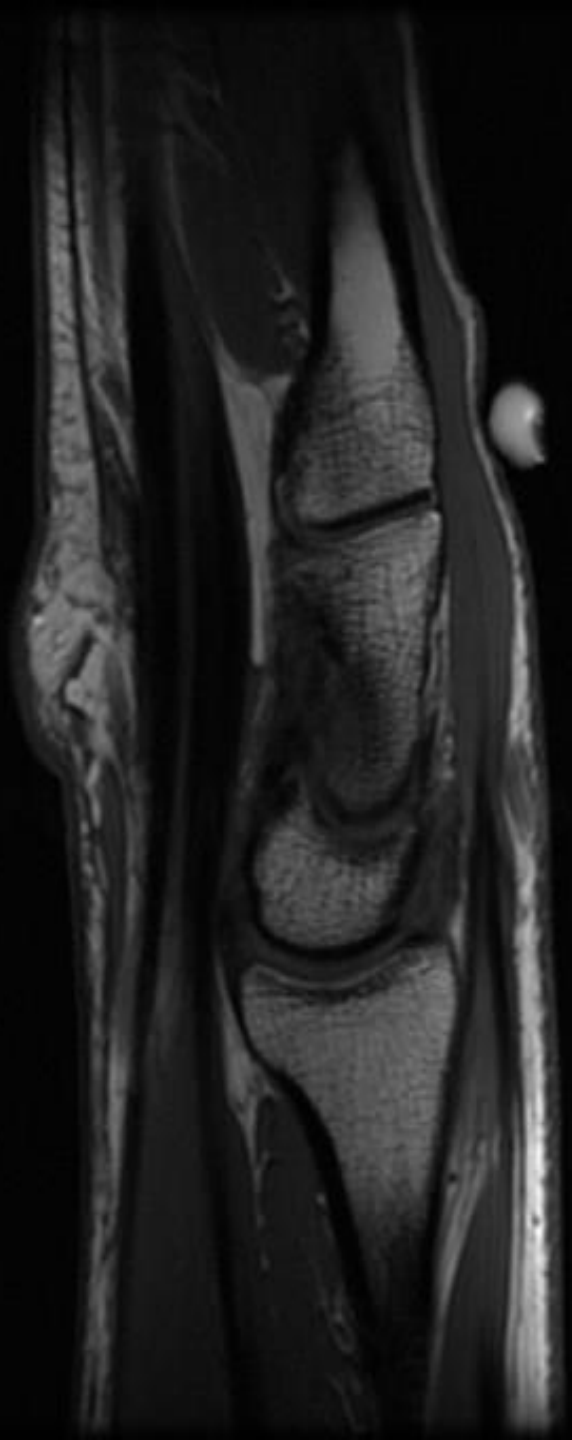


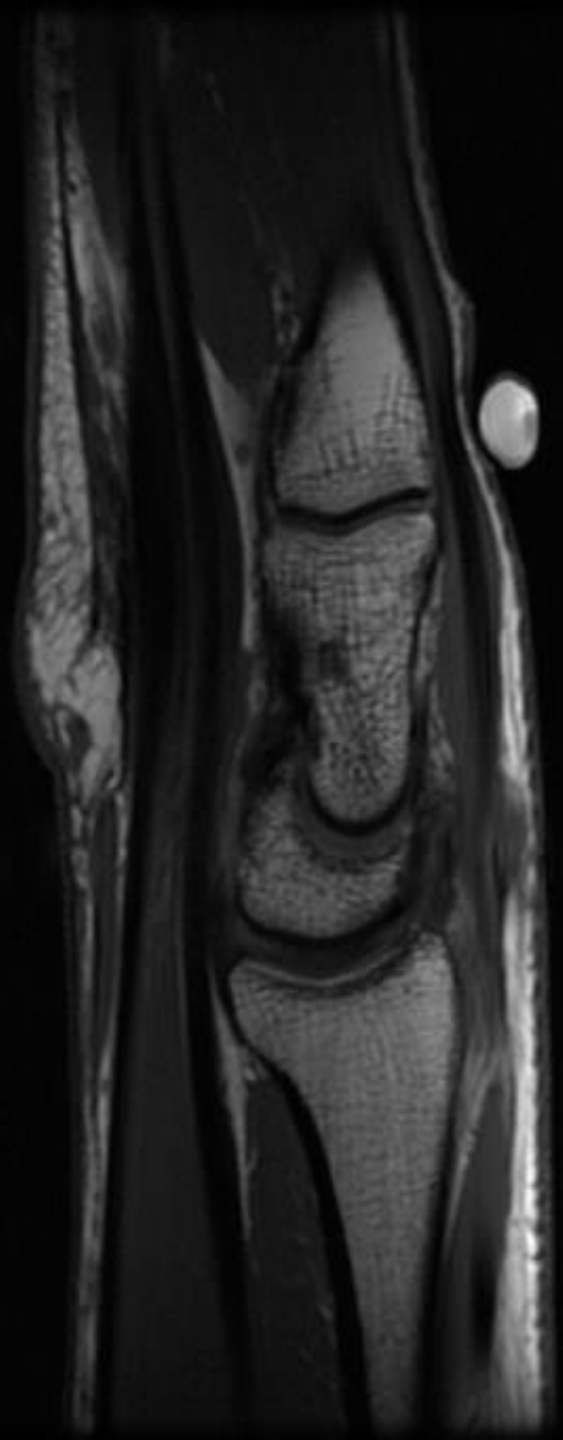


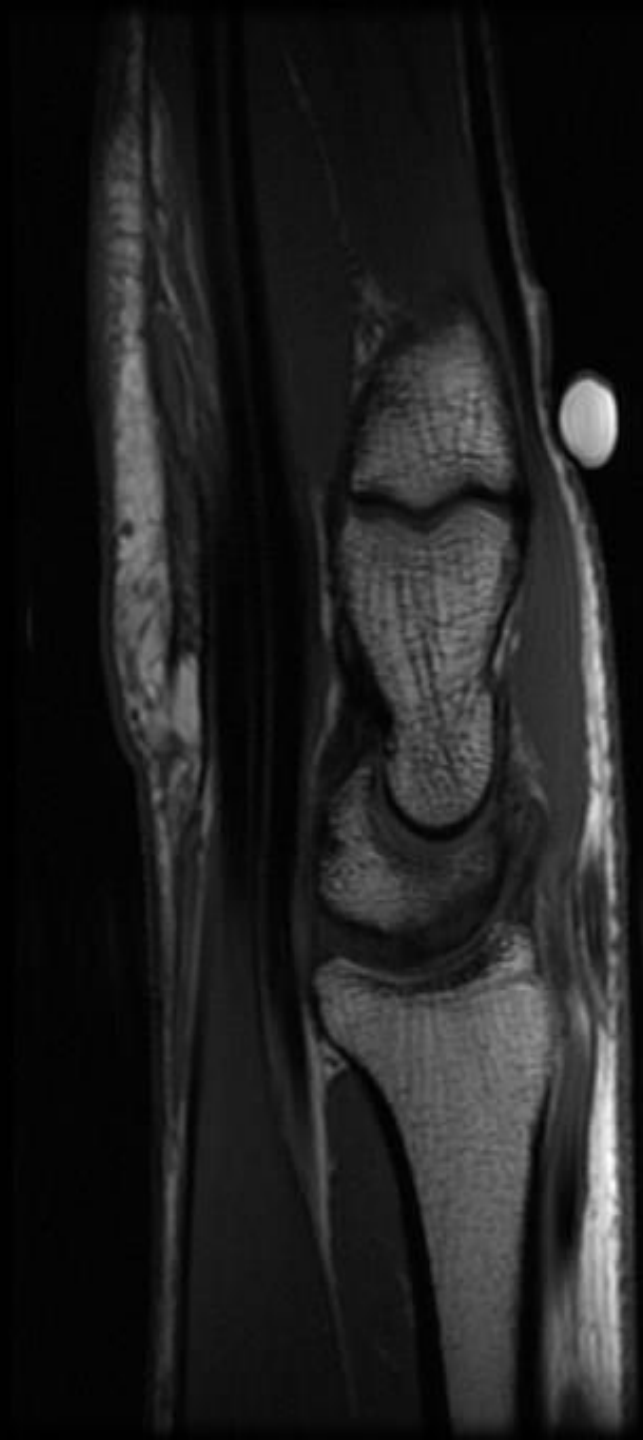


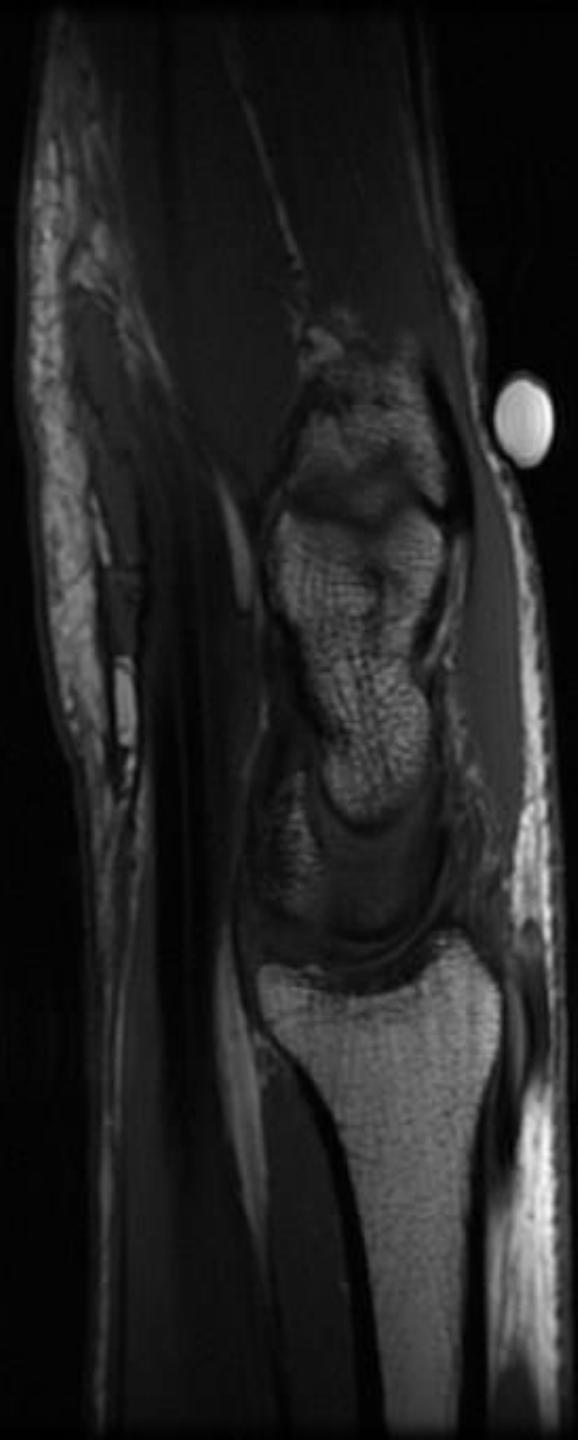


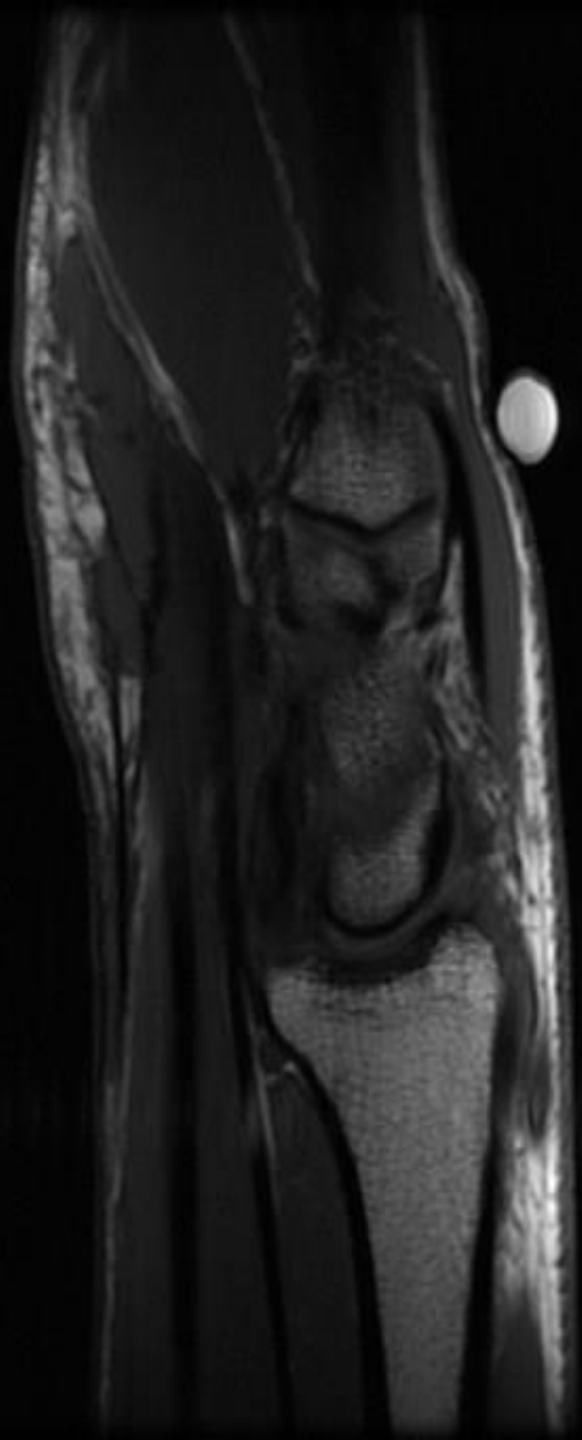


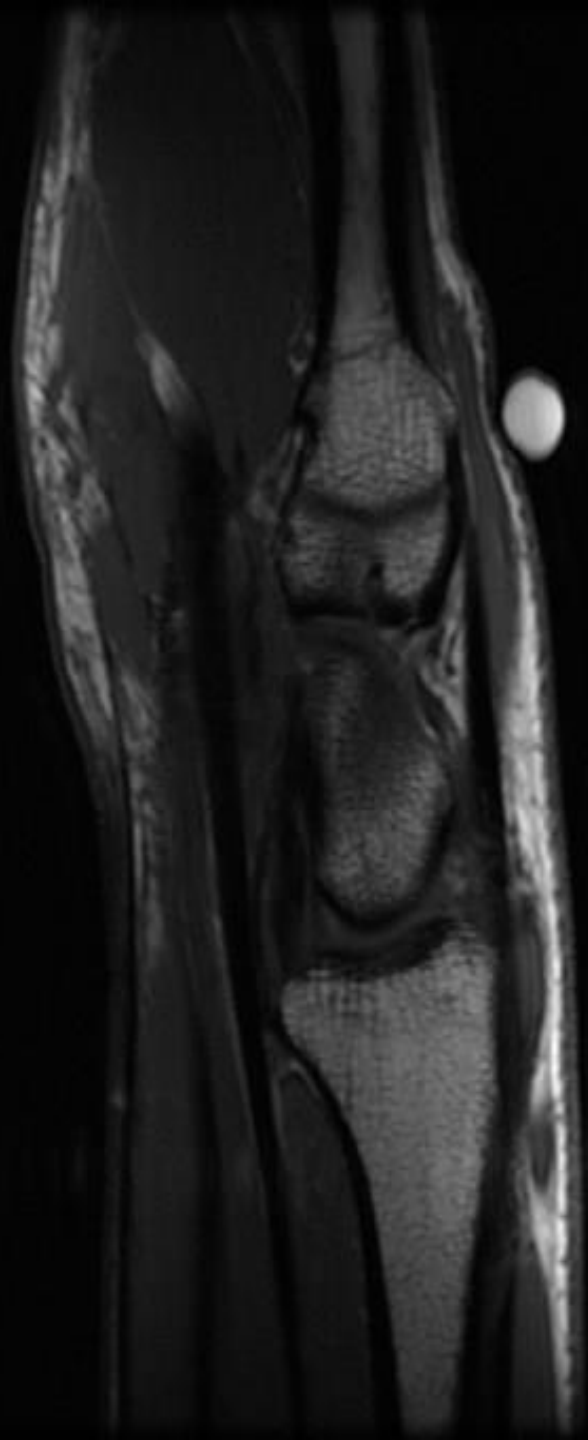


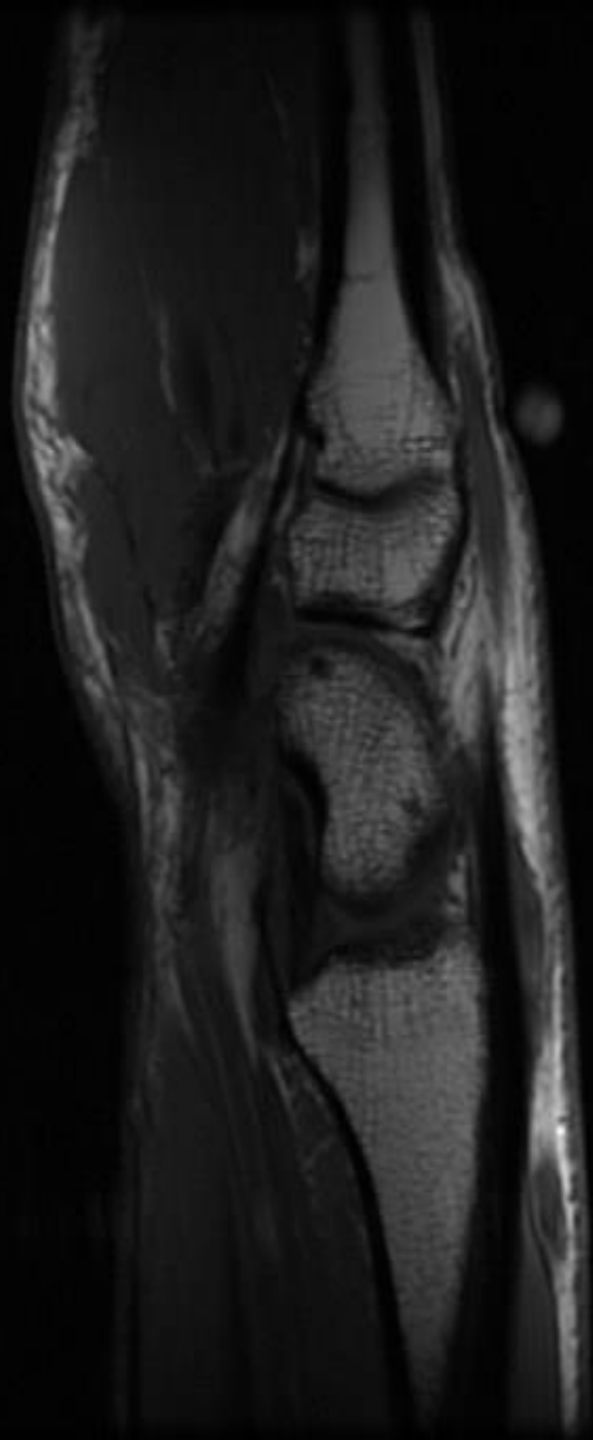


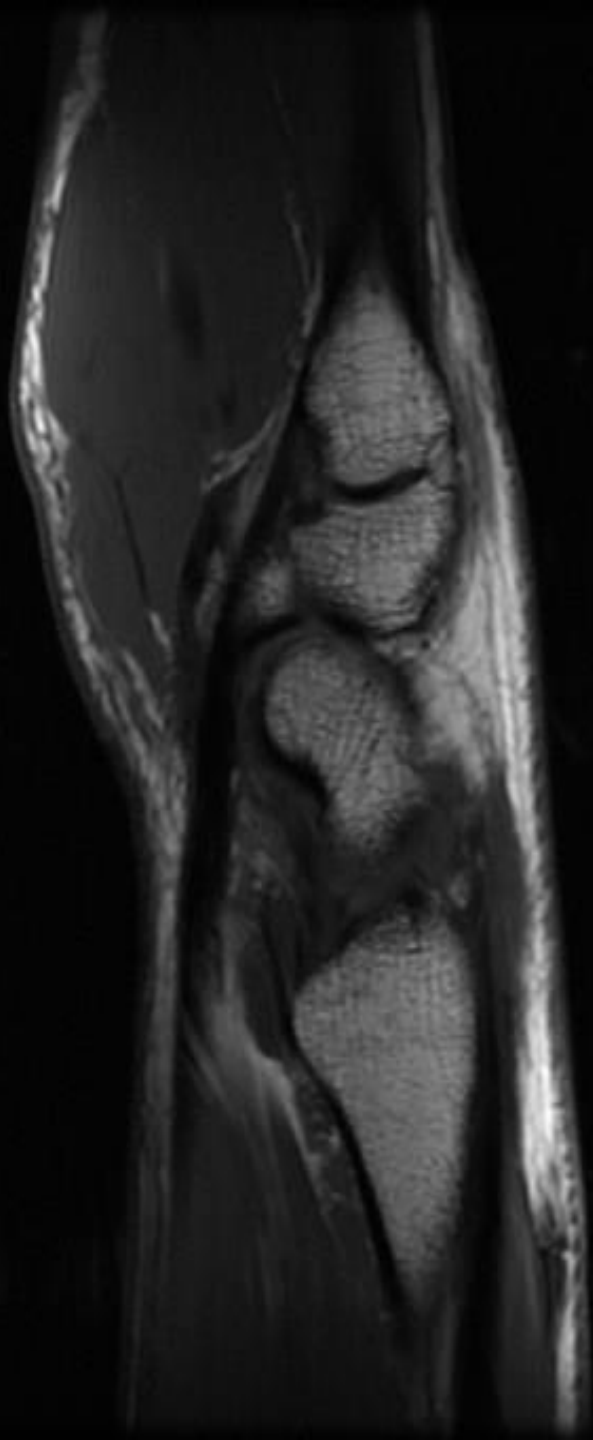


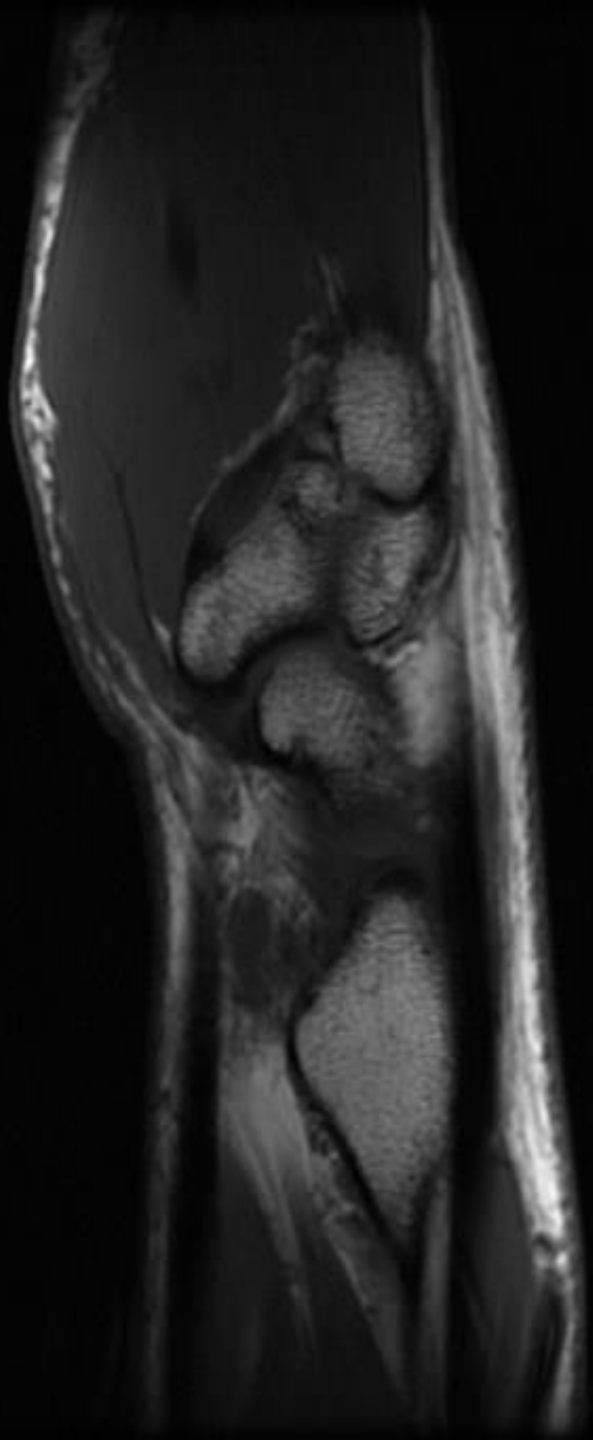






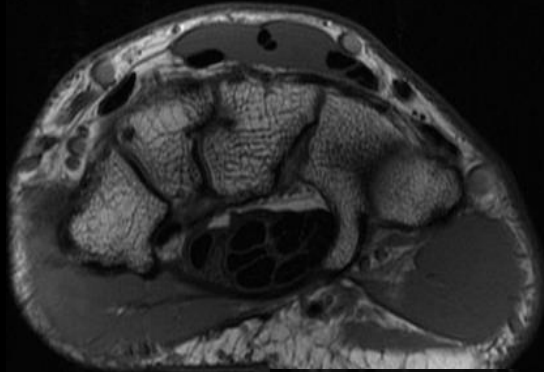




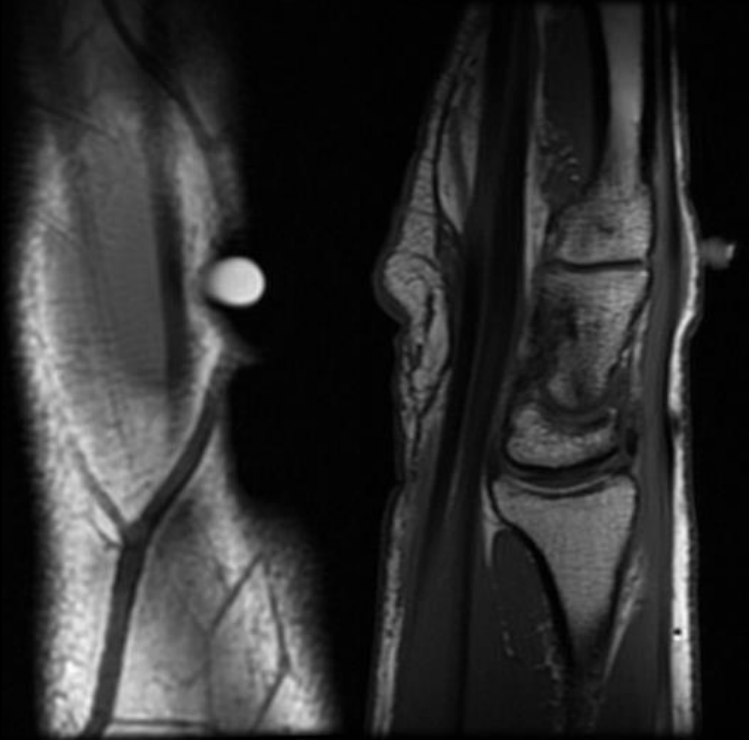
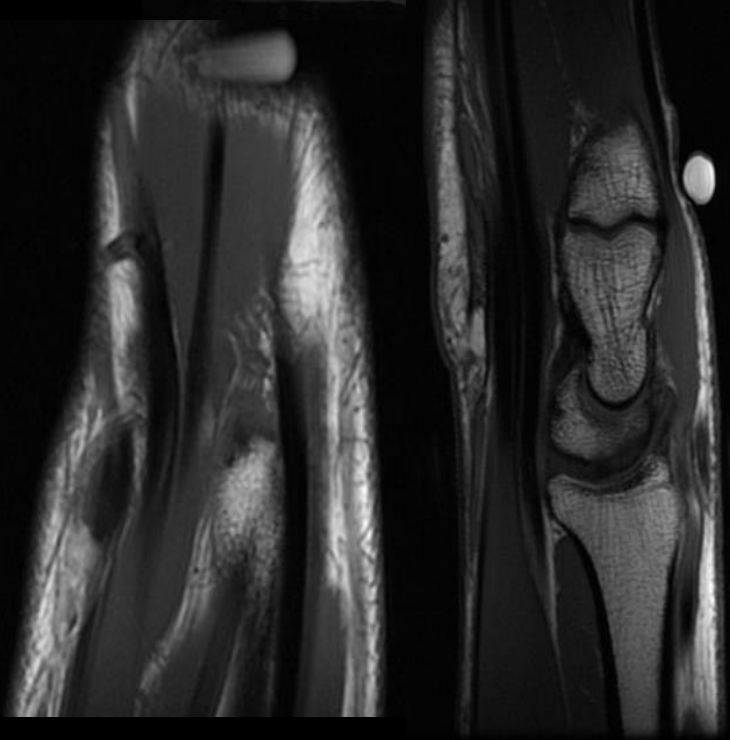
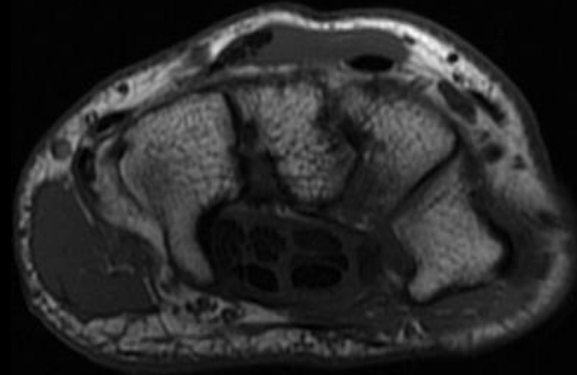


Imaging

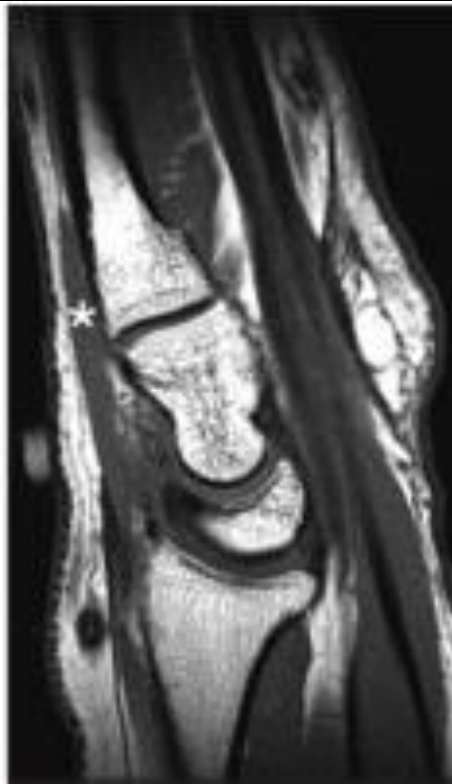
Right Hand



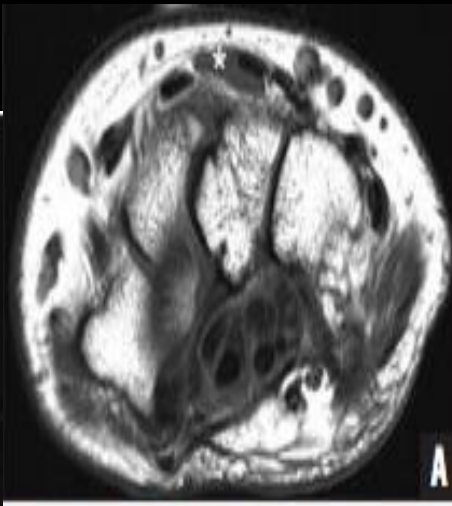
Left Hand



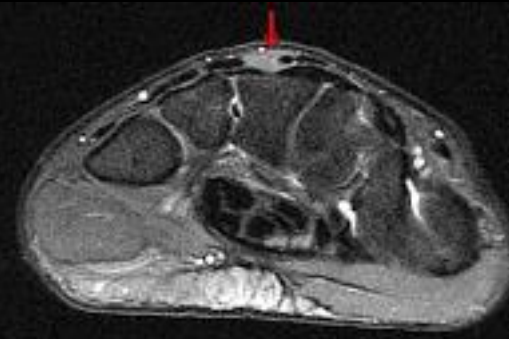
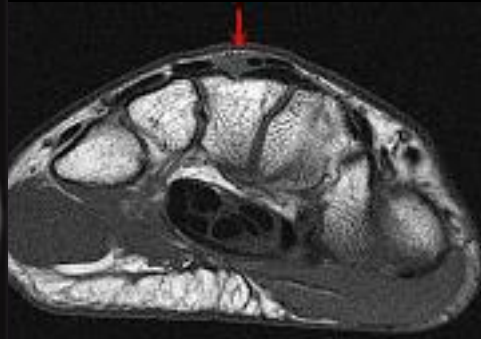
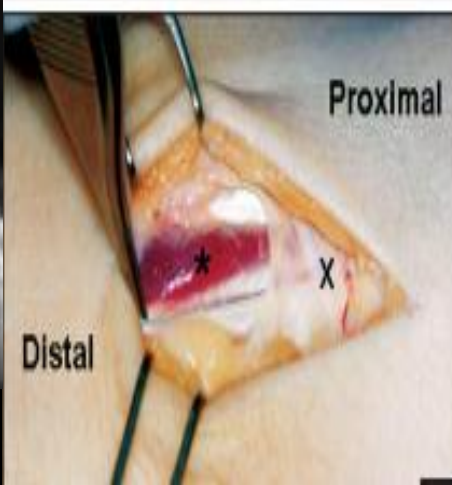
Companion Cases



Froelich



A



EDBM

MRI blogspot

Extensor digitorium brevis manus muscle

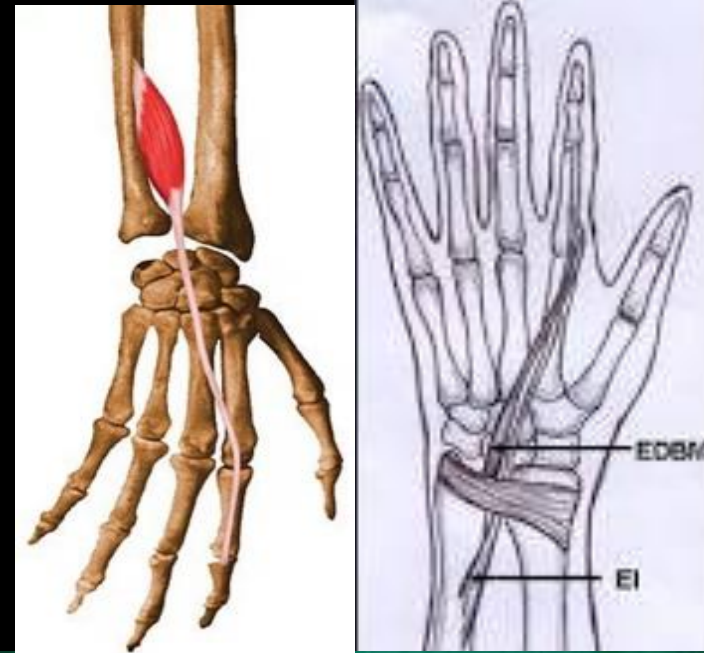
- *Albinus* – 1734
- Supernumerary muscle – 4th Ext cmpt.
- Prevalence – 1-4% population
- M=F
- 33% b/l
- Presentation
 - Usually asymptomatic, dorsal wrist mass
 - Pain with extension; mm hypertrophy; compression against ext retinaculum
- Prior to imaging confused for
 - Ganglion, synovial cyst/tumor, tenosynovitis, soft tissue tumor, carpal bossing, exostosis



Nakano

EDBM Anatomy

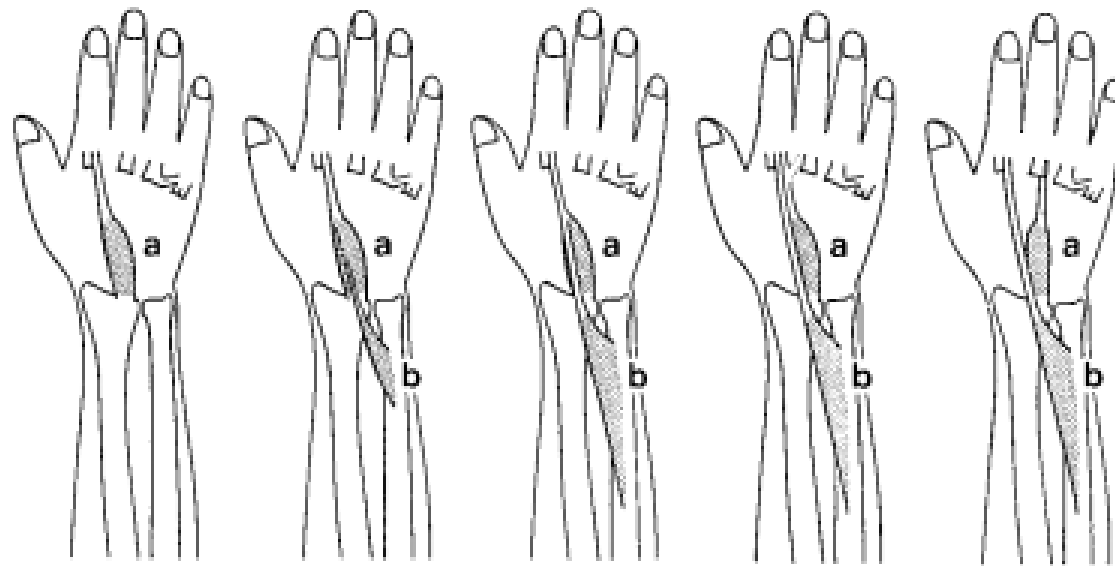
- Origin
 - Distal radius, dorsal radiocarpal lig., wrist-joint capsule, carpus(scaphoid/lunate)
- Insertion
 - Extensor hood of index, middle or ring fingers, or multiple
 - MC – 2nd > 3rd > 2nd + 3rd
- Blood/nerve supply
 - Post. Interosseous n/a



Ogura et al. Journal of Hand Surgery. Anatomic and clinical studies of the extensor digitorum brevis manus. 1987

559 wrist/hand specimens, 17 had EDBM

- 17 Gross specimens, 13 which were frozen
 - ORIGIN
 - Macroscopically - proximal portion of dorsal radiocarpal lig near lunate (17/17)
 - 2 cases muscle also arose from distal ulna
 - Microscopically – EDBM fibers attached to radius (9/13); EDBM merged into radiocarpal lig. And possibly reached radius (4/13)
 - Muscle Belly
 - Single belly in all cases , just distal to radiocarpal joint → midshafts of 2nd/3rd MC's.
 - Types I and IIA had larger muscle bellies



Type I **IIa** **IIb** **IIc** **III**

Fig. 1. Classification of the EDBM. *a*, EDBM, *b*, EIP.

Table II. Incidence of the EDBM by type in 17 hands

	Type					Total
	I	II			III	
		a	b	c		
No. of cases	4	3	2	3	5	17

Treatment

- Extensor retinacular release; usually requires EDBM excision

References

- Jacobina et al. Extensor digitorum brevis manus: a rare muscle on the dorsum of the hand. Braz. J. Morphol. Sci., 2007, vol 24. , no 4, p. 208-210
- Ogura et al. Anatomic and clinical studies of the extensor digitorum brevis manus. J of Hand Surgery. Vol 12A. No. 1. 1987
- Froelich et al. Bilateral Extensor digitorum manus. Orthopedics; 2012. 35(9).
- Nakano et al. A case of extensor digitorum brevis manus. Dermatol Online Journal. 2003; 9(5): 21.
- Ouellette et al. Using dynamic sonography to Diagnose Extensor digitorum brevis manus. AJR. 2003.; 181: 1224-1226.